

WAAS CH 58006 W12A	APP CRS 121°	Rwy Idg TDZE Apt Elev	7504 402 410
--	------------------------	-----------------------------	---

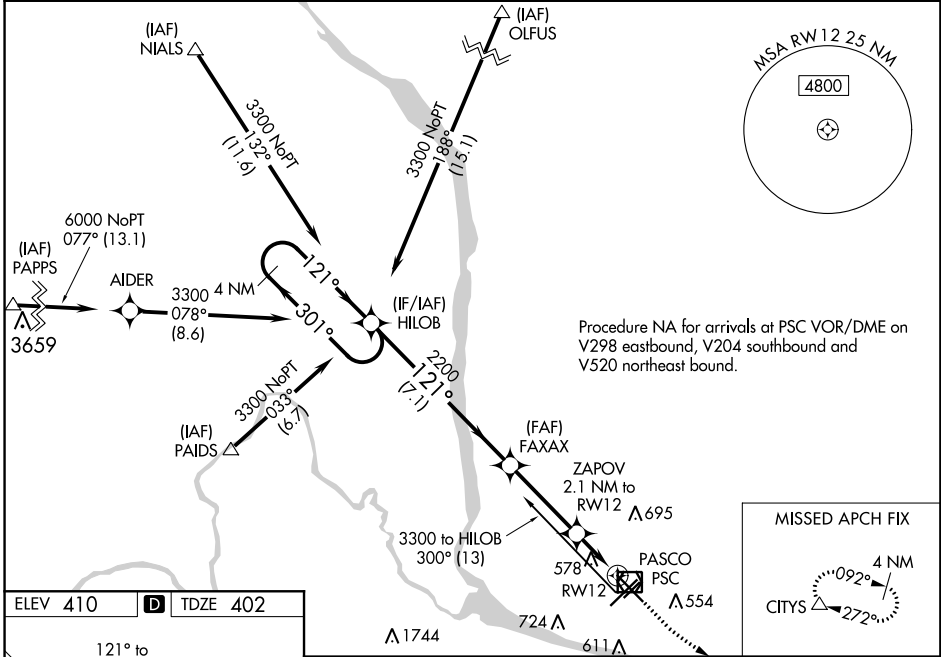
RNAV (GPS) Y RWY 12

TRI-CITIES (PSC)

⚠ Baro-VNAV NA when using Hermiston altimeter setting. For uncompensated Baro-VNAV systems, LNAV/VNAV NA below -14°C (7°F) or above 54°C (130°F). DME/DME RNP-0.3 NA. VDP NA with Hermiston altimeter setting. When local altimeter setting not received, use Hermiston altimeter setting; increase all DA 95 feet and all MDA 100 feet. Increase LPV all Cats visibilities 1/8 mile; LNAV/VNAV all Cats visibilities 3/8 mile; increase LNAV and Circling Cats C and D visibility 1/4 mile.

MISSED APPROACH:
Climb to 900 then climbing left turn to 3200 direct CITYS and hold.

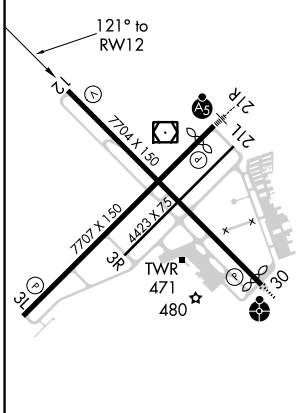
ATIS 125.65	CHINOOK APP CON* 128.75 377.2	TRI-CITIES TOWER* 135.3 (CTAF) 0 323.3	GND CON 121.8	CLNC DEL 120.0	UNICOM 122.95
-----------------------	---	--	-------------------------	--------------------------	-------------------------



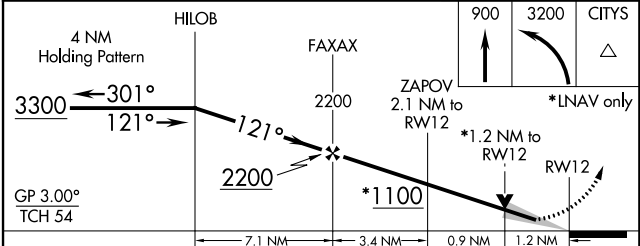
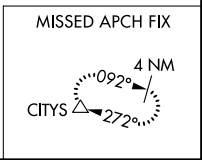
NW-1, 21 MAY 2020 to 18 JUN 2020

NW-1, 21 MAY 2020 to 18 JUN 2020

ELEV 410	D	TDZE 402
----------	----------	----------



REIL Rwy 3L and 12
MIRL Rwy 12-30
HIRL Rwy 3L-21R



CATEGORY	A	B	C	D
LPV DA		602-3/4	200 (200-3/4)	
LNAV/VNAV DA		755-1 1/8	353 (400-1 1/8)	
LNAV MDA	840-1	438 (500-1)	840-1 3/8	438 (500-1 3/8)
C CIRCLING	880-1 470 (500-1)	940-1 530 (600-1)	1040-1 3/4 630 (700-1 3/4)	1100-2 1/4 690 (700-2 1/4)