

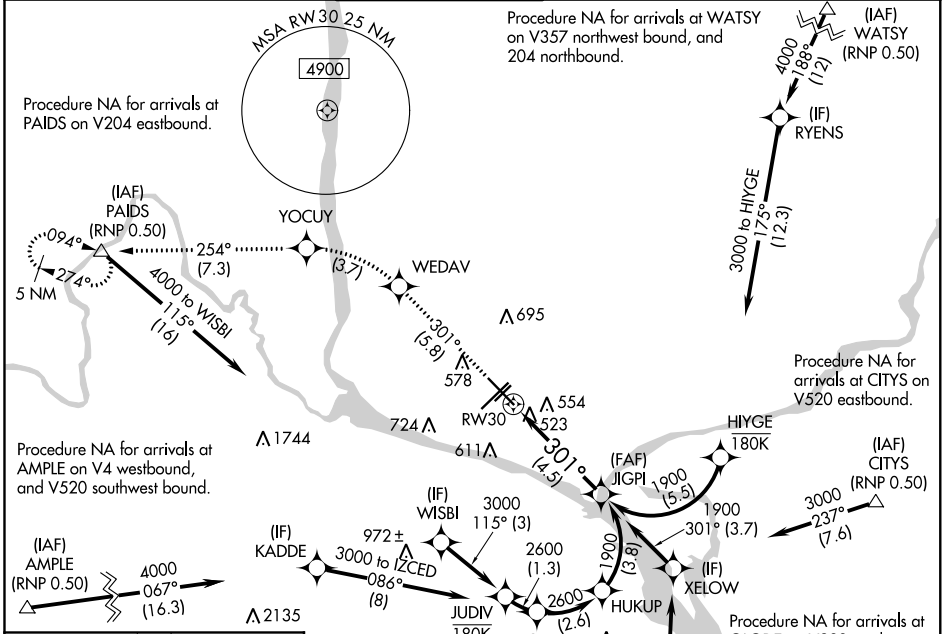
# RNAV (RNP) Z RWY 30 TRI-CITIES (PSC)

APP CRS <b>301°</b>	Rwy Idg <b>7504</b>
	TDZE <b>405</b>
	Apt Elev <b>410</b>

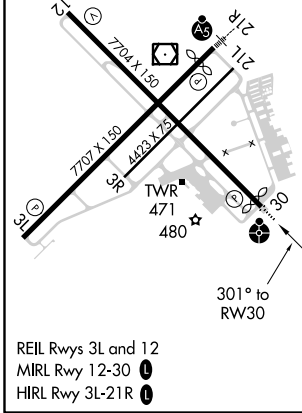
**▼** For uncompensated Baro-VNAV systems, procedure NA below -14°C (7°F) or above 54°C (130°F). RF required. GPS required. For inoperative ODALS, increase RNP 0.11 visibility all Cats to 1¼ mile, and increase RNP 0.30 visibility all Cats to 1½ mile.



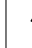
**ODALS**  
 MISSED APPROACH: Climb to 5200 on track 301° to WEDAV, left turn to YOUCY, and on track 254° to PAIDS and hold.

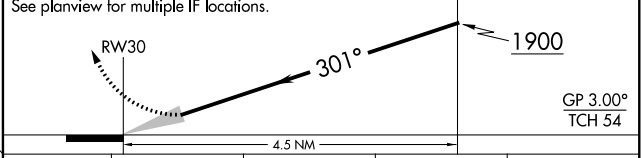
ATIS <b>125.65</b>	CHINOOK APP CON* <b>128.75 377.2</b>	TRI-CITIES TOWER* <b>135.3 (CTAF) 0 323.3</b>	GND CON <b>121.8</b>	CLNC DEL <b>120.0</b>	UNICOM <b>122.95</b>
-----------------------	---	--	-------------------------	--------------------------	-------------------------



ELEV 410	<b>D</b>	TDZE 405
----------	----------	----------



5200	WEDAV	YOUCY	tr 254°	PAIDS	JIGPI
tr 301°					1900



CATEGORY	A	B	C	D
RNP 0.11 DA		778-1⅛	373 (400-1⅛)	
RNP 0.30 DA		834-1¼	429 (500-1¼)	

### AUTHORIZATION REQUIRED

NW-1, 21 MAY 2020 to 18 JUN 2020

NW-1, 21 MAY 2020 to 18 JUN 2020