

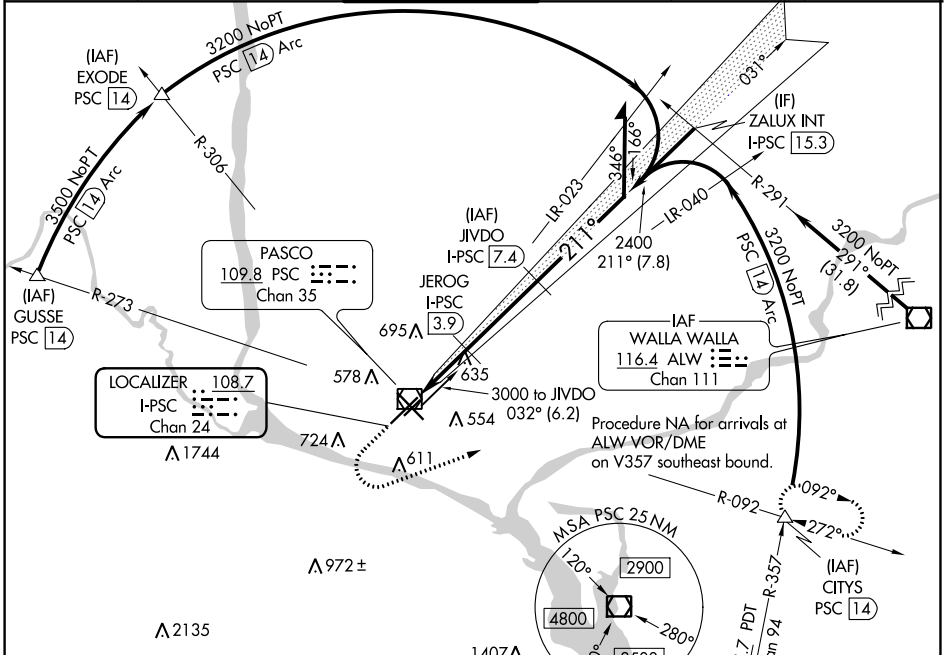
LOC/DME I-PSC <b>108.7</b> Chan 24	APP CRS <b>211°</b>	Rwy Idg TDZE Apt Elev	<b>7110</b> <b>404</b> <b>410</b>
--	------------------------	-----------------------------	---

# ILS or LOC RWY 21R

TRI-CITIES (PSC)

DME required for LOC only.		MALS R		MISSED APPROACH: Climb to 1200 then climbing left turn to 3200 on heading 050° and PSC VOR/DME R-092 to CITYS INT/PSC VOR/DME 1.4 DME and hold.	
<p>▼ VDP NA when using Hermiston altimeter setting. When local altimeter setting not received, use Hermiston altimeter setting and increase all DA 95 feet and all MDA 100 feet; increase</p> <p>▲ S-LOC 21R Cat C and D visibility 3/8 mile and Circling Cat C and D visibility 1/4 mile.</p> <p>For inop ALS when using Hermiston altimeter setting, increase S-ILS 21R all Cats visibility to RVR 4500, increase S-LOC 21R Cats C and D visibility to 1 1/4 SM.</p> <p>#RVR 1800 authorized with use of FD or AP or HUD to DA (NA when using Hermiston altimeter setting).</p>					

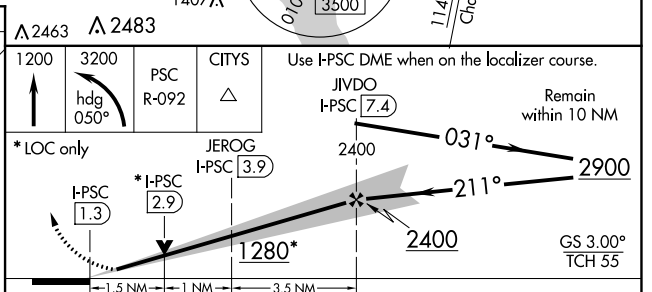
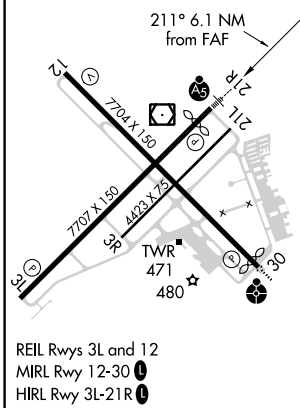
ATIS <b>125.65</b>	CHINOOK APP CON * <b>128.75 377.2</b>	TRI-CITIES TOWER * <b>135.3 (CTAF) 323.3</b>	GND CON <b>121.8</b>	CLNC DEL <b>120.0</b>	UNICOM <b>122.95</b>
-----------------------	--	---	-------------------------	--------------------------	-------------------------



NW-1, 21 MAY 2020 to 18 JUN 2020

NW-1, 21 MAY 2020 to 18 JUN 2020

ELEV 410	<b>D</b>	TDZE 404
----------	----------	----------



CATEGORY	A	B	C	D
S-ILS 21R	#604/24 200 (200-1/2)			
S-LOC 21R	940/24	536 (600-1/2)	940/55	536 (600-1)
<b>C</b> CIRCLING	940-1	530 (600-1)	1040-1 3/4 630 (700-1 1/4)	1100-2 1/4 690 (700-2 1/4)