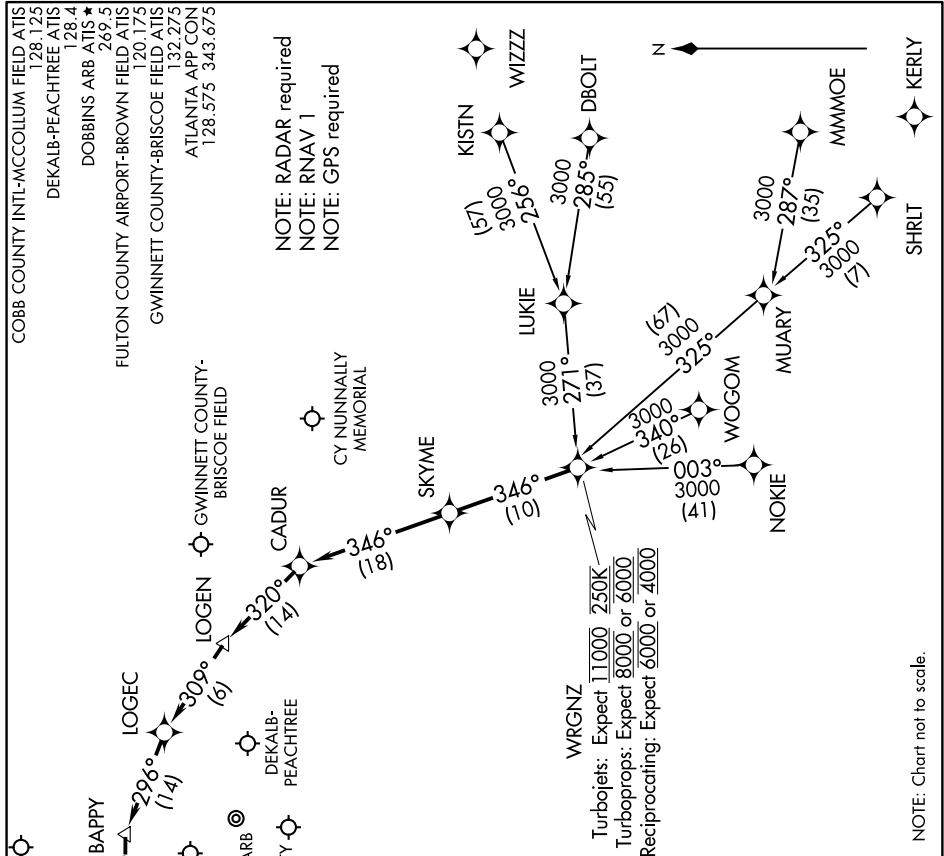


WRGNZ TWO ARRIVAL (RNAV)

ATLANTA, GEORGIA

SE-4, 21 MAY 2020 to 18 JUN 2020



ARRIVAL ROUTE DESCRIPTION

DBOLT TRANSITION (DBOLT.WRGNZ2)
 KISTN TRANSITION (KISTN.WRGNZ2)
 LUKIE TRANSITION (LUKIE.WRGNZ2)
 MMMOE TRANSITION (MMM OE.WRGNZ2)
 NOKIE TRANSITION (NOKIE.WRGNZ2)
 SHRLT TRANSITION (SHRLT.WRGNZ2)
 WOGOM TRANSITION (WOGOM.WRGNZ2)

From WRGNZ on track 346° to SKYME, then on track 346° to CADUR, then on track 320° to LOGEN, then on track 309° to LOGEC, then on track 296° to BAPPY, then on track 275° to DECLIN, then on track 275°. Expect RADAR vectors to final approach course.

LOST COMMUNICATIONS: Cross WRGNZ at or below 11000, cross CADUR at or below 7000, cross DECLIN at 4000; after DECLIN proceed direct to desired approach IAF for filed airport.

NOTE: Chart not to scale.

SE-4, 21 MAY 2020 to 18 JUN 2020

WRGNZ TWO ARRIVAL (RNAV)

ATLANTA, GEORGIA