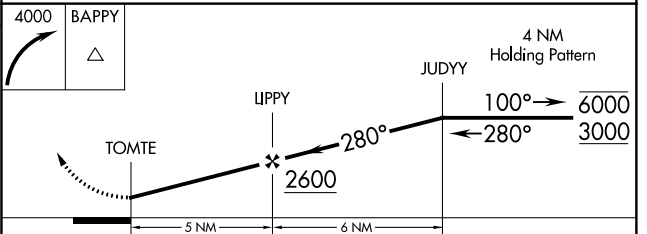
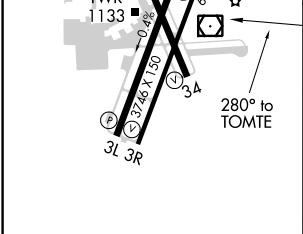
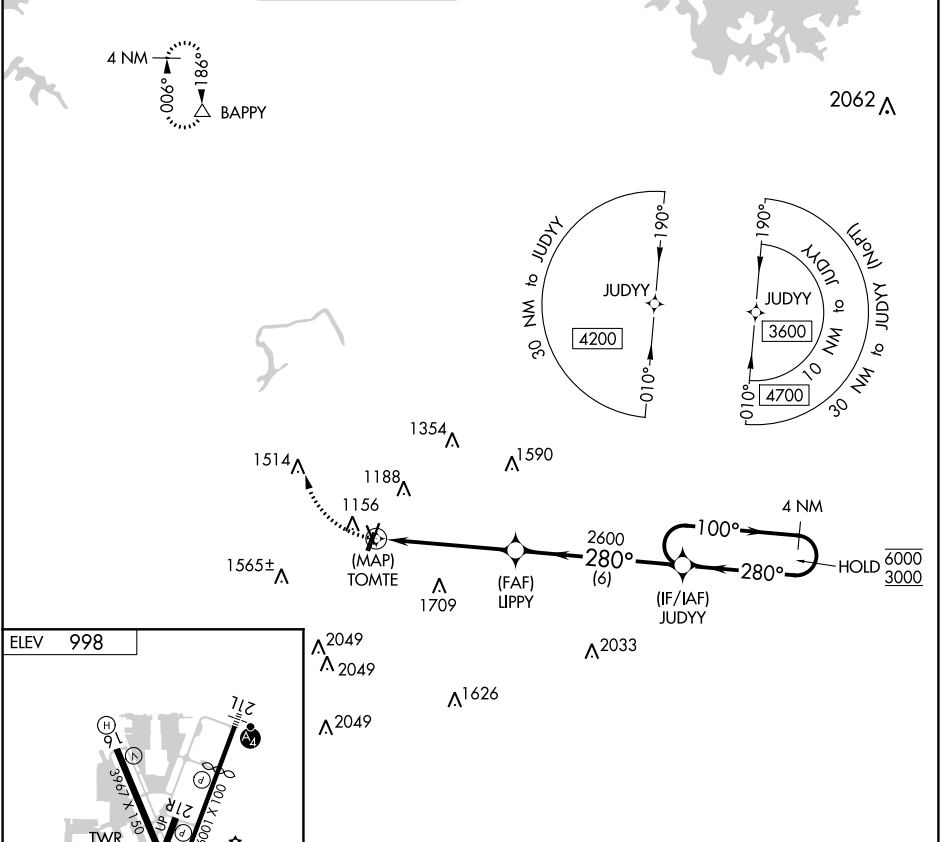


APP CRS	Rwy Idg	N/A
280°	TDZE	N/A
	Apt Elev	998

RNAV (GPS)-A

DEKALB-PEACHTREE (PDK)

RNP APCH.		MISSED APPROACH: Climbing right turn to 4000 direct BAPPY and hold.							
Circling to Rwy 3L, 16, 21R NA at night.		ATIS	ATLANTA APP CON	PEACHTREE TOWER ★	GND CON	CLNC DEL	CLNC DEL	UNICOM	120.0
128.4	126,975 239,275	120.9 (CTAF) 281.5	121.6	125.2	120.9 <small>(when twr closed)</small>	122.95			



HIRL Rwy 3R-21L MIRL Rws 16-34 and 3L-21R REL Rws 3R and 34	ELEV	998		
	CATEGORY C CIRCLING	A 1580-1	B 582 (600-1)	C 1840-2½ 842 (900-2½)

SE-4, 21 MAY 2020 to 18 JUN 2020

SE-4, 21 MAY 2020 to 18 JUN 2020