

LOC I-PDK 111.1	APP CRS 206°	Rwy Idg TDZE Apt Elev	5001 991 998
---------------------------	------------------------	-----------------------------	---

ILS or LOC RWY 21L

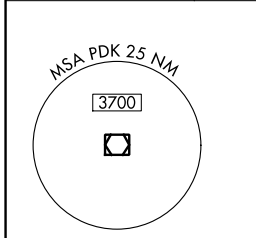
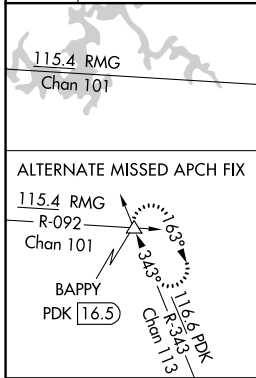
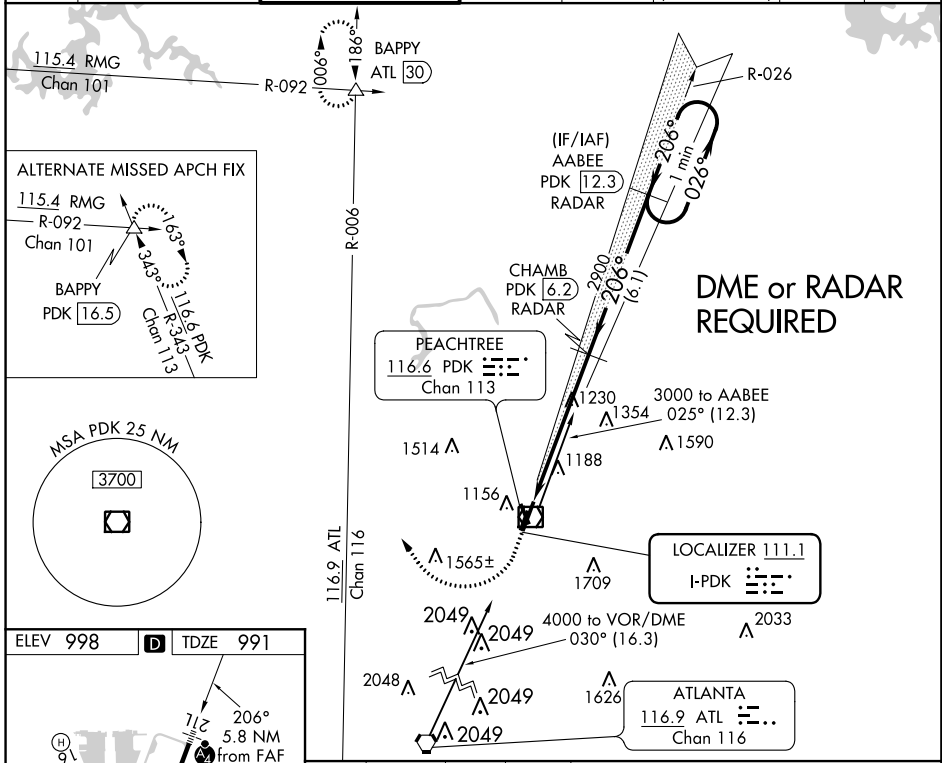
DEKALB-PEACHTREE (PDK)

▼ Night landing: Rwy 3L, 16 NA. Helicopter visibility reduction below 3/4 SM NA. When local altimeter setting not received, use Fulton County Airport-Brown Field altimeter setting and increase S-ILS 21L DA to 1378 and all MDA 60 feet; increase S-ILS 21L all Cats visibility 1/8 mile, increase S-LOC 21L Cats C/D and Circling Cat C visibility 1/4 mile.

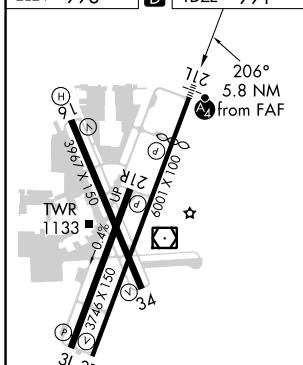
MALSF

MISSED APPROACH: Climb to 1600 then climbing right turn to 4000 on heading 330° and ATL VORTAC R-006 to BAPPY INT/ATL 30 DME and hold.

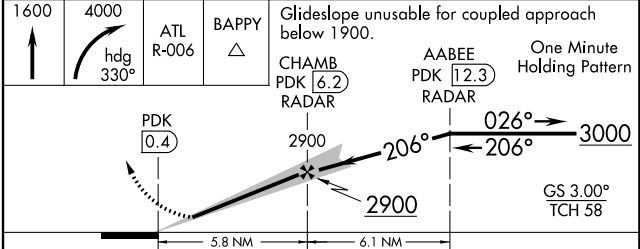
ATIS 128.4	ATLANTA APP CON 126.975 239.275	PEACHTREE TOWER ★ 120.9 (CTAF) 281.5	GND CON 121.6	CLNC DEL 125.2	CLNC DEL 120.9 (when twr closed)	UNICOM 122.95	120.0
----------------------	---	--	-------------------------	--------------------------	---	-------------------------	--------------



ELEV 998	D	TDZE 991
----------	---	----------



FAF to MAP 5.8 NM					
Knots	60	90	120	150	180
Min:Sec	5:48	3:52	2:54	2:19	1:56



CATEGORY	A	B	C	D
S-ILS 21L	1334-7/8		343 (400-7/8)	
S-LOC 21L	1480-3/4	489 (500-3/4)	1480-1/8	489 (500-1/8)
☑ CIRCLING	1580-1	582 (600-1)	1840-2 1/2	2060-3
			842 (900-2/2)	1062 (1100-3)

SE-4, 21 MAY 2020 to 18 JUN 2020

SE-4, 21 MAY 2020 to 18 JUN 2020