

|  |                        |                             |   |
|--|------------------------|-----------------------------|---|
| WAAS<br>CH <b>77825</b><br><b>W04A</b> | APP CRS<br><b>044°</b> | Rwy Idg<br>TDZE<br>Apt Elev | <b>6001</b><br><b>279</b><br><b>279</b> |
|--|------------------------|-----------------------------|---|

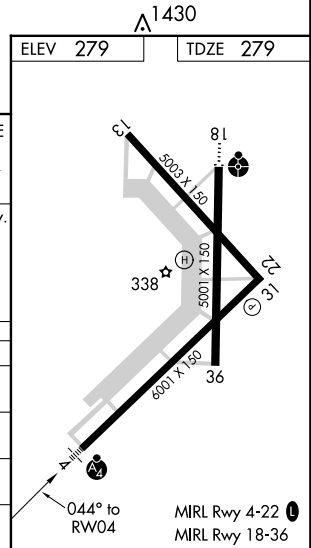
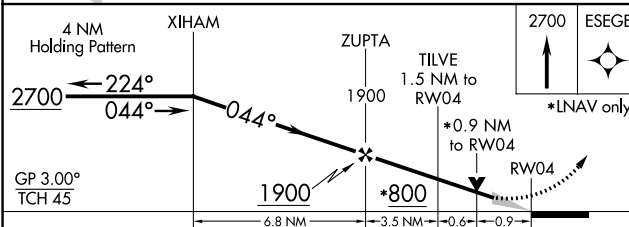
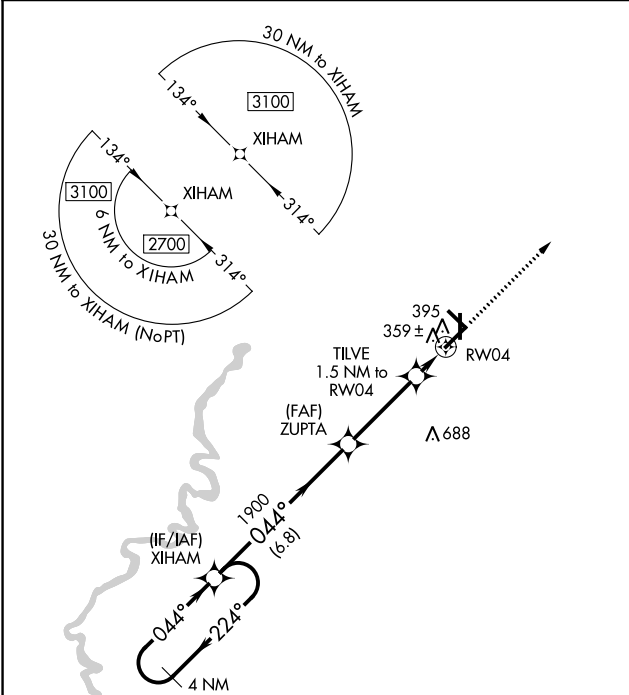
# RNAV (GPS) RWY 4

WALNUT RIDGE RGNL (A.R.G)

**⚠** Baro-VNAV NA when using Jonesboro altimeter setting. For uncompensated Baro-VNAV systems, LNAV/VNAV NA below -15°C (5°F) or above 42°C (107°F). DME/DME RNP-0.3 NA. VDP NA with Jonesboro altimeter setting. When local altimeter setting not received, use Jonesboro altimeter setting and increase all DA 54 feet and all MDA 60 feet; increase LPV and LNAV/VNAV all Cats visibility 1/4 mile and LNAV Cat C and D visibility 1/8 mile.

**MALSF**  
  
**MISSED APPROACH:**  
 Climb to 2700 direct ESEGE and hold.

|                            |  |                                 |
|----------------------------|--|---------------------------------|
| AWOS-3PT<br><b>135.925</b> | MEMPHIS CENTER<br><b>120.075 289.4</b> | UNICOM<br><b>122.8 (CTAF) 0</b> |
|----------------------------|--|---------------------------------|



| CATEGORY     | A     | B           | C                            | D                    |
|--------------|-------|-------------|------------------------------|----------------------|
| LPV DA       |       | 529-3/4     | 250 (300-3/4)                |                      |
| LNAV/VNAV DA |       | 529-3/4     | 250 (300-3/4)                |                      |
| LNAV MDA     |       | 620-1       | 341 (400-1)                  |                      |
| CIRCLING     | 760-1 | 481 (500-1) | 760-1 1/2<br>481 (500-1 1/2) | 840-2<br>561 (600-2) |

SC-1, 21 MAY 2020 to 18 JUN 2020

SC-1, 21 MAY 2020 to 18 JUN 2020