


WAAS CH <b>65925</b> <b>W18A</b>	APP CRS <b>179°</b>	Rwy Idg TDZE Apt Elev	<b>5001</b> <b>275</b> <b>279</b>
--	------------------------	-----------------------------	---

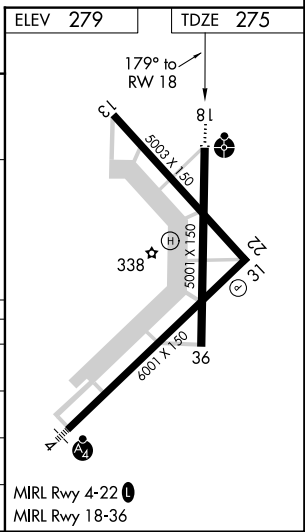
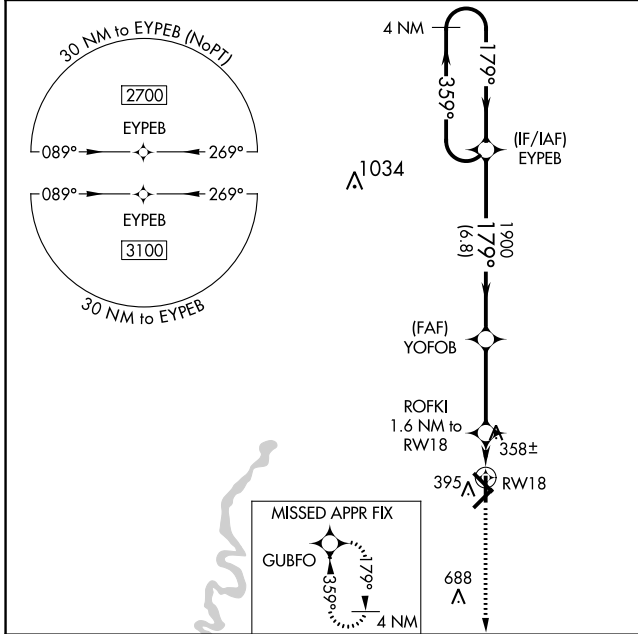
# RNAV (GPS) RWY 18

WALNUT RIDGE RGNL (A.R.G)

**⚠** For uncompensated Baro-VNAV systems, LNAV/VNAV NA below -15°C (5°F) or above 42°C (107°F). DME/DME RNP-0.3 NA. When local altimeter setting not received, use Jonesboro altimeter setting and increase all DA 54 feet and all MDA 60 feet; increase LNAV/VNAV all Cats visibility ¼ mile and LNAV Cat C and D visibility ⅓ mile. For inoperative ODALS, increase LPV all Cats and LNAV/VNAV all Cats visibility to ¾ mile and LNAV Cat C and D visibility to 1 mile. When using Jonesboro altimeter setting; for inoperative ODALS, increase LPV all Cats visibility to ⅞ mile, LNAV/VNAV all Cats visibility to 1 mile and LNAV Cat C and D visibility to 1 ⅓ mile. Baro-VNAV and VDP NA with Jonesboro altimeter setting.

ODALS  MISSED APPROACH: Climb to 3100 direct GUBFO and hold.

AWOS-3PT <b>135.925</b>	MEMPHIS CENTER <b>120.075 289.4</b>	UNICOM <b>122.8</b> (CTAF) 
----------------------------	--	---



4 NM Holding Pattern	EYEB	YOFOB	ROFKI 1.6 NM to RW18	3100	GUBFO
2700 ← 359°	179° →	1900	*820	*LNAV only.	
GP 3.00°			*1 NM to RW18		
TCH 45					
	6.8 NM	3.4 NM	0.6	1 NM	

CATEGORY	A	B	C	D
LPV DA		475-¾	200 (200-¾)	
LNAV/VNAV DA		525-¾	250 (300-¾)	
LNAV MDA	620-¾	345 (400-¾)	620-⅞	345 (400-⅞)
CIRCLING	760-1	481 (500-1)	760-1½	840-2
			481 (500-1½)	561 (600-2)

SC-1, 21 MAY 2020 to 18 JUN 2020

SC-1, 21 MAY 2020 to 18 JUN 2020