

WAAS CH 82726 W31A	APP CRS 308°	Rwy Idg 9111 TDZE 106 Apt Elev 115
----------------------------------------	------------------------	---------------------------------------------------------------

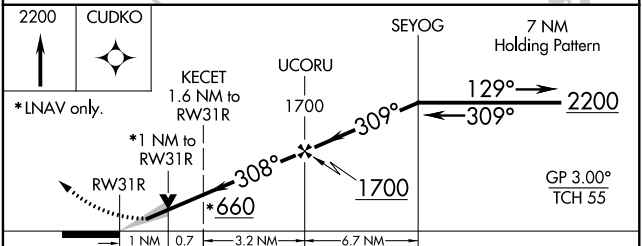
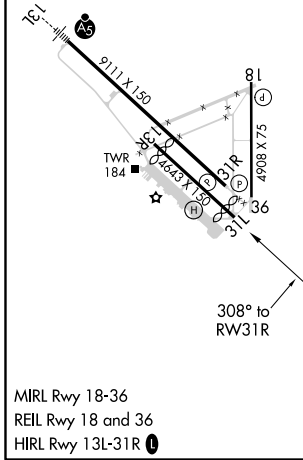
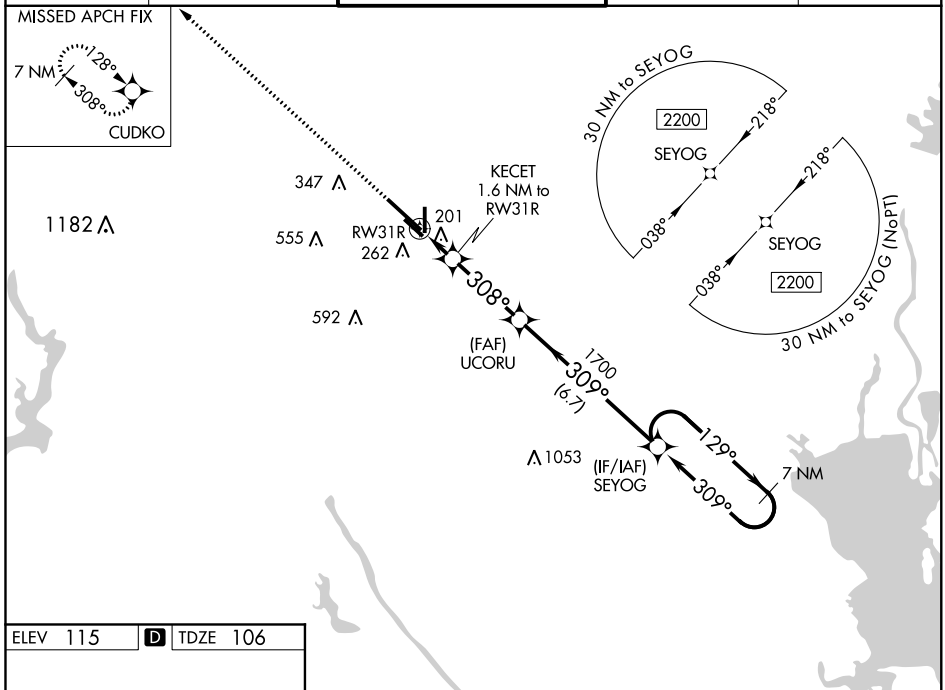
RNAV (GPS) RWY 31R

VICTORIA RGNL (VCT)

⚠ Baro-VNAV NA when using Port Lavaca altimeter setting. For uncompensated Baro-VNAV systems, LNAV/VNAV NA below -15°C (5°F) or above 43°C (109°F). When local altimeter setting not received, use Port Lavaca altimeter setting and increase all DA 52 feet and all MDA 60 feet. Increase LNAV/VNAV all Cats visibility to 1 mile and LNAV Cats C/D/E visibility to 1½ mile. DME/DME RNP-0.3 NA. VDP NA with Port Lavaca altimeter setting.

MISSED APPROACH: Climb to 2200 direct CUDKO and hold.

ATIS 119.025	HOUSTON CENTER 135.05 353.6	VICTORIA TOWER ★ 126.075 (CTAF) 257.95	GND CON 120.525 239.25	UNICOM 122.7
------------------------	---------------------------------------	--------------------------------------------------	----------------------------------	------------------------



CATEGORY	A	B	C	D	E
LPV DA		306-¾	200 (200-¾)		
LNAV/VNAV DA		374-7/8	268 (300-7/8)		
LNAV MDA		460-1	354 (400-1)		
CIRCLING	580-1	465 (500-1)	580-1½ 465 (500-1½)	680-2 565 (600-2)	NA

SC-5, 21 MAY 2020 to 18 JUN 2020

SC-5, 21 MAY 2020 to 18 JUN 2020