

LOC I-TJY 111.1	APP CRS 180°	Rwy ldg TDZE Apt Elev 6101 668 678
---------------------------	------------------------	--

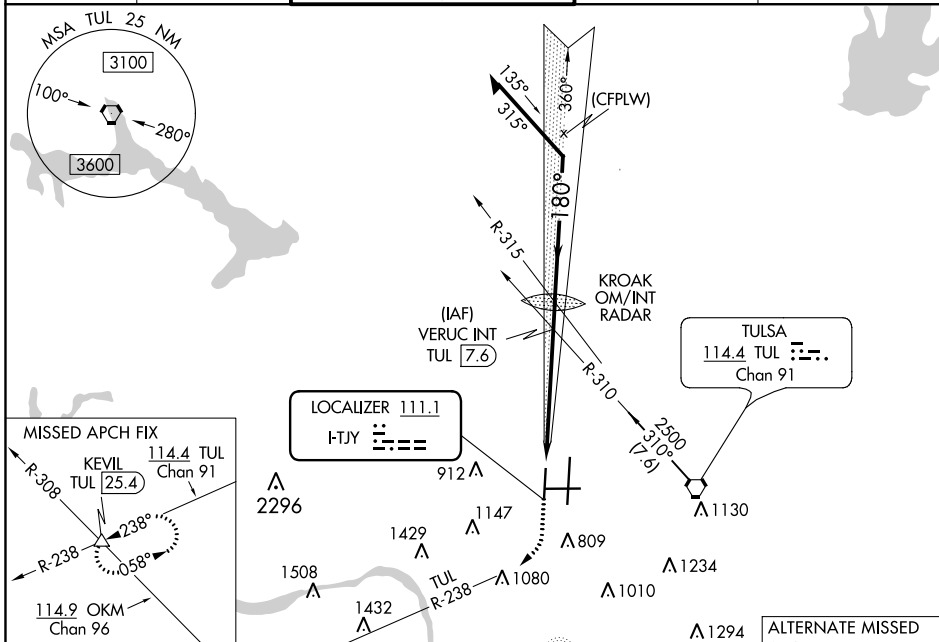
ILS or LOC RWY 18R

TULSA INTL (TUL)

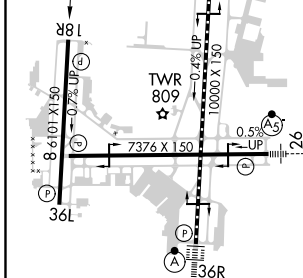
Simultaneous approach authorized with Rwy 18L.

MISSED APPROACH: Climb to 1400 then climbing right turn to 2600 via TUL VORTAC R-238 to KEVIL INT/TUL 25.4 DME and hold.

D-ATIS 124.9 377.2	TULSA APP CON 124.0 338.3	TULSA TOWER 121.2 310.8 (Rwys 18L-36R, 8-26) 118.7 257.8 (Rwy 18R-36L)	GND CON 121.9 348.6	CLNC DEL 134.05 284.7
------------------------------	-------------------------------------	--	-------------------------------	---------------------------------



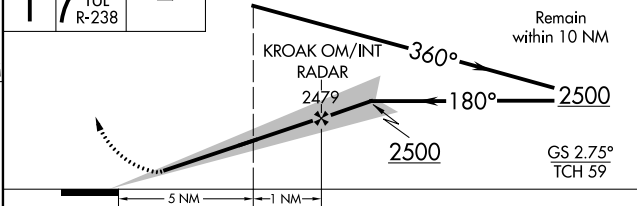
ELEV 678	D	TDZE 668
----------	----------	----------



1400 2600 KEVIL
TUL R-238

VERUC INT TUL 7.6

VGSI and ILS glidepath not coincident (VGSI Angle 2.75/TCH 63).



TDZ/CL Rwy 36R HIRL Rwys 8-26, 18L-36R and 18R-36L REIL Rwys 8, 18R, 26 and 36L FAF to MAP 6 NM					
Knots	60	90	120	150	180
Min:Sec	6:00	4:00	3:00	2:24	2:00
C CIRCLING	1120-1 442 (500-1)	1160-1 482 (500-1)	1520-2½ 842 (900-2½)	1520-2¾ 842 (900-2¾)	

SC-1, 21 MAY 2020 to 18 JUN 2020

SC-1, 21 MAY 2020 to 18 JUN 2020