

WAAS CH 78399 W31A	APP CRS 312°	Rwy Idg 12803 TDZE 1037 Apt Elev 1078
--	------------------------	--

RNAV (GPS) RWY 31

TOPEKA RGNL (F/OE)

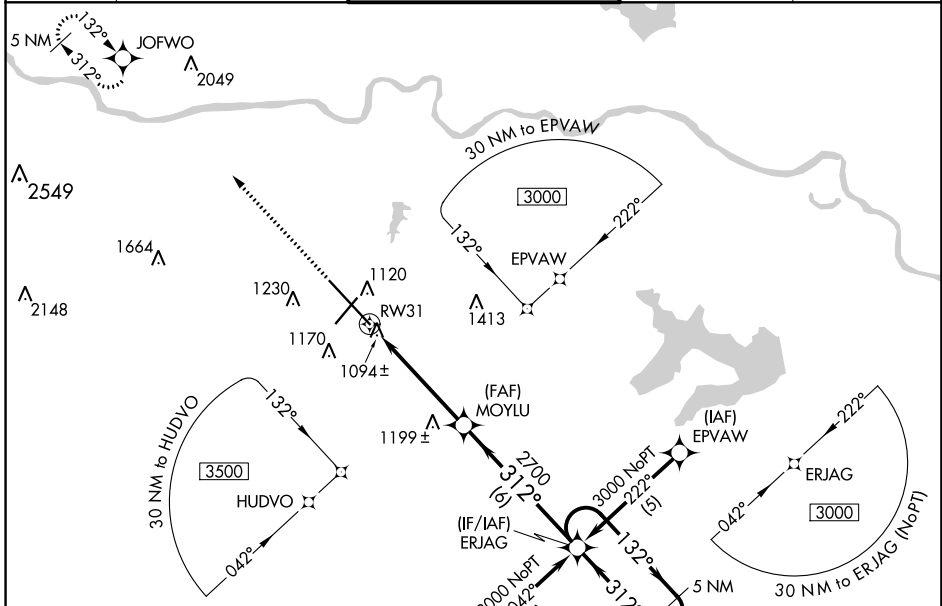
⚠ For inoperative MALSR, increase LPV all Cats visibility to RVR 4000, and LNAV/VNAV Cat D to RVR 5000. Baro-VNAV NA when using Philip Billard Muni altimeter setting. If local altimeter setting not received, use Philip Billard Muni altimeter setting and increase all DAs/MDAs 60 feet. Baro-VNAV NA below -17°C (2°F). DME/DME RNP-0.3 NA. VDP NA when using Philip Billard Muni altimeter setting.

MALSR

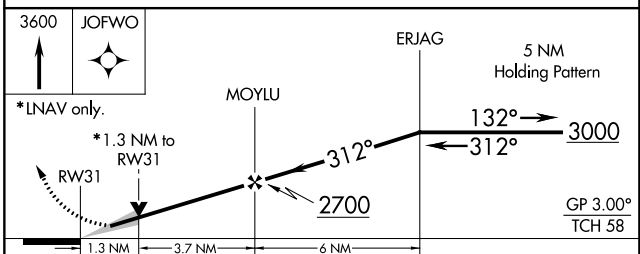
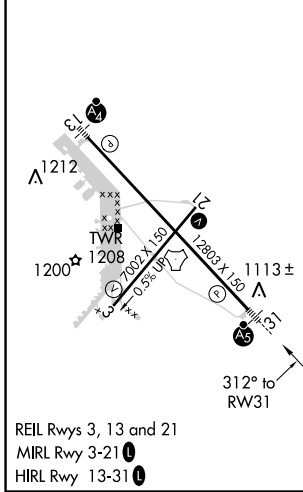


MISSED APPROACH:
Climb to 3600 direct JOFWO and hold.

ATIS 128.25	KANSAS CITY CENTER 123.8 343.7	FORBES TOWER* 120.8 (CTAF) 340.2	GND CON 118.425 275.8	UNICOM 122.95
-----------------------	--	--	---------------------------------	-------------------------



ELEV 1078	D	TDZE 1037
-----------	----------	-----------



CATEGORY	A	B	C	D
LPV DA	1298/24 261 (300-½)			
LNAV/VNAV DA	1357/24 320 (300-½)			1357/40 320 (300-¾)
LNAV MDA	1500/24	463 (500-½)	1500/40 463 (500-¾)	1500/50 463 (500-1)
C CIRCLING	1520-1 442 (500-1)	1580-1 502 (600-1)	1580-1½ 502 (600-1½)	1700-2 622 (700-2)

NC-2, 21 MAY 2020 to 18 JUN 2020

NC-2, 21 MAY 2020 to 18 JUN 2020