

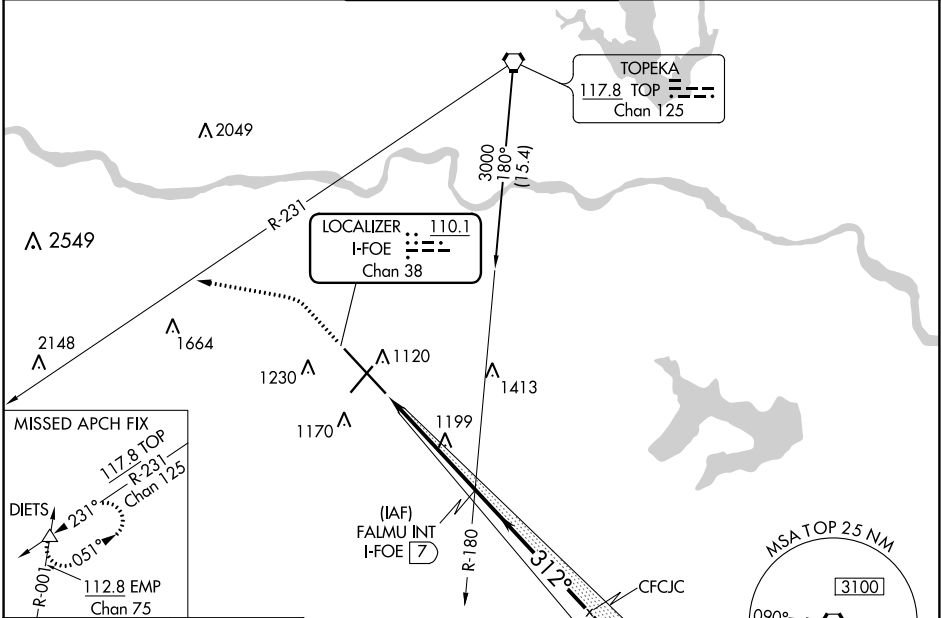
LOC/DME I-FOE <b>110.1</b> Chan <b>38</b>	APP CRS <b>312°</b>	Rwy Idg <b>12803</b> TDZE <b>1037</b> Apt Elev <b>1078</b>
---	------------------------	--

# ILS or LOC RWY 31

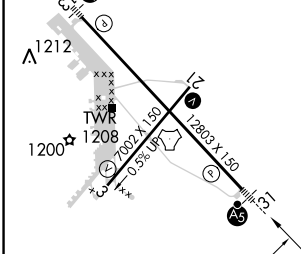
TOPEKA RGNL (F/OE)

<p><b>RADAR</b> required for Cat E for Procedure Entry.</p> <p><b>▼</b> For inop ALS, increase S-ILS Cat E visibility to RVR 4000 and S-LOC Cat E visibility to 1½ SM. # RVR 1800 authorized with use of FD or AP or HUD to DA.</p>		<p><b>MALSR</b></p>	<p><b>MISSED APPROACH:</b> Climb to 1900 then climbing left turn to 3700 on heading 275° and on TOP VORTAC R-231 to DIETS INT and hold.</p>
---	--	---------------------	---

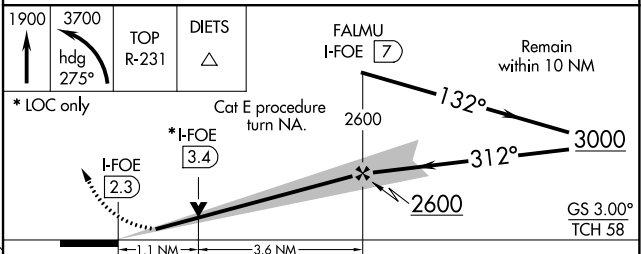
<p><b>ATIS</b> <b>128.25</b></p>	<p><b>KANSAS CITY CENTER</b> <b>123.8 343.7</b></p>	<p><b>FORBES TOWER*</b> <b>120.8 (CTAF) 0 340.2</b></p>	<p><b>GND CON</b> <b>118.425 275.8</b></p>	<p><b>UNICOM</b> <b>122.95</b></p>
--------------------------------------	---	---	--	--



ELEV 1078	<b>D</b>	TDZE 1037
-----------	----------	-----------



REIL Rws 3, 13 and 21	312° 4.7 NM from FAF
MIRL Rwy 3-21	
HIRL Rwy 13-31	
FAF to MAP 4.7 NM	
Knots	60 90 120 150 180
Min:Sec	4:42 3:08 2:21 1:53 1:34



CATEGORY	A	B	C	D	E
S-ILS 31 #	1237/24 200 (200-½)				
S-LOC 31	1460/24	423 (400-½)	1460/40	423 (400-¾)	
<b>C</b> CIRCLING	1520-1 442 (500-1)	1580-1 502 (600-1)	1580-1½ 502 (600-1½)	1700-2 622 (700-2)	1720-2¼ 642 (700-2¼)