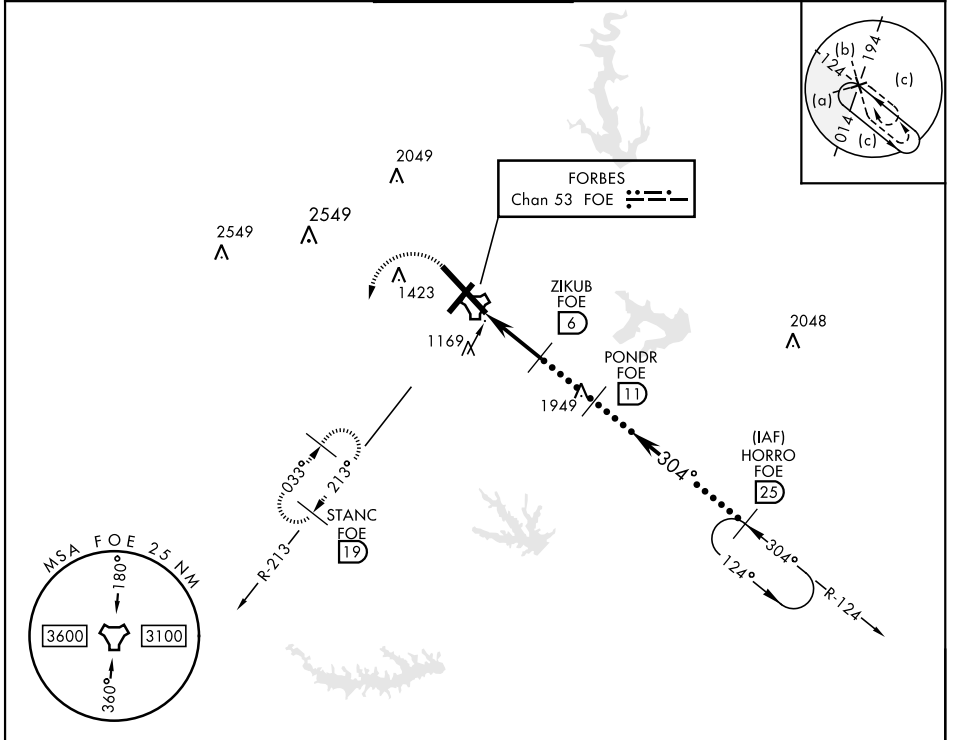


HI-TACAN RWY 31

TACAN Chan 53	FOE 304°	APCH CRS 304°	Rwy ldg TDZE 1037 Arprt Elev 1078	JAL-424 [USAF]	TOPEKA RGNL (KFOE)
* For ALS inop, increase CAT CDE vis to 1%.				MALSR 	MISSED APPROACH: Climbing left turn to 3000 via heading 190° and FOE TACAN R-213 to STANC/19° DME and hold.

ATIS 128.25	KANSAS CITY CENTER 123.8 343.7	FORBES TOWER * 120.8 (CTAF) 340.2	GND CON 118.425 275.8	UNICOM 122.95
-----------------------	--	---	---------------------------------	-------------------------



EMERG SAFE ALT 100 NM 3600

3000 FOE R-213 STANC FOE 19	HORRO R-124 25 FL 250 10,000	PONDNR 11 3000	ZIKUB 6 2700	TACAN BUMKE 8 21 2700
5.2 NM				
CATEGORY S-31*	C 1520/50 502 (600-1½)	D 483 (500-1) 1700-2 622 (700-2)	E 1720-2¼ 642 (700-2¼)	ELEV 1078 TDZE 1037
CIRCLING	1580-1½ 502 (600-1½)	1700-2 622 (700-2)	1720-2¼ 642 (700-2¼)	MRL Rwy 3-21 REIL Rwy 3, 13, and 21 HIRL Rwy 13-31 304° to TACAN

HI-TACAN RWY 31

NC-2, 21 MAY 2020 to 18 JUN 2020

NC-2, 21 MAY 2020 to 18 JUN 2020