

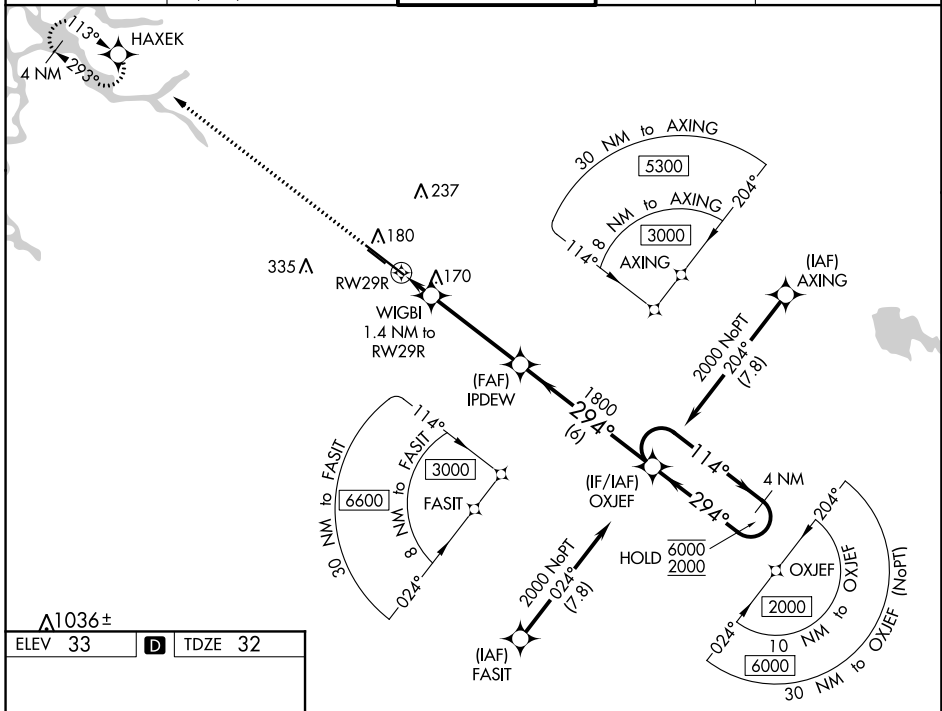
WAAS CH 87010 W29A	APP CRS 294°	Rwy Idg 8650 TDZE 32 Apt Elev 33
--	------------------------	---

RNAV (GPS) RWY 29R

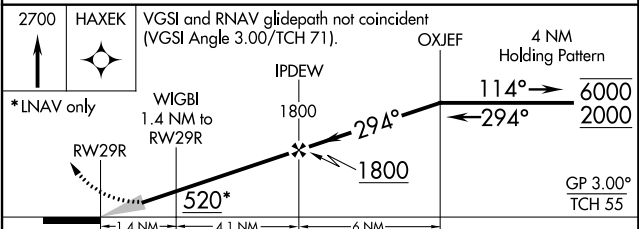
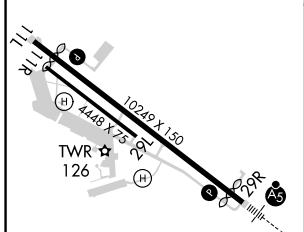
STOCKTON METROPOLITAN (SCK)

RNP APCH.	MALSR 	MISSED APPROACH: Climb to 2700 direct HAXEK and hold.
<p>▼ For uncompensated Baro-VNAV systems, LNAV/VNAV NA below -3°C or above 54°C. For inop ALS, increase LNAV/VNAV visibility all Cats to RVR 4500. #RVR 1800 authorized with use of FD or AP or HUD to DA.</p>		

ATIS 118.25	NORCAL APP CON (SE-NW) 123.85 278.3 (N-SE) 125.1 363.2	STOCKTON TOWER ★ 120.3 (CTAF) 0 239.0	GND CON 121.9	UNICOM 122.95
-----------------------	--	--	-------------------------	-------------------------



△1036±	ELEV 33	D	TDZE 32
---------------	----------------	----------	----------------



CATEGORY	A	B	C	D
LPV DA#		232/24	200 (200-½)	
LNAV/VNAV DA		320/24	288 (300-½)	
LNAV MDA	420/24	388 (400-½)	420/35	388 (400-⅝)
C CIRCLING	500-1 467 (500-1)	540-1 507 (600-1)	640-1¾ 607 (700-1¾)	640-2 607 (700-2)

SW-2, 21 MAY 2020 to 18 JUN 2020

SW-2, 21 MAY 2020 to 18 JUN 2020