

LOC/DME I-SCK <b>109.1</b> Chan 28	APP CRS <b>294°</b>	Rwy Idg TDZE Apt Elev	<b>8650</b> <b>32</b> <b>33</b>
--	------------------------	-----------------------------	---------------------------------------

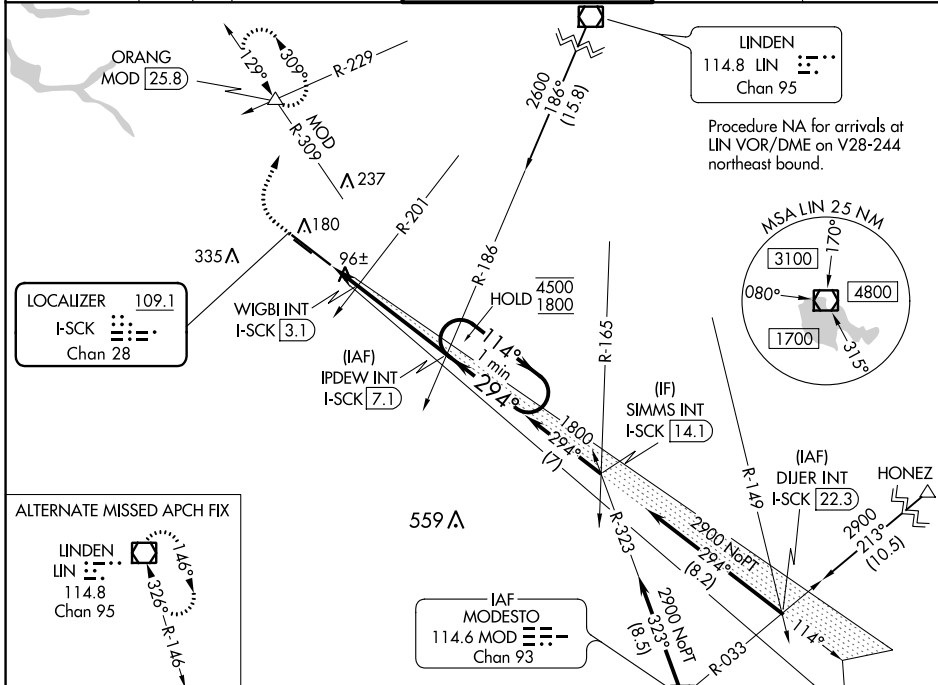
# ILS or LOC RWY 29R

## STOCKTON METROPOLITAN (SCK)

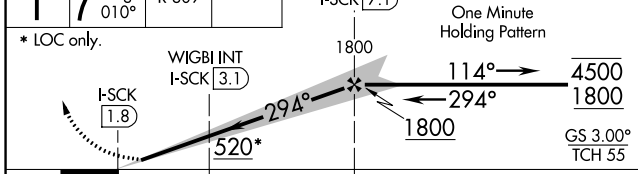
**⚠** For inop ALS, increase S-LOC 29R Cat C/D visibility to 1 3/8 SM.  
**⚠** #RVR 1800 authorized with use of FD or AP or HUD to DA.

MALS R MISSED APPROACH: Climb to 500 then climbing right turn to 2000 on heading 010° and MOD VOR/DME R-309 to ORANG INT/MOD 25.8 DME and hold.

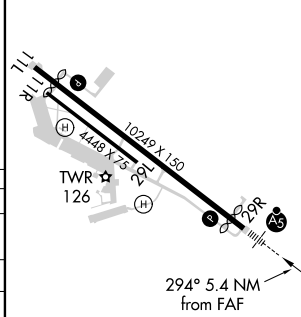
ATIS <b>118.25</b>	NORCAL APP CON (SE-NW) <b>123.85 278.3</b> (N-SE) <b>125.1 363.2</b>	STOCKTON TOWER * <b>120.3 (CTAF) 0 239.0</b>	GND CON <b>121.9</b>	UNICOM <b>122.95</b>
-----------------------	--	---	-------------------------	-------------------------



500	2000	MOD R-309	ORANG	VGSI and ILS glidepath not coincident (VGSI Angle 3.00/TCH 71).
				IPDEW INT I-SCK [7.1]



ELEV 33	<b>D</b> TDZE 32
---------	------------------



CATEGORY	A	B	C	D
S-ILS 29R #	232/24		200 (200-1/2)	
S-LOC 29R	520/24 488 (500-1/2)		520/50 488 (500-1)	
<b>C</b> CIRCLING	520-1 487 (500-1)	540-1 507 (600-1)	640-1 3/4 607 (700-1 3/4)	640-2 607 (700-2)
WIGBI FIX MINIMUMS (DUAL VOR RECEIVERS or DME REQUIRED)				
S-LOC 29R	360/24 328 (400-1/2)		360/26 328 (400-1/2)	
<b>C</b> CIRCLING	500-1 467 (500-1)	540-1 507 (600-1)	640-1 3/4 607 (700-1 3/4)	640-2 607 (700-2)

FAF to MAP 5.4 NM					
Knots	60	90	120	150	180
Min:Sec	5:24	3:36	2:42	2:10	1:48

SW-2, 21 MAY 2020 to 18 JUN 2020

SW-2, 21 MAY 2020 to 18 JUN 2020