

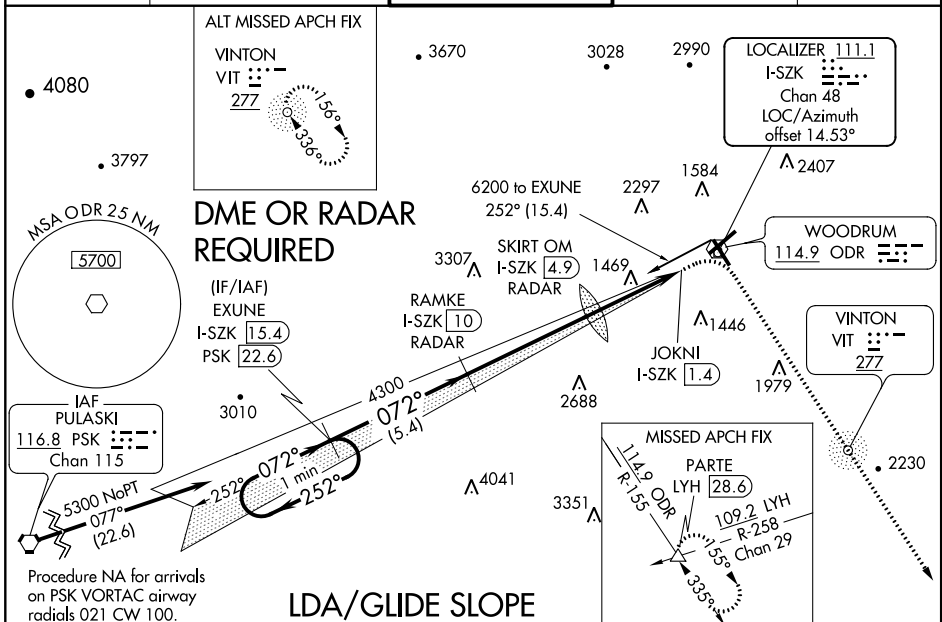
LOC/DME I-SZK <b>111.1</b> Chan <b>48</b>	APP CRS <b>072°</b>	Rwy ldg <b>6800</b> TDZE <b>1175</b> Apt Elev <b>1175</b>
---	------------------------	---

# LDA Y RWY 6

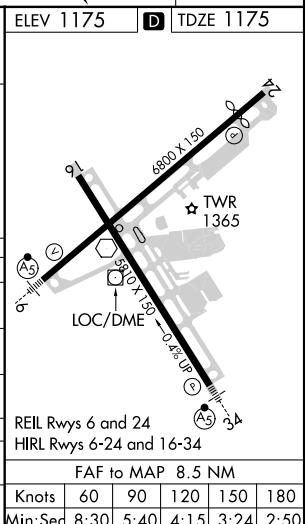
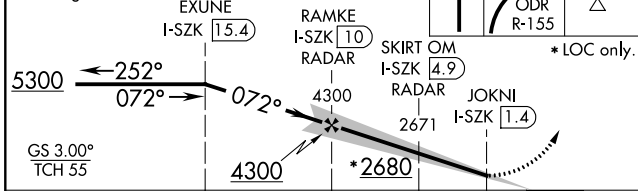
ROANOKE-BLACKSBURG RGNL/WOODRUM FIELD (R.O.A)

<p>▼ Inop table does not apply to S-LDA 6 Cats C and D. Circling NA NW of Rwy 6-24. For inop MALSR, increase S-LDA/GS 6 all Cats visibility to 1½.</p> <p>⚠ -13° C</p>	<p>MALSR</p>	<p>MISSED APPROACH: Climb to 1800 then climbing right turn to 5000 on ODR VOR R-155 to PARTE INT/LYH 28.6 DME and hold, continue climb-in-hold to 5000.</p>
--	--------------	---

<p>ATIS <b>132.375</b></p>	<p>ROANOKE APP CON <b>126.9 339.8</b></p>	<p>ROANOKE TOWER <b>118.3 257.8</b></p>	<p>GND CON <b>121.9 257.8</b></p>	<p>CLNC DEL <b>119.7</b></p>
--------------------------------	---	---	---------------------------------------	----------------------------------



One Minute Holding Pattern	VGSI and LDA glidepath not coincident (VGSI Angle 3.00/TCH 58). EXUNE I-SZK 15.4	1800	5000	PARTE	ELEV 1175	TDZE 1175
----------------------------	---	------	------	-------	-----------	-----------



CATEGORY	A	B	C	D
S-LDA/GS 6	1615-1½		440 (500-1½)	
S-LDA 6	2680-1	1505 (1600-1)	2680-3	1505 (1600-3)
Ⓢ CIRCLING	2680-1½ 1505 (1600-1½)	2680-1½ 1505 (1600-1½)	2680-3 1505 (1600-3)	2800-3 1625 (1700-3)
SKIRT OM/DME/RADAR				
S-LDA 6	1720-1	545 (600-1)	1720-1½	545 (600-1½)
Ⓢ CIRCLING	1720-1½	545 (600-1½)	2420-3 1245 (1300-3)	2800-3 1625 (1700-3)

# LDA Y RWY 6

NE-3, 21 MAY 2020 to 18 JUN 2020

NE-3, 21 MAY 2020 to 18 JUN 2020