
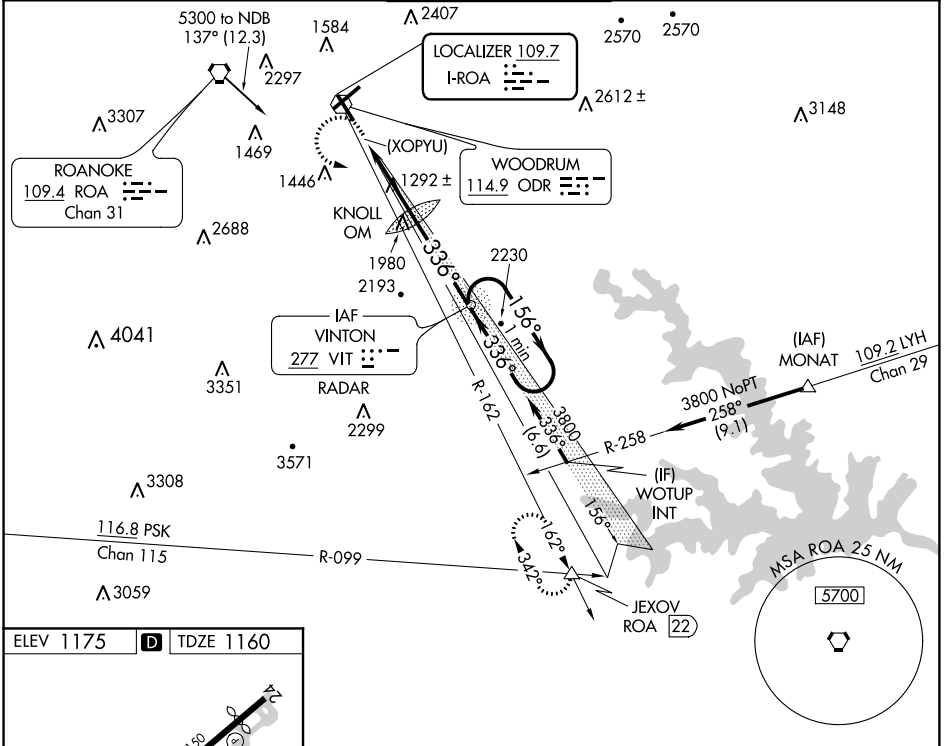


LOC I-ROA <b>109.7</b>	APP CRS <b>336°</b>	Rwy ldg <b>5810</b> TDZE <b>1160</b> Apt Elev <b>1175</b>
---------------------------	------------------------	--

**ILS or LOC RWY 34**

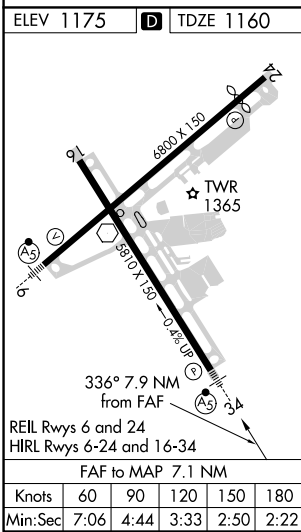
ROANOKE-BLACKSBURG RGNL/WOODRUM FIELD (R.O.A)


 MALSR	MISSED APPROACH: Climb to 2100 then climbing left turn to 5000 on heading 125° and ODR R-162 to JEXOV INT/ROA 22 DME and hold.			
ATIS <b>132.375</b>	ROANOKE APP CON <b>126.9 339.8</b>	ROANOKE TOWER <b>118.3 257.8</b>	GND CON <b>121.9 257.8</b>	CLNC DEL <b>119.7</b>



NE-3, 21 MAY 2020 to 18 JUN 2020

NE-3, 21 MAY 2020 to 18 JUN 2020



2100 ↑	5000 hdg 125°	ODR R-162	JEXOV △	VIT NDB RADAR	One Minute Holding Pattern
*LOC only.					
(XOPYU)	KNOLL OM 2527	3780	156°	3800	3800
2560*	336°	3800	336°	3800	GS 3.00° TCH 56
0.8	3.3 NM	3.8 NM			
CATEGORY	A	B	C	D	
S-ILS 34	1810-1¾	650 (700-1¾)		1913-2¼ 753 (700-2¼)	
S-LOC 34	1980-1	820 (900-1)	1980-1⅞	820 (900-1⅞)	
 CIRCLING	1980-1 805 (900-1)	1980-1¼ 805 (900-1¼)	2420-3 1245 (1300-3)	2800-3 1625 (1700-3)	

**ILS or LOC RWY 34**