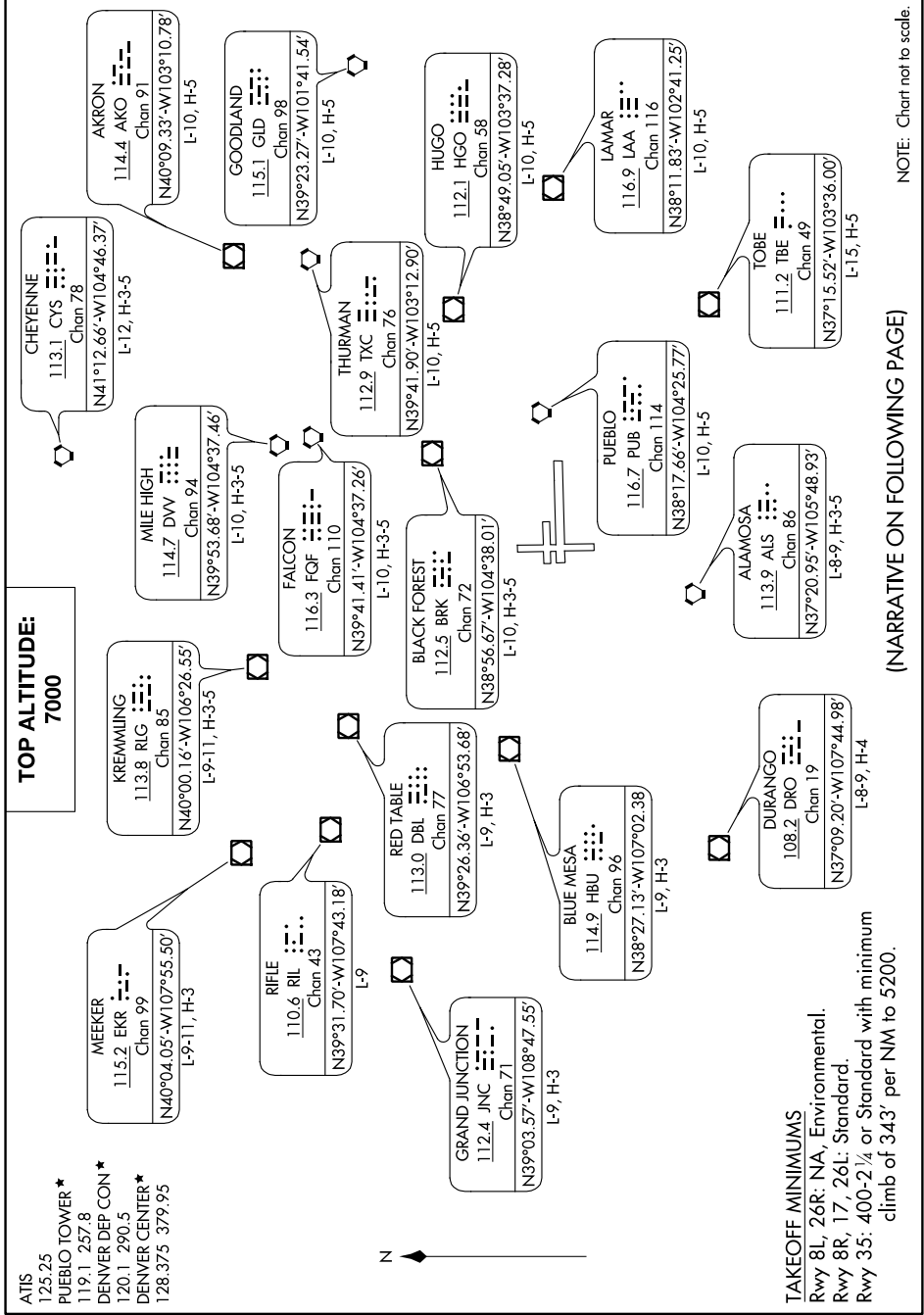


CANYON FOUR DEPARTURE

AL-334 (FAA)

PUEBLO MEMORIAL (PUB)
PUEBLO, COLORADO

SW-1, 21 MAY 2020 to 18 JUN 2020



**TOP ALTITUDE:
7000**



- ATIS 125.25
- PUEBLO TOWER * 119.1 257.8
- DENVER DEP CON * 120.1 290.5
- DENVER CENTER * 128.375 379.95

TAKEOFF MINIMUMS

- Rwy 8L, 26R: NA, Environmental.
- Rwy 8R, 17, 26L: Standard.
- Rwy 35: 400-2 1/4 or Standard with minimum climb of 343' per NM to 5200.

(NARRATIVE ON FOLLOWING PAGE)

NOTE: Chart not to scale.

SW-1, 21 MAY 2020 to 18 JUN 2020