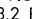
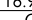



GULLI TWO ARRIVAL

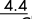
OKLAHOMA CITY, OKLAHOMA

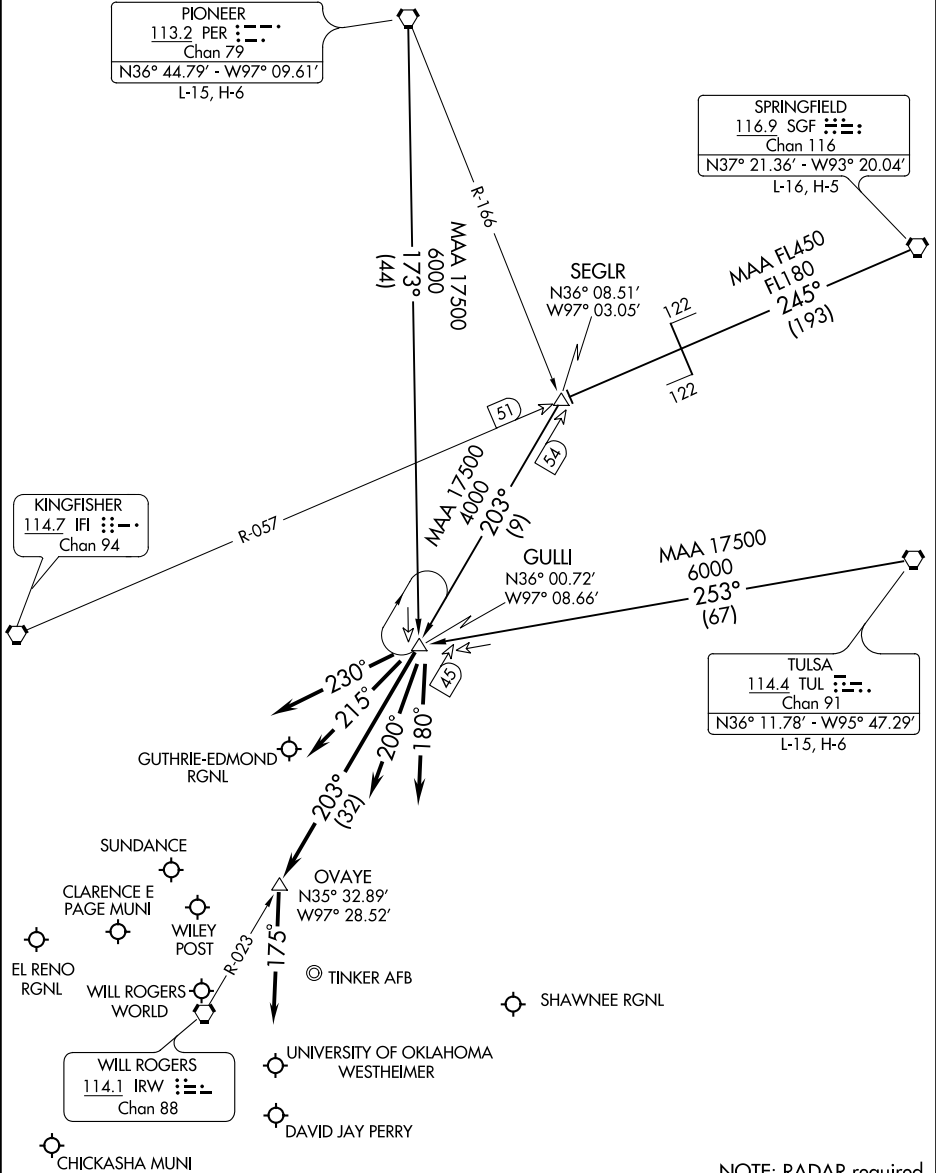
OKC APP CON
124.2 336.4

PIONEER
113.2 PER 
Chan 79
N36° 44.79' - W97° 09.61'
L-15, H-6

SPRINGFIELD
116.9 SGF 
Chan 116
N37° 21.36' - W93° 20.04'
L-16, H-5

KINGFISHER
114.7 IFI 
Chan 94

TULSA
114.4 TUL 
Chan 91
N36° 11.78' - W95° 47.29'
L-15, H-6



SC-1, 21 MAY 2020 to 18 JUN 2020

SC-1, 21 MAY 2020 to 18 JUN 2020

(NARRATIVE ON FOLLOWING PAGE)

NOTE: RADAR required.

NOTE: Chart not to scale.

GULLI TWO ARRIVAL

(GULLI.GULLI2) 29MAR18

OKLAHOMA CITY, OKLAHOMA