

NORFOLK, VIRGINIA

# TACAN RWY 28

TACAN NGU Chan <b>86Y</b>	APCH CRS <b>290°</b>	Rwy ldg <b>7375</b> TDZE <b>14</b> Arpt Elev <b>15</b>
------------------------------	-------------------------	--

AL-290 [USN]

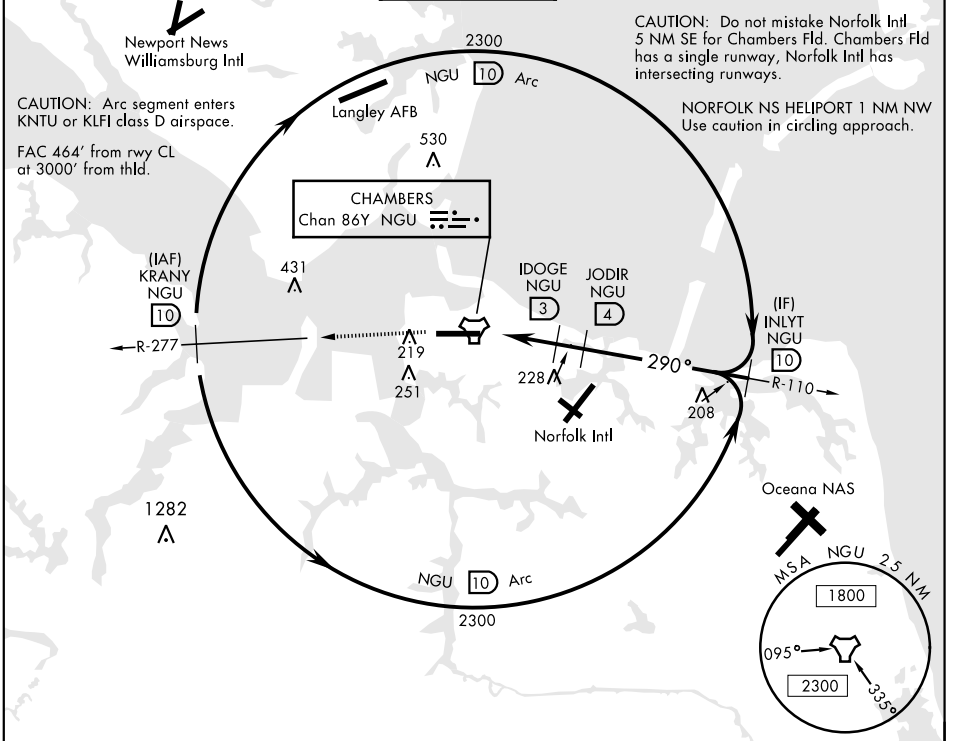
NORFOLK NS (CHAMBERS FIELD) (KNGU)

▼ \* When ALS inop, increase CAT AB vis to 1 mile, CAT CD vis to 1 3/8 miles.  
 \*\* Circling not authorized S of Rwy 10-28.  
 Helicopter vis reduction below 3/4 mile not authorized.



MISSED APPROACH: Climb to 2300 on NGU TACAN R-277 then as directed by ATC.

ATIS <b>118.425 342.0</b>	NORFOLK APP CON <b>118.9 353.7</b>	CHAMBERS TOWER <b>124.3 379.15</b>	GND CON <b>121.8 370.85</b>	CLNC DEL <b>120.7 339.8</b>	ASR/PAR
------------------------------	---------------------------------------	---------------------------------------	--------------------------------	--------------------------------	---------



CAUTION: Do not mistake Norfolk Intl 5 NM SE for Chambers Fld. Chambers Fld has a single runway, Norfolk Intl has intersecting runways.

NORFOLK NS HELIPORT 1 NM NW  
Use caution in circling approach.

CAUTION: Arc segment enters KNTU or KLF1 class D airspace.

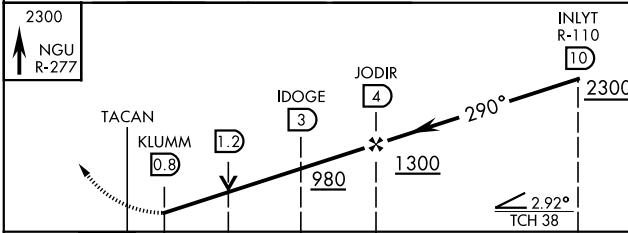
FAC 464' from rwy CL at 3000' from thld.

NE-3, 21 MAY 2020 to 18 JUN 2020

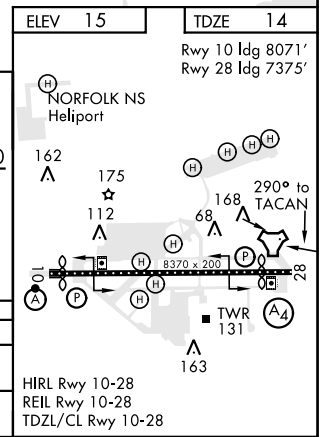
NE-3, 21 MAY 2020 to 18 JUN 2020

## RADAR REQUIRED

EMERG SAFE ALT 100 NM 4100



CATEGORY	A	B	C	D
S-28 *	460-3/4	446 (500-3/4)	460-1	446 (500-1)
CIRCLING**	500-1 485 (500-1)	560-1 545 (600-1)	560-1 1/2 545 (600-1 1/2)	580-2 565 (600-2)



NORFOLK, VIRGINIA

36° 56' N - 76° 17' W

NORFOLK NS (CHAMBERS FIELD) (KNGU)

Amdt 6 26MAR20

# TACAN RWY 28