

NORFOLK, VIRGINIA

RNAV (GPS) RWY 28

APCH CRS 280°	Rwy ldg TDZE 14	Arpt Elev 15
-------------------------	------------------------------	------------------------

AL-290 [USN]

NORFOLK NS (CHAMBERS FIELD) (KNGU)

▼ * When ALS inop, increase vis to 1½ mile. Helicopter vis reduction below ¾ NA.
 ** When ALS inop, increase CAT AB vis to 1 mile; CAT CDE vis to 1½ miles.
 *** Circling not authorized S of Rwy 10-28.

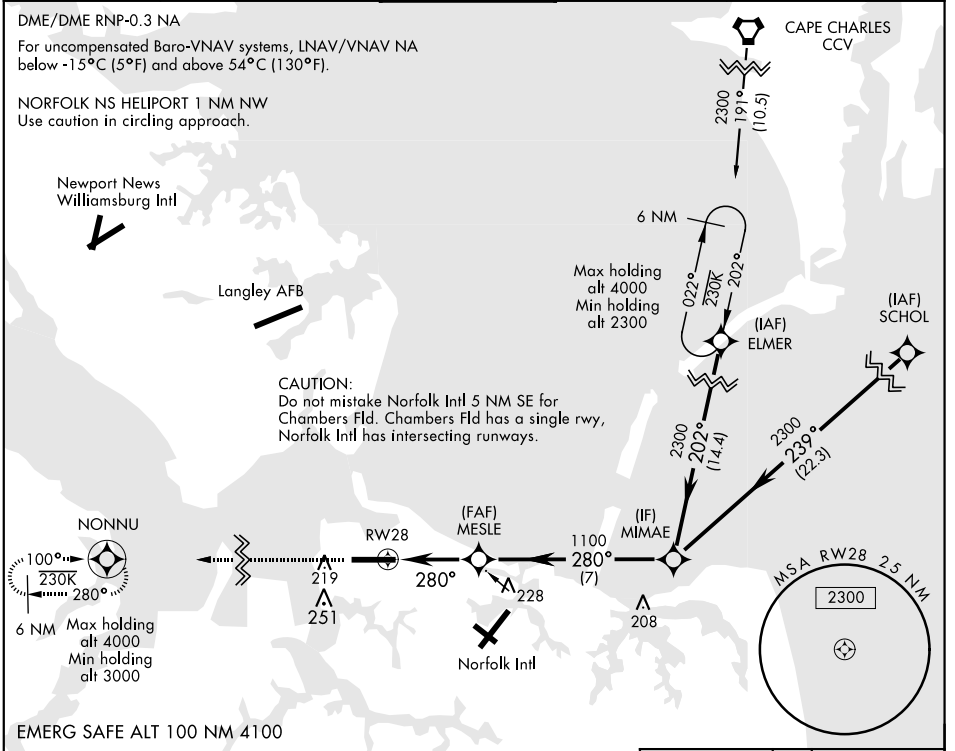
SSALS MISSED APPROACH: Climb to 3000 direct NONNU and hold, continue climb in hold to 3000.

ATIS 118.425 342.0	NORFOLK APP CON 118.9 353.7	CHAMBERS TOWER 124.3 379.15	GND CON 121.8 370.85	CLNC DEL 120.7 339.8	ASR/PAR
------------------------------	---------------------------------------	---------------------------------------	--------------------------------	--------------------------------	---------

DME/DME RNP-0.3 NA

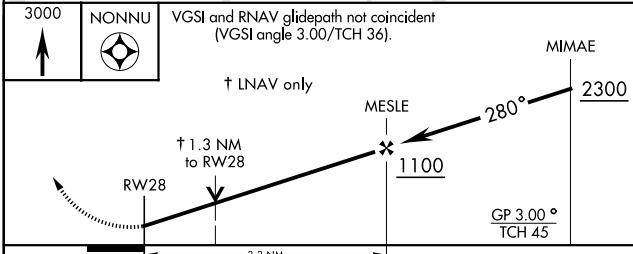
For uncompensated Baro-VNAV systems, LNAV/VNAV NA below -15°C (5°F) and above 54°C (130°F).

NORFOLK NS HELIPORT 1 NM NW
Use caution in circling approach.

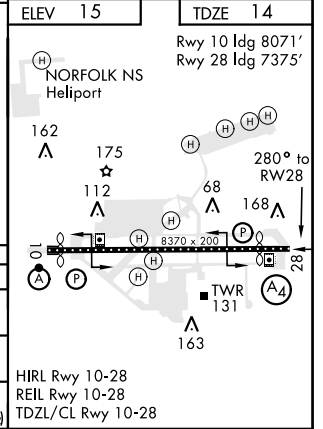


CAUTION:
Do not mistake Norfolk Intl 5 NM SE for Chambers Fld. Chambers Fld has a single rwy, Norfolk Intl has intersecting runways.

EMERG SAFE ALT 100 NM 4100



CATEGORY	A	B	C	D	E
LNAV/VNAV DA *	400-7/8		386	(400-7/8)	
LNAV MDA **	460-3/4 446 (500-3/4)		460-1 446 (500-1)		
CIRCLING ***	500-1 485 (500-1)	560-1 545 (600-1)	560-1½ 545 (600-1½)	580-2 565 (600-2)	700-2½ 685 (700-2½)



HIRL Rwy 10-28
REIL Rwy 10-28
TDZL/CL Rwy 10-28

NORFOLK, VIRGINIA
Amdt 5 26MAR20

36°56'N-76°17'W

NORFOLK NS (CHAMBERS FIELD) (KNGU)

RNAV (GPS) RWY 28

NE-3, 21 MAY 2020 to 18 JUN 2020

NE-3, 21 MAY 2020 to 18 JUN 2020