

NORFOLK, VIRGINIA

RNAV (GPS) RWY 10

APCH CRS	Rwy ldg	8071
100°	TDZE	14
	Arpt Elev	15

AL-290 [UN]

NORFOLK NS (CHAMBERS FIELD) (KNGU)

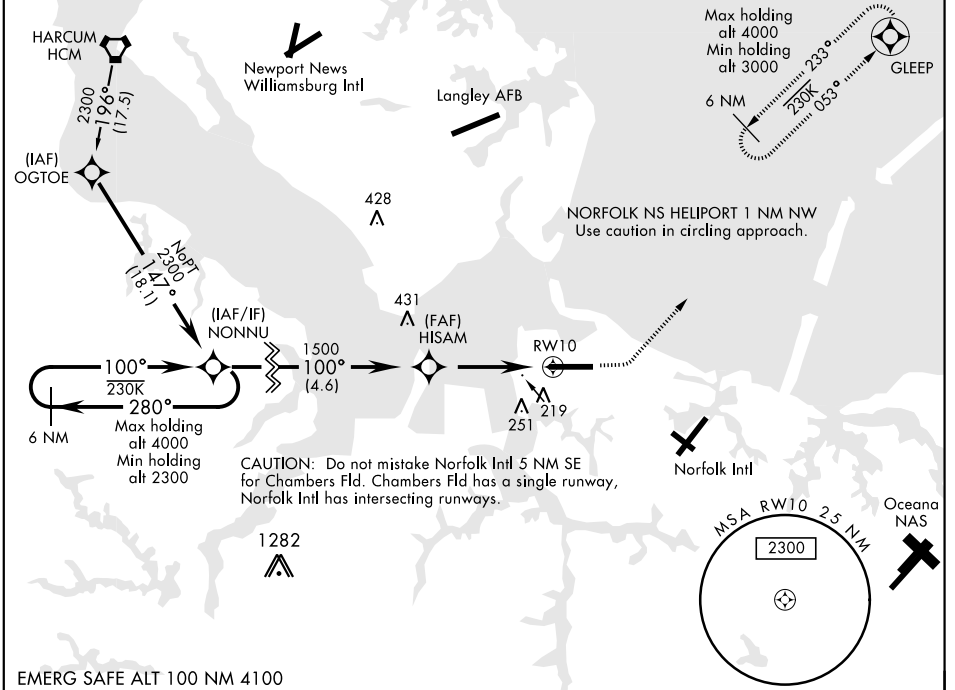
▼ * When ALS inop, increase vis to 1 3/8 miles.
 ** When ALS inop, increase CAT AB vis to 1 mile, CAT CDE vis to 1 3/8 miles.



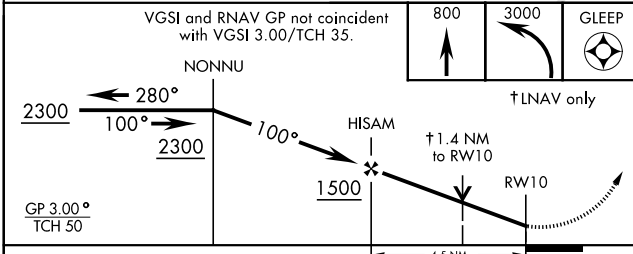
MISSED APPROACH: Climb to 800 then climbing left turn to 3000 direct GLEEP and hold.

ATIS 118.425 342.0	NORFOLK APP CON 118.9 353.7	CHAMBERS TOWER 124.3 379.15	GND CON 121.8 370.85	CLNC DEL 120.7 339.8	ASR/PAR
------------------------------	---------------------------------------	---------------------------------------	--------------------------------	--------------------------------	---------

*** Circling not authorized S of Rwy 10-28. For uncompensated Baro-VNAV systems LNAV/VNAV NA below -15°C (5°F) and above 54°C (130°F).
 DME/DME RNP-0.3 NA



EMERG SAFE ALT 100 NM 4100



ELEV	15	TDZE	14
Rwy 10 ldg 8071' Rwy 28 ldg 7375'			
HIRL Rwy 10-28 REIL Rwy 10-28 TDZL/CL Rwy 10-28			

CATEGORY	A	B	C	D	E
LNAV/VNAV DA*	500-1		486	(500-1)	
LNAV MDA**	500-1/2 486 (500-1/2)		500-1	486	(500-1)
CIRCLING***	500-1 485 (500-1)	560-1 545 (600-1)	560-1 1/2 545 (600-1 1/2)	580-2 565 (600-2)	700-2 1/2 685 (700-2 1/2)

NORFOLK, VIRGINIA
Amdt 6 26MAR20

36° 56' N-76° 17' W

NORFOLK NS (CHAMBERS FIELD) (KNGU)

RNAV (GPS) RWY 10

NE-3, 21 MAY 2020 to 18 JUN 2020

NE-3, 21 MAY 2020 to 18 JUN 2020