

NORFOLK, VIRGINIA

ILS or LOC/DME RWY 10

LOC I-NGU 108.95	APCH CRS 100°	Rwy ldg TDZE Arprt Elev 8071 14 15
----------------------------	-------------------------	---

AL-290 [USN]

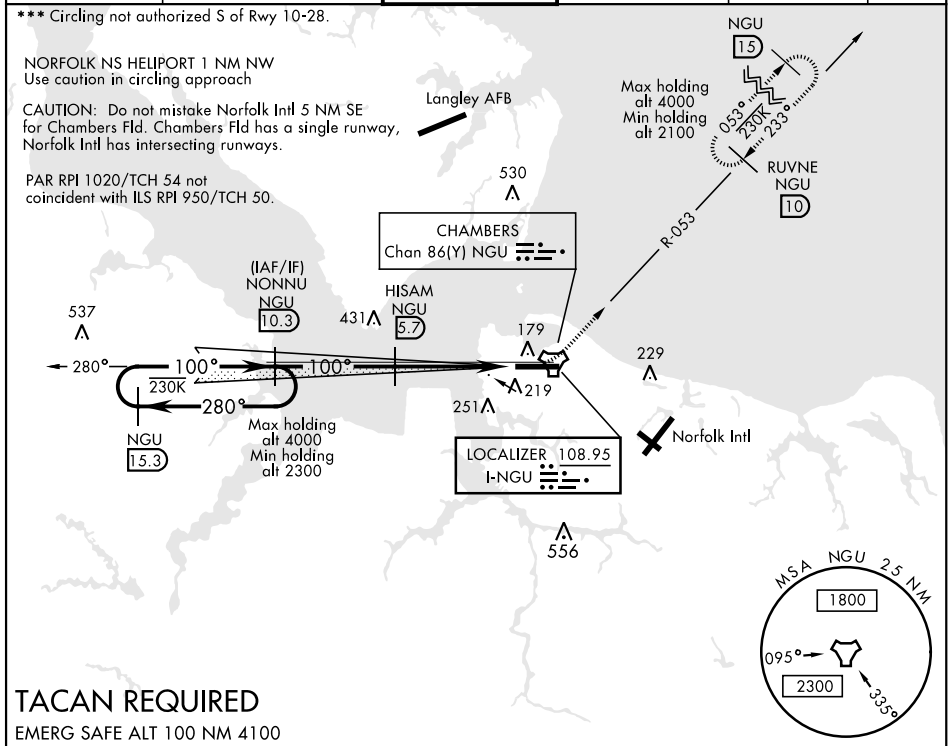
NORFOLK NS (CHAMBERS FIELD) (KNGU)

▼ * When ALS inop, increase vis to ¾ mile.
 ** When ALS inop, increase CAT AB vis to 1 mile, CAT CDE vis to 1½ miles.

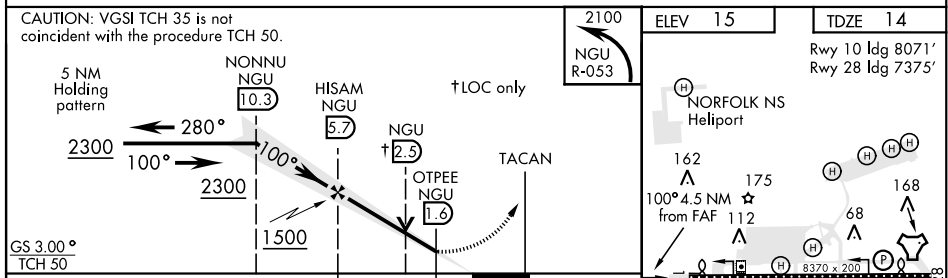
ALSF-2

MISSED APPROACH: Climbing left turn to 2100 via NGU TACAN R-053 to RUVNE and hold.

ATIS 118.425 342.0	NORFOLK APP CON 118.9 353.7	CHAMBERS TOWER 124.3 379.15	GND CON 121.8 370.85	CLNC DEL 120.7 339.8	ASR/PAR
------------------------------	---------------------------------------	---------------------------------------	--------------------------------	--------------------------------	---------



TACAN REQUIRED
EMERG SAFE ALT 100 NM 4100



	ELEV 15		TDZE 14		
	5 NM Holding pattern		Rwy 10 ldg 8071' Rwy 28 ldg 7375'		
CATEGORY	A	B	C	D	E
S-ILS 10 *	214-½		200	(200-½)	
S-LOC 10 **	480-½	466 (500-½)	480-1	466	(500-1)
CIRCLING ***	500-1 485 (500-1)	560-1 545 (600-1)	560-1½ 545 (600-1½)	580-2 545 (600-2)	700-2½ 685 (700-2½)

NORFOLK, VIRGINIA 36° 56'N-76° 17'W NORFOLK NS (CHAMBERS FIELD) (KNGU)

Amtd 6 26MAR20

ILS or LOC/DME RWY 10

NE-3, 21 MAY 2020 to 18 JUN 2020

NE-3, 21 MAY 2020 to 18 JUN 2020