

HI-TACAN RWY 28

TACAN NGU Chan 86Y	APCH CRS 290°	Rwy ldg 7375 TDZE 14 Arprt Elev 15	JAL-290 [USN]	NORFOLK NS (CHAMBERS FIELD) (KNGU)
------------------------------	-------------------------	---	---------------	------------------------------------

V * When ALS inop, increase CAT CDE vis to 1½ miles.
 ** Circling not authorized S of Rwy 10-28.

SSALS

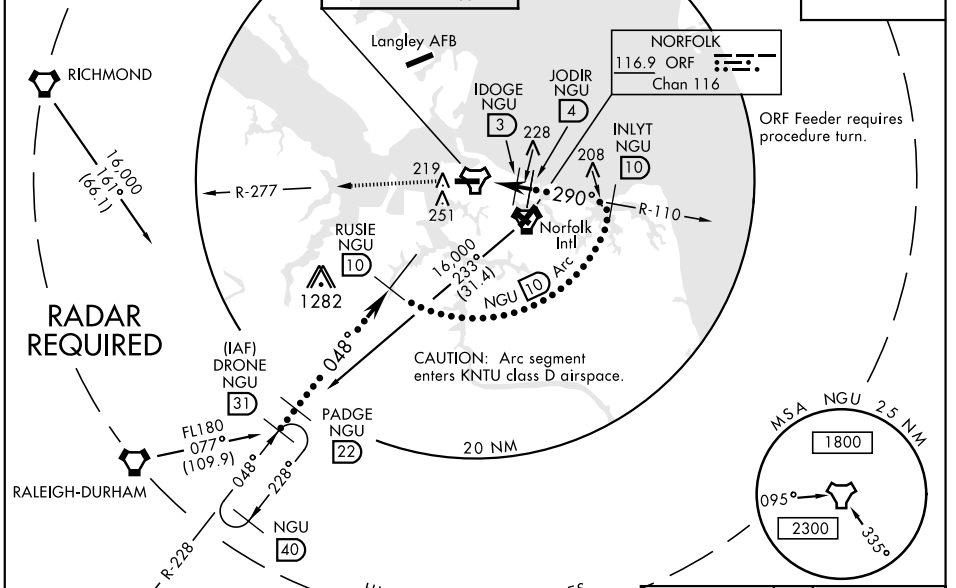
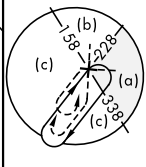
MISSED APPROACH: Climb to 2300 on NGU TACAN R-277 then as directed by ATC.

ATIS 118.425 342.0	NORFOLK APP CON 118.9 353.7	CHAMBERS TOWER 124.3 379.15	GND CON 121.8 370.85	ASR/PAR
------------------------------	---------------------------------------	---------------------------------------	--------------------------------	---------

CAUTION:
Do not mistake Norfolk Intl 5 NM SE for Chambers Fld. Chambers Fld. has a single rwy, Norfolk Intl has int runways.

NORFOLK NS HELIPORT 1 NM NW
Use caution in circling approach.

FAC 464 ft from rwy CL at 3000 ft from thld.



	ELEV 15	TDZE 14
	Rwy 10 ldg 8071' Rwy 28 ldg 7375'	
	NORFOLK NS Heliport	
	HIRL Rwy 10-28 REIL Rwy 10-28 TDZL/CL Rwy 10-28	
2300	↑	DRONE NGU R-228
↑	NGU R-277	
TACAN	KLUMM 0.3	IDOGE 3
	JODIR 4	INLYT R-110 10
	RUSIE R-228 10	PADGE 22
	16,000	11,000
	3000	2300
	980	1300
	290°	048°
	2.92°	TCH 38
CATEGORY	C	D
S-28 *	460-1	446 (500-1)
CIRCLING **	560-1½ 545 (600-1½)	580-2 565 (600-2)
	700-2½ 685 (700-2½)	

NE-3, 21 MAY 2020 to 18 JUN 2020

NE-3, 21 MAY 2020 to 18 JUN 2020