

HI-TACAN RWY 10

TACAN Chan 86Y	APCH CRS 097°	Rwy ldg 8071' TDZE 14 Arpt Elev 15
--------------------------	-------------------------	---

JAL-290 [USN]

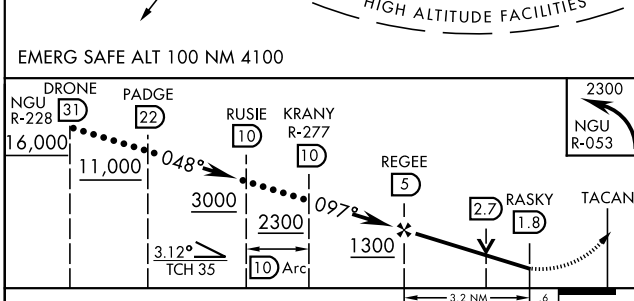
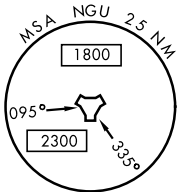
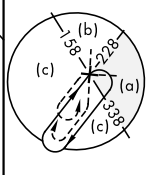
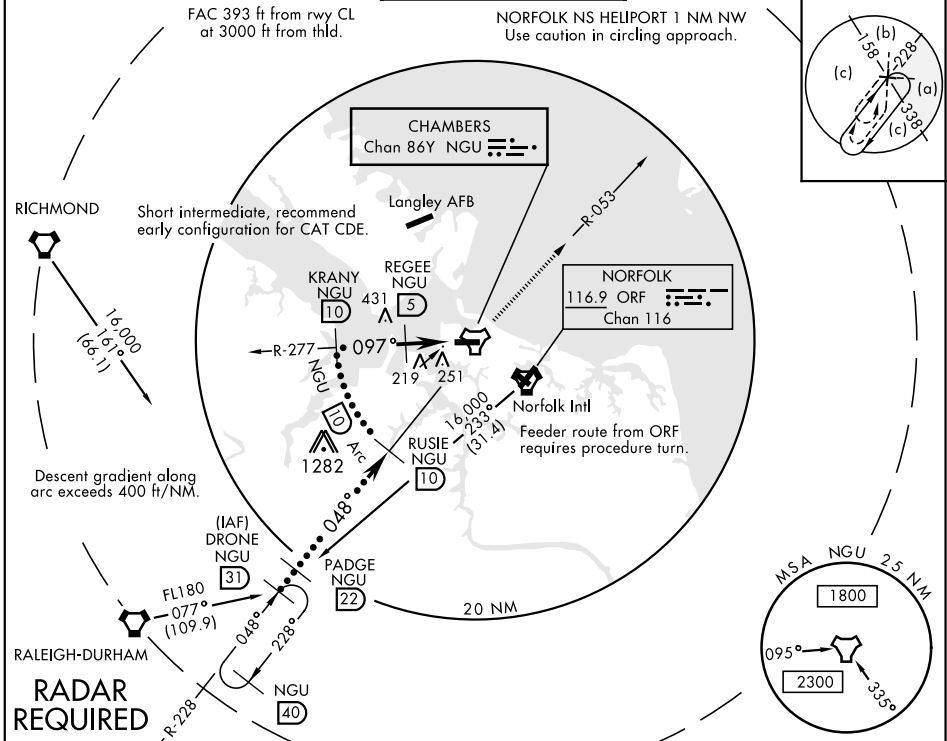
NORFOLK NS (CHAMBERS FIELD) (KNGU)

▼ * When ALS inop, increase CAT CDE vis to 1½ miles.
** Circling not authorized S of Rwy 10-28.



MISSED APPROACH: Climbing left turn to 2300 on NGU TACAN R-053 then as directed by ATC.

ATIS 118.425 342.0	NORFOLK APP CON 118.9 353.7	CHAMBERS TOWER 124.3 379.15	GND CON 121.8 370.85	ASR/PAR
------------------------------	---------------------------------------	---------------------------------------	--------------------------------	---------



ELEV 15	TDZE 14
Rwy 10 ldg 8071' Rwy 28 ldg 7375'	

NORFOLK NS Heliport

162

175

112

168

68

8370 x 200

TWR 131

163

097° to TACAN

HIRL Rwy 10-28
REIL Rwy 10-28
TDZL/CL Rwy 10-28

CATEGORY	C	D	E
S-10 *	520-1	506 (600-1)	
CIRCLING **	560-1½ 545 (600-1½)	580-2 565 (600-2)	700-2½ 685 (700-2½)

HI-TACAN RWY 10

NE-3, 21 MAY 2020 to 18 JUN 2020

NE-3, 21 MAY 2020 to 18 JUN 2020