


WAAS CH 69602 W10A	APP CRS 098°	Rwy Idg TDZE Apt Elev	7000 198 257
--	------------------------	-----------------------------	---

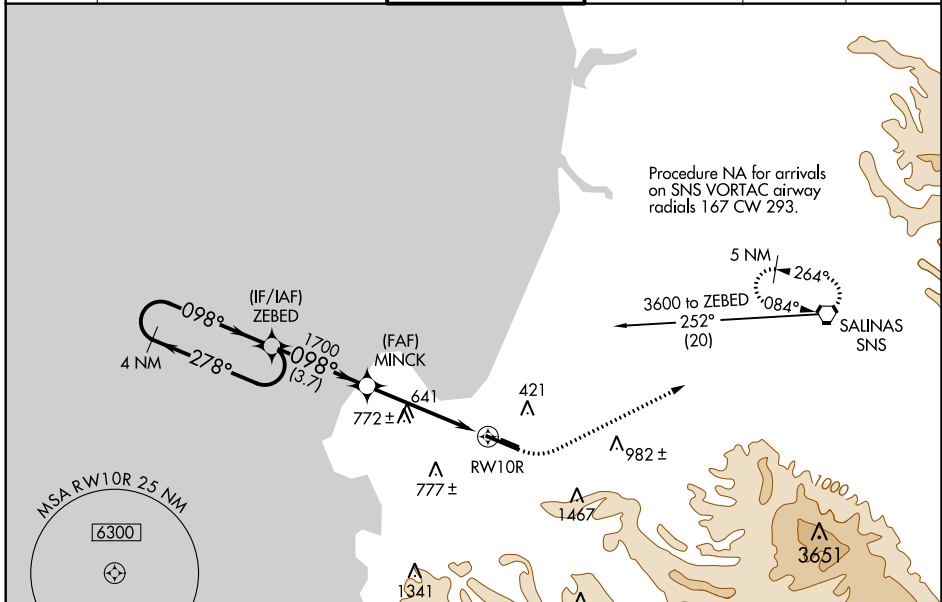
RNAV (GPS) RWY 10R

MONTEREY RGNL (MRY)

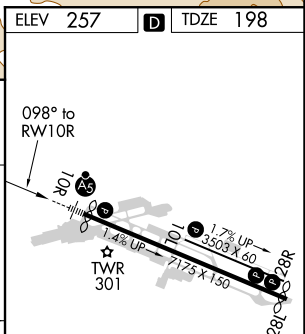
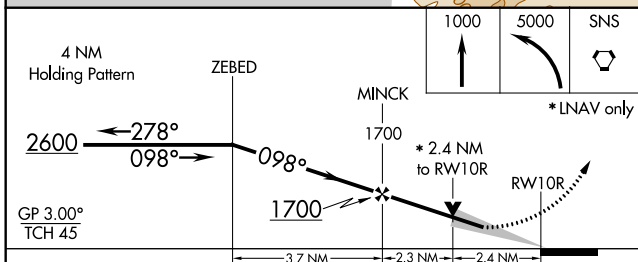
⚠ DME/DME RNP-0.3 NA. Circling NA south of Rwy 10R-28L.
⚠ For uncompensated Baro-VNAV systems, LNAV/VNAV NA below 0°C (32°F) or above 54°C (130°F). For inop MALSRS, increase LPV visibility all Cats to 1½ mile, LNAV/VNAV visibility all Cats to 2½ miles, and LNAV Cat C/D visibility to 2½ miles.

MALSRS

MISSED APPROACH: Climb to 1000 then climbing left turn to 5000 direct SNS VORTAC and hold, continue climb-in-hold to 5000.

ATIS 119.25	NORCAL APP CON 133.0 251.15 (360°-150°) 127.15 307.125 (151°-359°)	MONTEREY TOWER ★ 118.4 (CTAF) 0 257.8	GND CON 120.875 348.6	CLNC DEL 135.45	UNICOM 122.95
-----------------------	--	--	---------------------------------	---------------------------	-------------------------



ELEV 257	D TDZE 198
----------	-------------------



CATEGORY	A	B	C	D
LPV DA		718-1½	520 (500-1½)	
LNAV/VNAV DA		789-1¾	591 (600-1¾)	
LNAV MDA	980/24 782 (800-½)	980/40 782 (800-¾)	980-1¾	782 (800-1¾)
C CIRCLING	980-1 723 (800-1)	980-1¼ 723 (800-1¼)	1280-3 1023 (1100-3)	1820-3 1563 (1600-3)

MIRL Rwy 10L-28R
 HIRL Rwy 10R-28L **Ⓛ**
 REIL Rwy 28L **Ⓛ**
 REIL Rwy 10L and 28R

SW-2, 21 MAY 2020 to 18 JUN 2020

SW-2, 21 MAY 2020 to 18 JUN 2020