

| | | | |
|---------------|-------------|--------------|-------------|
| LOC/DME I-MTB | APP CRS | Rwy ldg TDZE | 7000 |
| 110.7 | 278° | 257 | |
| Chan 44 | | Apt Elev | 257 |

LOC RWY 28L

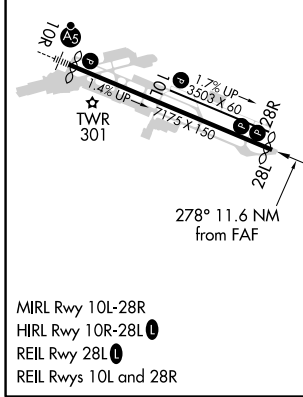
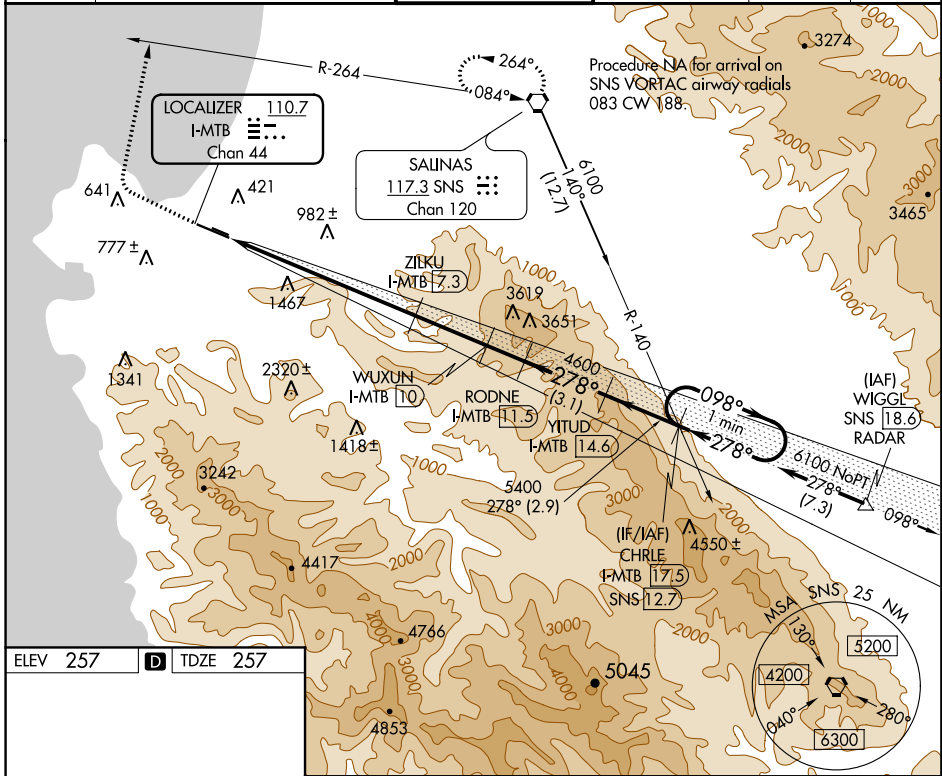
MONTEREY RGNL (MR Y)

DME required. DME or RADAR required for procedure entry.

▼ Circling NA south of Rwy 10R-28L. Rwy 28L helicopter visibility reduction below 3/4 SM NA.

▲ MISSED APPROACH: Climb to 3000 then climbing right turn to 5000 on heading 360° and SNS VORTAC R-264 to SNS VORTAC and hold.

| | | | | | |
|---------------|--|-----------------------------|----------------------|---------------|---------------|
| ATIS | NORCAL APP CON | MONTEREY TOWER★ | GND CON | CLNC DEL | UNICOM |
| 119.25 | 133.0 251.15 (360°-150°) 127.15 307.125 (151°-359°) | 118.4 (CTAF) 0 257.8 | 120.875 348.6 | 135.45 | 122.95 |



| | | | | | |
|----------|-------------------|-----------|--------------------|-------------|---|
| ELEV 257 | D TDZE 257 | | | | |
| ↑ | hdg 360° | SNS R-264 | SNS | CHRLE | YITUD I-MTB [17.5] One Minute Holding Pattern |
| | | | WUXUN I-MTB [11.5] | | |
| | | | ZILKU I-MTB [7.3] | | |
| | | | I-MTB [0.1] | I-MTB [4.1] | I-MTB [17.5] |
| | | | 3020 | 4060 | 5400 |
| | | | 4.2 NM | 3.2 NM | 2.7 NM |
| | | | 1.5 NM | 3.1 NM | 2.9 NM |

| | | | | |
|-------------------|---------------------------|---------------------------|--------|---------------|
| CATEGORY | A | B | C | D |
| S-LOC 28L | 1860-1¼ 1603 (1700-1¼) | 1860-1½ 1603 (1700-1½) | 1860-3 | 1603 (1700-3) |
| C CIRCLING | 1860-1¼ 1603 (1700-1¼) | 1860-1½ 1603 (1700-1½) | 1860-3 | 1603 (1700-3) |

SW-2, 21 MAY 2020 to 18 JUN 2020

SW-2, 21 MAY 2020 to 18 JUN 2020