

LOC/DME I-MRY 110.7 Chan 44	APP CRS 098°	Rwy ldg 7000 TDZE 198 Apt Elev 257
---	------------------------	---

ILS or LOC RWY 10R

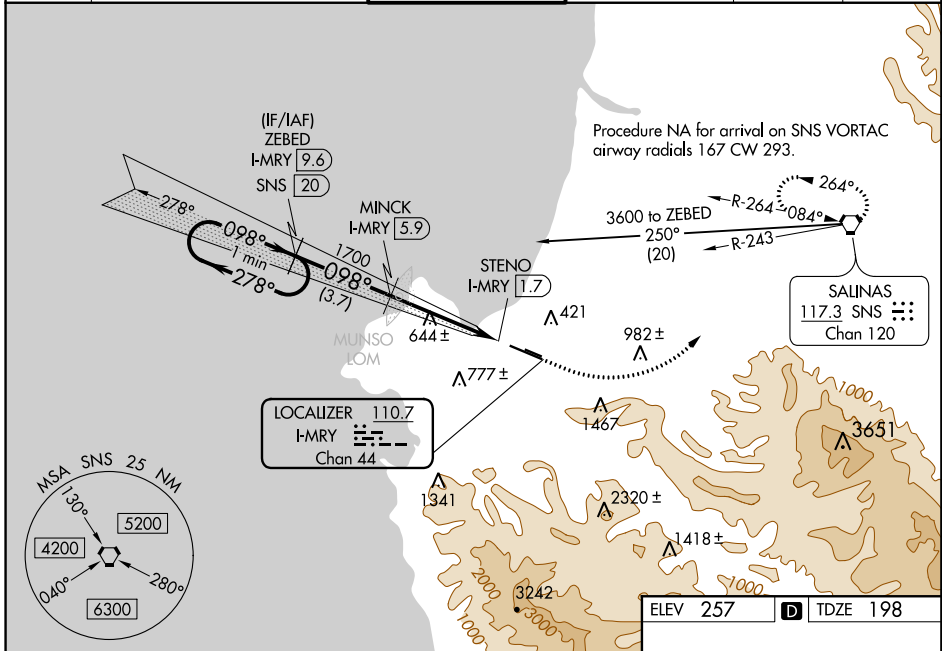
MONTEREY RGNL (MRY)

DME required for procedure entry.

MAJSLR **45**

MISSED APPROACH: Climb to 600 then climbing left turn to 5000 on heading 030° and on SNS VORTAC R-243 to SNS VORTAC and hold, continue climb-in-hold to 5000. # Missed approach requires minimum climb of 265 feet per NM to 1360.

ATIS 119.25	NORCAL APP CON 133.0 251.15 (360°-150°) 127.15 307.125 (151°-359°)	MONTEREY TOWER * 118.4 (CTAF) 257.8	GND CON 120.875 348.6	CLNC DEL 135.45	UNICOM 122.95
-----------------------	--	---	---------------------------------	---------------------------	-------------------------



ILS unusable from 0.5 NM inbound.

One Minute Holding Pattern

ZEBED I-MRY [9.6]
MINCK I-MRY [5.9]

600
5000
hdg 030°

SNS R-243

2600 ← 278°
098° →

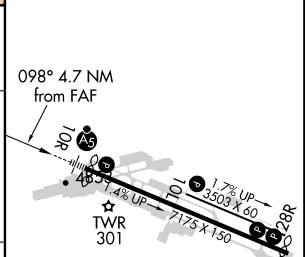
1700

*I-MRY [3.4]
*LOC only

STENO I-MRY [1.7]

GS 3.00°
TCH 45

3.7 NM | 2.5 NM | 1.7 NM | 0.5



CATEGORY	A	B	C	D
S-ILS 10R#		398/24	200 (200-½)	
S-ILS 10R		583/35	385 (400-⅝)	
S-LOC 10R	920/24	722 (700-½)	920-1⅝	722 (700-1⅝)
CIRCLING	920-1	663 (700-1)	1280-3 1023 (1100-3)	1820-3 1563 (1600-3)

MIRL Rwy 10L-28R
HIRL Rwy 10R-28L
REIL Rwy 28L
REIL Rwy 10L and 28R

SW-2, 21 MAY 2020 to 18 JUN 2020

SW-2, 21 MAY 2020 to 18 JUN 2020