

APP CRS	Rwy Idg	9501
117°	TDZE	3200
	Apt Elev	3206

RNAV (RNP) Z RWY 12

MISSOULA INTL (MISO)

RNP AR apch.

⚠ For uncompensated Baro-VNAV systems, LNAV/VNAV NA below -21° C (-6°F) or above 43°C (109°F).

⚠ For inop ALS, increase RNP 0.12 all Cats visibility to RVR 6000. For inop ALS, increase RNP 0.30 all Cats visibility to 2½ SM. When local weather not received, procedure NA.

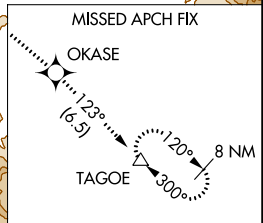
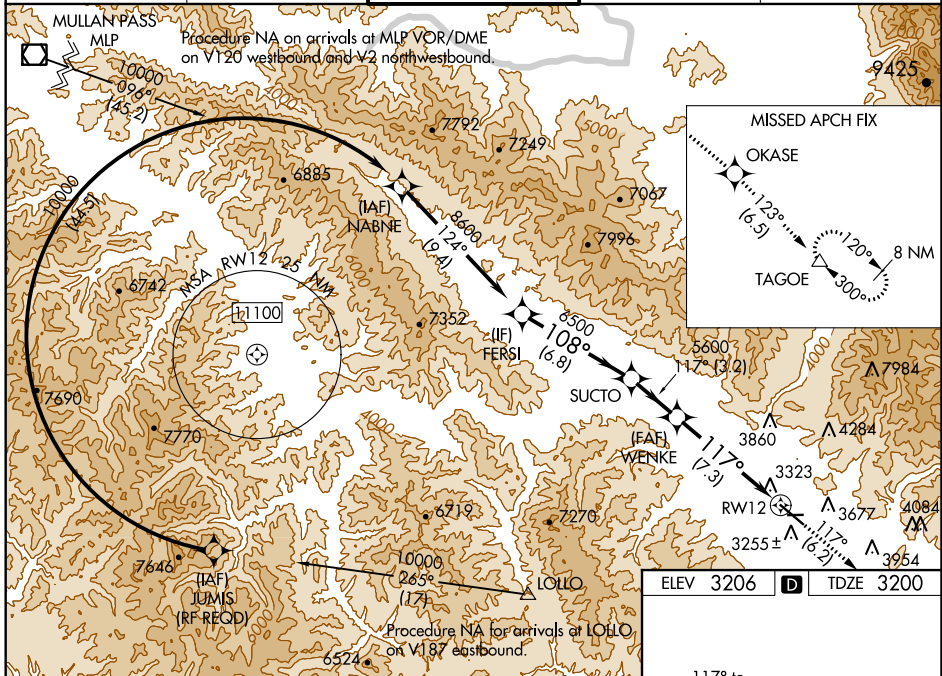
MALS

MISSED APPROACH: Climb to 13000 on track 117° to OKASE and on track 123° to TAGOE and hold, continue climb-in-hold to 13000.

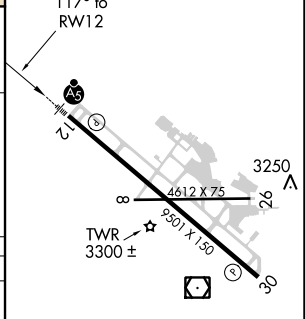
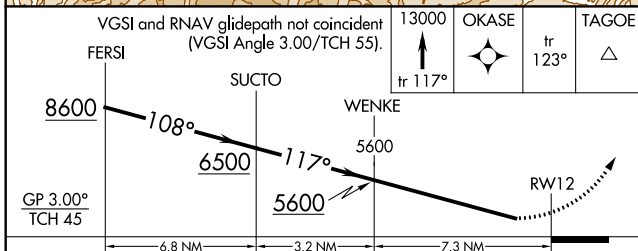
*Missed approach requires minimum climb of 350 feet per NM to 8300; if unable to meet climb gradient, see RNAV (GPS) Y RWY 12.

#Missed approach requires minimum climb of 425 feet per NM to 8300.

ATIS 126.65	SPOKANE APP CON * 124.9 298.95	MISSOULA TOWER * 118.4 (CTAF) 0 377.175	GND CON 121.9	UNICOM 122.95
-----------------------	--	---	-------------------------	-------------------------



ELEV 3206	D	TDZE 3200
-----------	----------	-----------



CATEGORY	A	B	C	D
RNP 0.12 DA#	3518/40		318 (400-¾)	
RNP 0.30 DA*	3880-2		680 (700-2)	

AUTHORIZATION REQUIRED

RLS Rwy 30
REIL Rwy 30
MIRL Rwy 8-26
HIRL Rwy 12-30

NW-1, 21 MAY 2020 to 18 JUN 2020

NW-1, 21 MAY 2020 to 18 JUN 2020