

APP CRS	Rwy Idg	9501
298°	TDZE	3206
	Apt Elev	3206

RNAV (RNP) RWY 30

MISSOULA INTL (MISO)

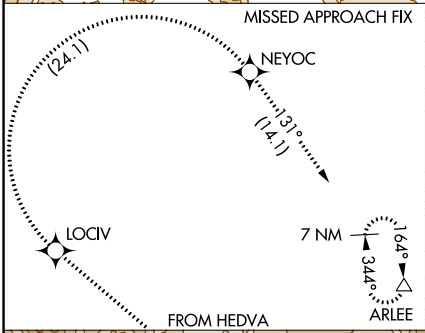
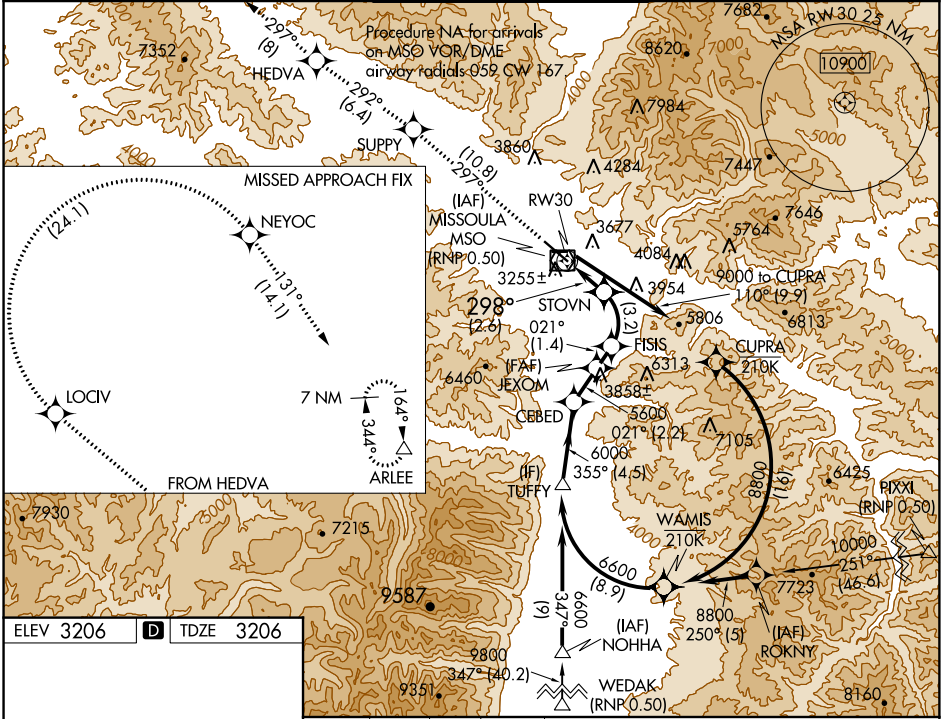
RNP AR APCH, RF required.

V For uncompensated Baro-VNAV systems, procedure NA below -21°C (-5°F) or above 43°C (109°F). When local altimeter setting not received, procedure NA.

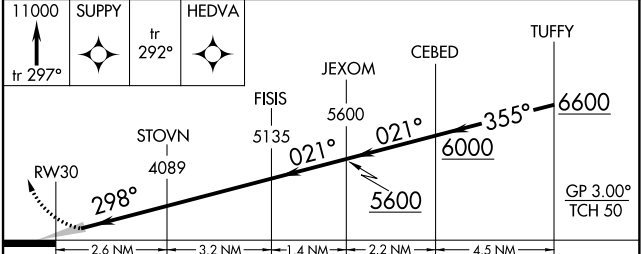
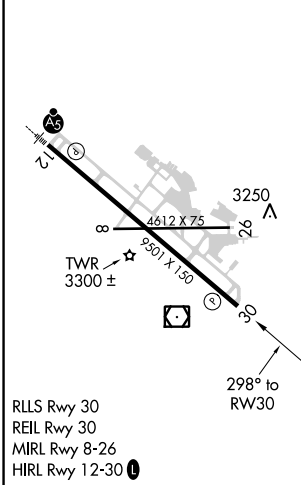
A -17°C

MISSED APPROACH: Climb to 11000 on track 297° to SUPPY and on track 292° to HEDVA and on track 297° to LOCV, then right turn to NEYOC and on track 131° to ARLEE and hold. *Misted approach requires minimum climb of 215 feet per NM to 5000.

ATIS	SPOKANE APP CON *	MISSOULA TOWER *	GND CON	UNICOM
126.65	124.9 298.95	118.4 (CTAF) 377.175	121.9	122.95



ELEV 3206	D	TDZE 3206
-----------	----------	-----------



CATEGORY	A	B	C	D
RNP 0.30 DA *	3524-1 318 (400-1)			
RNP 0.30 DA	3582-1¼ 376 (400-1¼)			

AUTHORIZATION REQUIRED

NW-1, 21 MAY 2020 to 18 JUN 2020

NW-1, 21 MAY 2020 to 18 JUN 2020