

| | | |
|--|------------------------|---|
| WAAS CH 86500 W01A | APP CRS 011° | Rwy Idg 9013 TDZE 289 Apt Elev 298 |
|--|------------------------|---|

RNAV (GPS) RWY 1

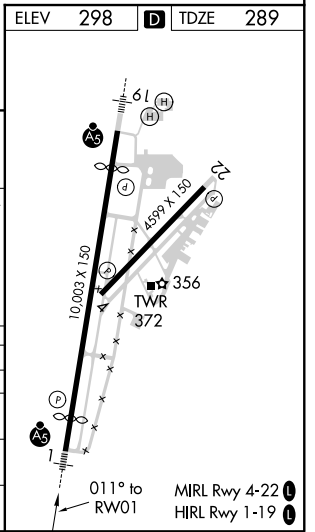
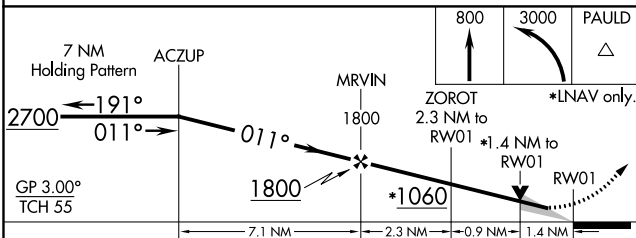
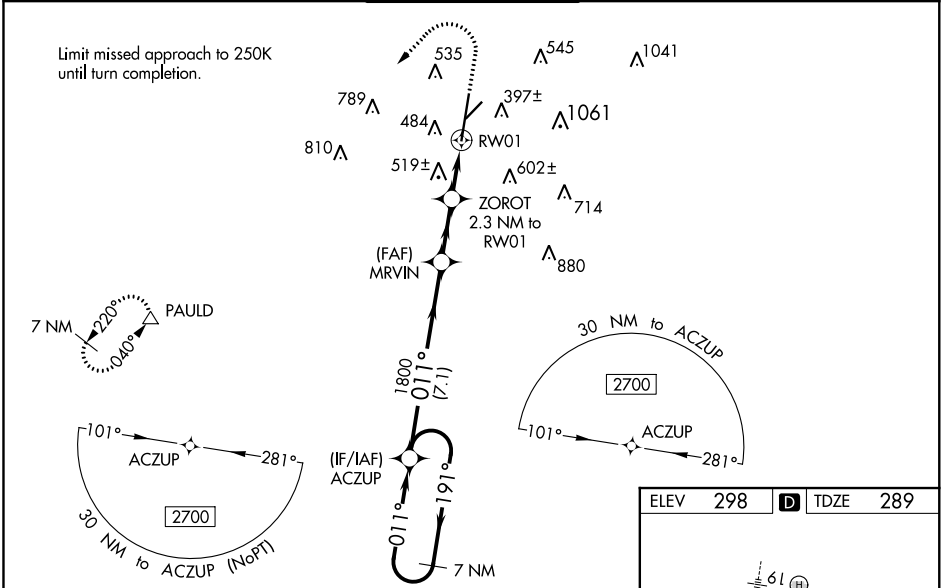
KEY FIELD (MEI)

For uncompensated Baro-VNAV systems, LNAV/VNAV NA below -8°C (18°F) or above 54°C (130°F). Circling NA southeast of Rwy 1 and 22. DME/DME RNP-0.3 NA. When local altimeter setting not received, use Hattiesburg-Laurel Rgnl altimeter setting and increase all DA 138 feet and all MDA 140 feet, LPV all Cats visibility to RVR 3100, LNAV/VNAV all Cats and LNAV Cats C, D, and E visibilities to 1 $\frac{1}{2}$ mile, and Circling Cat C visibility $\frac{1}{2}$ mile and Cat D visibility $\frac{1}{4}$ mile. For inop MALSRR increase LPV Cat E to RVR 4000, LNAV/VNAV Cat E visibility to RVR 6000, and LNAV Cat E visibility to 1 $\frac{3}{8}$ mile. For inop MALSRR when using Hattiesburg-Laurel Rgnl altimeter setting, increase LPV all Cats visibility to RVR 5000, LNAV/VNAV Cat E visibility to 1 $\frac{1}{2}$ mile, and LNAV Cat E visibility to 1 $\frac{3}{4}$ mile. VDP and Baro-VNAV NA when using Hattiesburg-Laurel Rgnl altimeter setting. Night landing: Rwy 22 NA. ** RVR 1800 authorized with use of FD or AP or HUD to DA, NA when using Hattiesburg-Laurel Rgnl altimeter setting.

MALSRR

MISSED APPROACH:
Climb to 800 then climbing left turn to 3000 direct PAULD and hold.

| | | | | |
|--------------------------------|--|--|-------------------------------|-------------------------|
| ATIS 126.475 291.675 | MERIDIAN APP CON * 120.5 269.325 | KEY TOWER * 133.975 (CTAF) 257.8 | GND CON 121.9 348.6 | UNICOM 122.95 |
|--------------------------------|--|--|-------------------------------|-------------------------|



| CATEGORY | A | B | C | D | E |
|-------------------|----------------------|---------------------------|---|--|-----------------------|
| LPV DA ** | 489/24 | | 200 (200- $\frac{1}{2}$) | | |
| LNAV/VNAV DA | 709/47 | | 420 (500-1) | | |
| LNAV MDA | 780/24 | 491 (500- $\frac{1}{2}$) | 780/50 | | 491 (500-1) |
| C CIRCLING | 860-1 562 (600-1) | 880-1 582 (600-1) | 960-1 $\frac{3}{4}$ 662 (700-1 $\frac{3}{4}$) | 1120-2 $\frac{3}{4}$ 822 (900-2 $\frac{3}{4}$) | 1120-3 822 (900-3) |

SC-4, 21 MAY 2020 to 18 JUN 2020

SC-4, 21 MAY 2020 to 18 JUN 2020