

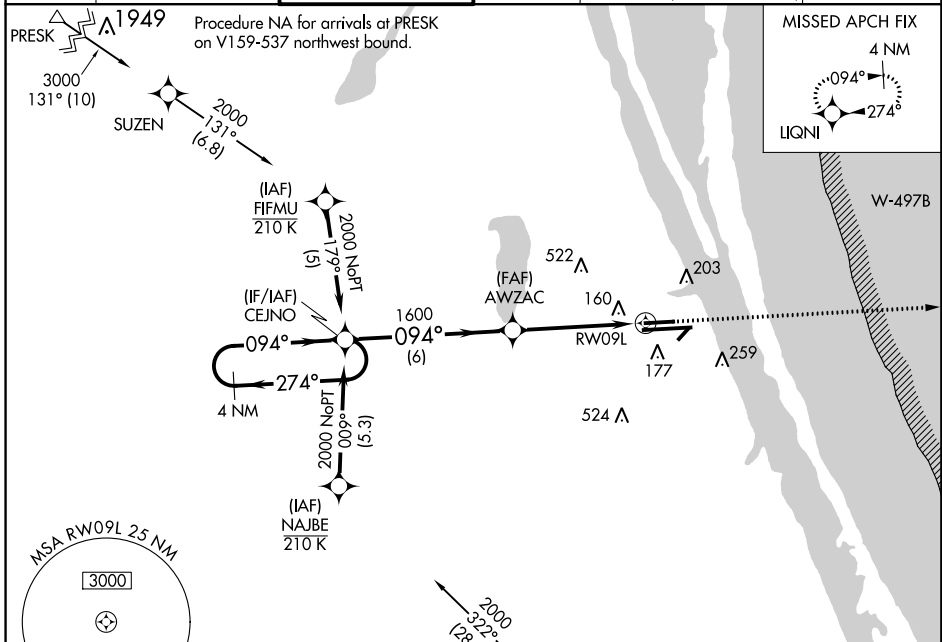
WAAS CH 65601 W09A	APP CRS 094°	Rwy Idg TDZE 33 Apt Elev 33	6000
--	------------------------	---	-------------

RNAV (GPS) RWY 9L

MELBOURNE INTL (MLB)

RNP APCH.		MISSED APPROACH: Climb to 2000 direct LIQNI and hold.	
<p>▼ For uncompensated Baro-VNAV systems, LNAV/VNAV NA below -1.5°C (5°F) or above 54°C (130°F). Helicopter visibility reduction below ¾ SM NA.</p>			

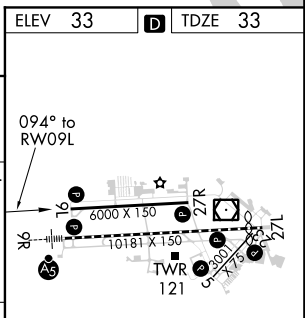
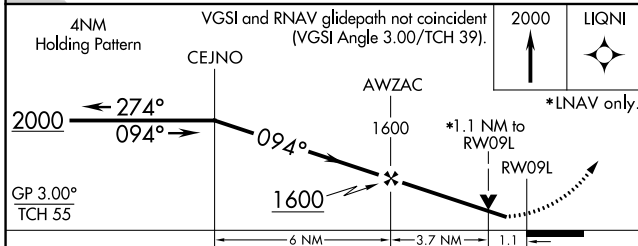
ATIS 132.55	ORLANDO APP CON 132.65 281.425	MELBOURNE TOWER * 118.2 (CTAF) 257.8	GND CON 121.9	CNLC DEL 121.9 (when twr closed)	UNICOM 122.95
-----------------------	--	--	-------------------------	---	-------------------------



SE-3, 21 MAY 2020 to 18 JUN 2020

SE-3, 21 MAY 2020 to 18 JUN 2020

ELEV 33	TDZE 33
---------	---------



CATEGORY	A	B	C	D
LPV DA	283-¾		250 (300-¾)	
LNAV/VNAV DA	467-1¾		434 (500-1¾)	
LNAV MDA	420-1 387 (400-1)		420-1½ 387 (400-1½)	
C CIRCLING	500-1 467 (500-1)	560-1 527 (600-1)	680-1¾ 647 (700-1¾)	880-2¾ 847 (900-2¾)

