

WAAS CH <b>50101</b> <b>W27A</b>	APP CRS <b>274°</b>	Rwy Idg TDZE Apt Elev	<b>6000</b> <b>32</b> <b>33</b>
--	------------------------	-----------------------------	---------------------------------------

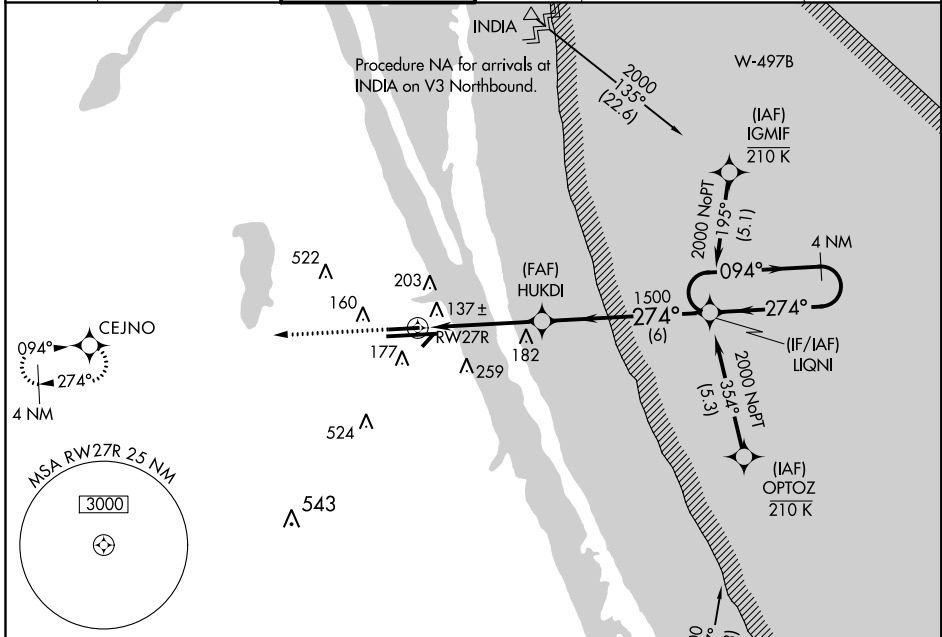
# RNAV (GPS) RWY 27R

MELBOURNE INTL (MLB)

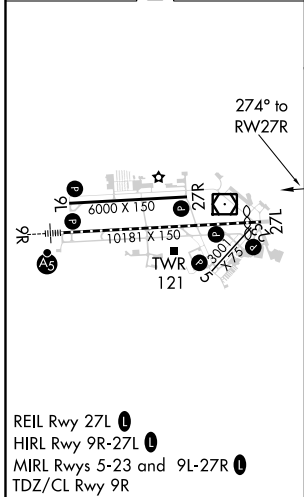
RNP APCH.  
 ⚠ For uncompensated Baro-VNAV systems, LNAV/VNAV NA below -15°C (5°F) or above 54°C (130°F).

MISSED APPROACH: Climb to 2000 direct CEJNO and hold.

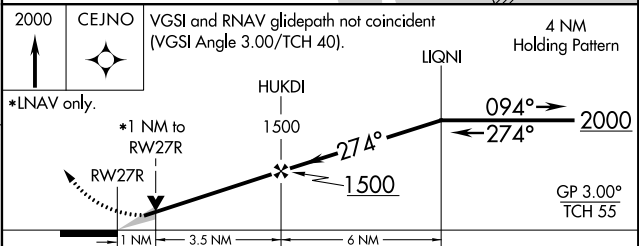
ATIS <b>132.55</b>	ORLANDO APP CON <b>132.65 281.425</b>	MELBOURNE TOWER ★ <b>118.2 (CTAF) 0 257.8</b>	GND CON <b>121.9</b>	CINC DEL <b>121.9 132.65</b> (when twr closed)	UNICOM <b>122.95</b>
-----------------------	--	--	-------------------------	--	-------------------------



ELEV 33	<b>D</b>	TDZE 32
---------	----------	---------



Procedure NA for arrivals on TRV VORTAC airway radials 325 CW 350.



CATEGORY	A	B	C	D
LPV DA		232-3/4	200 (200-3/4)	
LNAV/VNAV DA		443-1 3/8	411 (500-1 3/8)	
LNAV MDA		400-1	368 (400-1)	
<b>C</b> CIRCLING	500-1 467 (500-1)	560-1 527 (600-1)	680-1 3/4 647 (700-1 3/4)	880-2 3/4 847 (900-2 3/4)

SE-3, 21 MAY 2020 to 18 JUN 2020

SE-3, 21 MAY 2020 to 18 JUN 2020