

REDSTONE SIX ARRIVAL

LOUISVILLE, KENTUCKY

LOUISVILLE APP CON
 134.152 288.325
 LOUISVILLE INTL D-ATIS
 118.725
 BOWMAN FIELD ATIS
 120.025

ROSEWOOD
 117.5 ROD
 Chan 122
 N40°17.27'-W084°02.59'
 L-27, H-10

CINCINNATI
 117.3 CVG
 Chan 120
 N39°00.96'-W084°42.20'
 L-26-27

SHIRT
 N39°37.80'
 W83°34.89'

APPLETON
 116.7 APE
 Chan 114
 N40°09.06'-W082°35.30'
 L-29, H-10

WARSA
 N38°45.80'
 W84°56.89'

NERVE
 N38°36.94'
 W85°05.42'

RDSTN
 N38°23.38'
 W85°18.38'

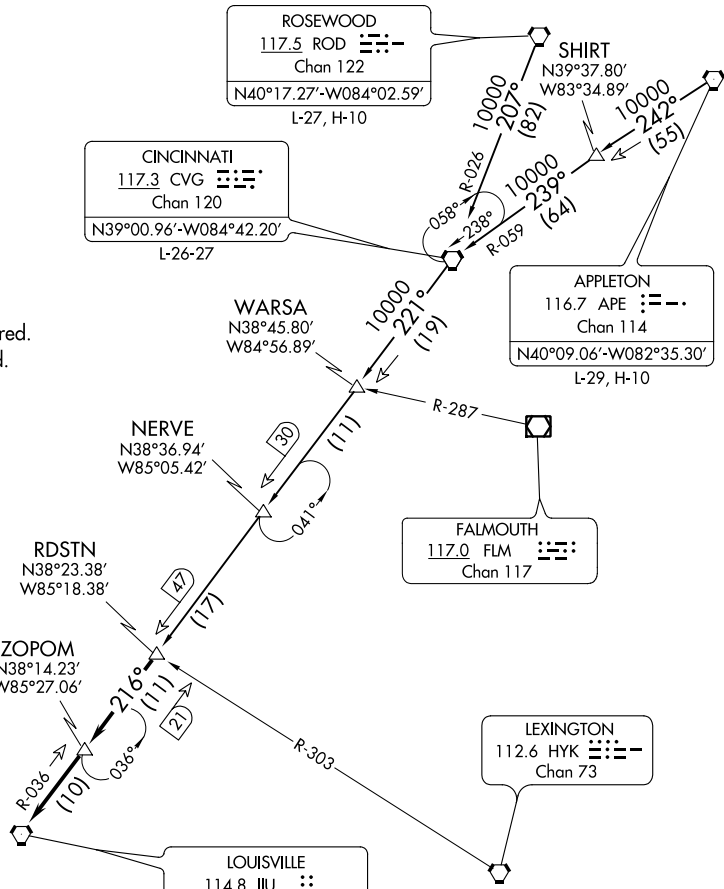
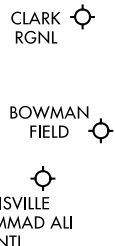
ZOPOM
 N38°14.23'
 W85°27.06'

FALMOUTH
 117.0 FLM
 Chan 117

LEXINGTON
 112.6 HYK
 Chan 73

LOUISVILLE
 114.8 IUU
 Chan 95
 N38°06.21'-W085°34.65'

NOTE: RADAR required.
 NOTE: DME required.



NOTE: Chart not to scale.

ARRIVAL ROUTE DESCRIPTION

APPLETON TRANSITION (APE.RDSTN6): From over APE VORTAC via APE R-242 and CVG R-059 to CVG VORTAC, then via CVG R-221 to RDSTN. Thence....

CINCINNATI TRANSITION (CVG.RDSTN6): From over CVG VORTAC via CVG R-221 to RDSTN. Thence....

ROSEWOOD TRANSITION (ROD.RDSTN6): From over ROD VORTAC via ROD R-207 and CVG R-026 to CVG VORTAC, then via CVG R-221 to RDSTN. Thence....

....from over RDSTN on IUU R-036 to ZOPOM, then on IUU R-036 to IUU VORTAC.
 Expect radar vectors to final approach after ZOPOM.

REDSTONE SIX ARRIVAL

LOUISVILLE, KENTUCKY

SE-1, 21 MAY 2020 to 18 JUN 2020

SE-1, 21 MAY 2020 to 18 JUN 2020