
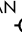



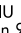
DARBY SEVEN ARRIVAL

LOUISVILLE, KENTUCKY

LOUISVILLE APP CON
132.075 327.0
LOUISVILLE INTL D-ATIS
118.725
BOWMAN FIELD ATIS
120.025


CLARK RGNL 
BOWMAN FIELD 
LOUISVILLE 
MUHAMMAD ALI INTL

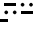
NOTE: RADAR required.
NOTE: DME required for LONDON and UNCKL Transitions.

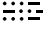
LOUISVILLE
114.8 IIIU 
Chan 95
N38° 06.21' - W85° 34.65'

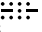
DARBY
N37° 39.26' - W84° 57.21'

UNCKL
N37° 28.88' - W84° 42.98'

LONDON
116.1 LOZ 
Chan 108
N37° 01.99' - W84° 06.60'
L-26

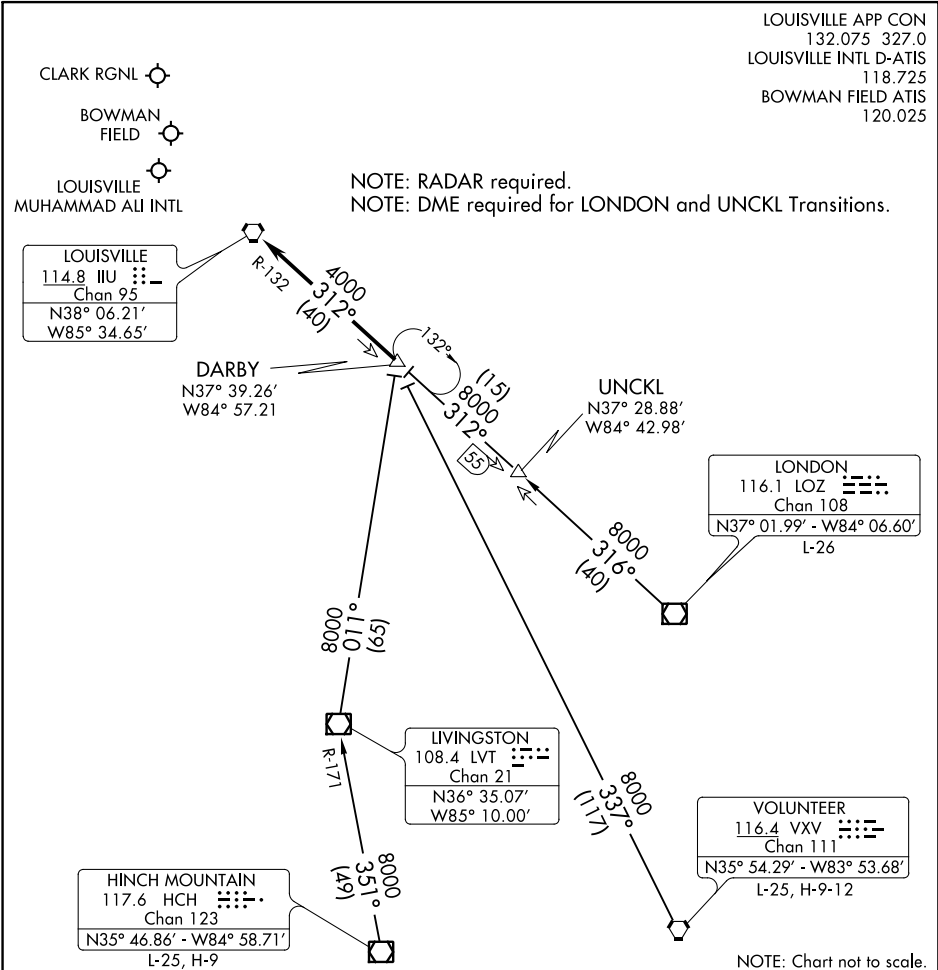
LIVINGSTON
108.4 LVT 
Chan 21
N36° 35.07' - W85° 10.00'

VOLUNTEER
116.4 VXV 
Chan 111
N35° 54.29' - W83° 53.68'
L-25, H-9-12

HINCH MOUNTAIN
117.6 HCH 
Chan 123
N35° 46.86' - W84° 58.71'
L-25, H-9

SE-1, 21 MAY 2020 to 18 JUN 2020

SE-1, 21 MAY 2020 to 18 JUN 2020



NOTE: Chart not to scale.

ARRIVAL ROUTE DESCRIPTION

HINCH MOUNTAIN TRANSITION (HINCH.DARBY7): From over HCH VOR/DME via HCH R-351 and LVT R-171 to LVT VOR/DME, then via LVT R-011 to DARBY INT. Thence. . . .

LONDON TRANSITION (LOZ.DARBY7): From over LOZ VOR/DME via LOZ R-316 to UNCKL INT, then via IIIU R-132 to DARBY INT. Thence. . . .

UNCKL TRANSITION (UNCKL.DARBY7): From over UNCKL INT via IIIU R-132 to DARBY INT. Thence. . . .

VOLUNTEER TRANSITION (VXV.DARBY7): From over VXV VORTAC via VXV R-337 to DARBY INT. Thence. . . .

. . . . from DARBY INT on IIIU R-132 to IIIU VORTAC. Expect radar vectors to final course.

DARBY SEVEN ARRIVAL

LOUISVILLE, KENTUCKY