

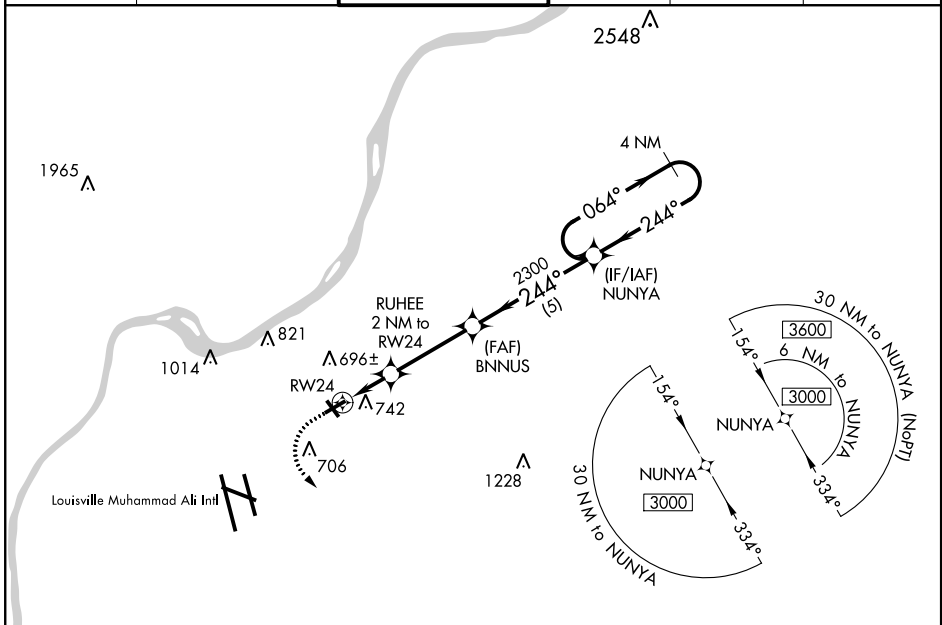
WAAS CH <b>58126</b> <b>W24A</b>	APP CRS <b>244°</b>	Rwy Idg TDZE Apt Elev	<b>3856</b> <b>545</b> <b>546</b>
--	------------------------	-----------------------------	---

# RNAV (GPS) RWY 24

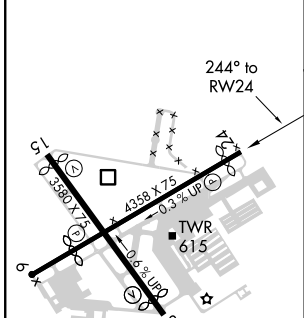
BOWMAN FIELD (LOU)

RNP APCH.	MISSED APPROACH: Climb to 1100 then climbing left turn to 3000 direct CAANT and hold.
<p><b>⚠</b> VDP NA with Louisville Muhammad Ali Intl altimeter setting. When local altimeter setting not received, use Louisville Muhammad Ali Intl altimeter setting. Rwy 24 helicopter visibility reduction below 3/4 SM NA. Circling Rwy 6, 15, 33 NA at night.</p>	

ATIS <b>124.15</b>	LOUISVILLE APP CON <b>132.075 327.0</b>	BOWMAN TOWER* <b>119.5 (CTAF) 257.625</b>	GND CON <b>121.8</b>	CLNC DEL <b>118.9</b>	UNICOM <b>122.95</b>
-----------------------	--	--	-------------------------	--------------------------	-------------------------



ELEV 546	<b>D</b>	TDZE 545
----------	----------	----------



1100	3000	CAANT	VGSI and RNAV glidepath not coincident (VGSI Angle 3.50/TCH 27).
*LNAV only		RUHEE 2 NM to RW24	BNNUS 2300
*1.1 NM to RW24		NUNYA 4 NM Holding Pattern	3000
RW24		1220*	2300
1.1 NM		0.9 NM	3.4 NM
		5 NM	
			GP 3.00° TCH 53

CATEGORY	A	B	C	D
LPV DA	830-7/8	285 (300-7/8)		NA
LNAV/VNAV	1025-1 1/8	480 (500-1 1/8)		NA
LNAV MDA	1000-1	455 (500-1)		NA
<b>C</b> CIRCLING	1060-1 514 (600-1)	1080-1 534 (600-1)		NA

SE-1, 21 MAY 2020 to 18 JUN 2020

SE-1, 21 MAY 2020 to 18 JUN 2020