

BLUBELL FOUR ARRIVAL

HOUSTON, TEXAS

SC-5, 21 MAY 2020 to 18 JUN 2020

ARRIVAL ROUTE DESCRIPTION

COLLEGE STATION TRANSITION (CLL.BLUBL4):
From over CLL VORTAC on CLL R-153 to BLUBL. Thence

ELIVR TRANSITION (ELIVR.BLUBL4): From over ELIVR on CLL R-334 to CLL VORTAC, then on CLL R-153 to BLUBL. Thence

JAYJO TRANSITION (JAYJO.BLUBL4): From over JAYJO on TNV R-266 to BLUBL. Thence

LEONA TRANSITION (LOA.BLUBL4): From over LOA VORTAC on LOA R-209 and CLL R-029 to CLL VORTAC, then on CLL R-153 to BLUBL. Thence

ILANO TRANSITION (ILO.BLUBL4): From over ILO VORTAC on ILO R-087 and CLL R-268 to CLL VORTAC, then on CLL R-153 to BLUBL. Thence

. . . . From over BLUBL on CLL R-153 to cross SNDAY at 9000, from SNDAY fly heading 153°. Expect vectors to final approach course at or prior to SNDAY.

CHAMBERS COUNTY

BAYTOWN

LA PORTE MUNI

WILLIAM P HOBBY

SUGAR LAND RGNL

HOUSTON SOUTHWEST

HOUSTON EXECUTIVE

HOUSTON

WEST HOUSTON

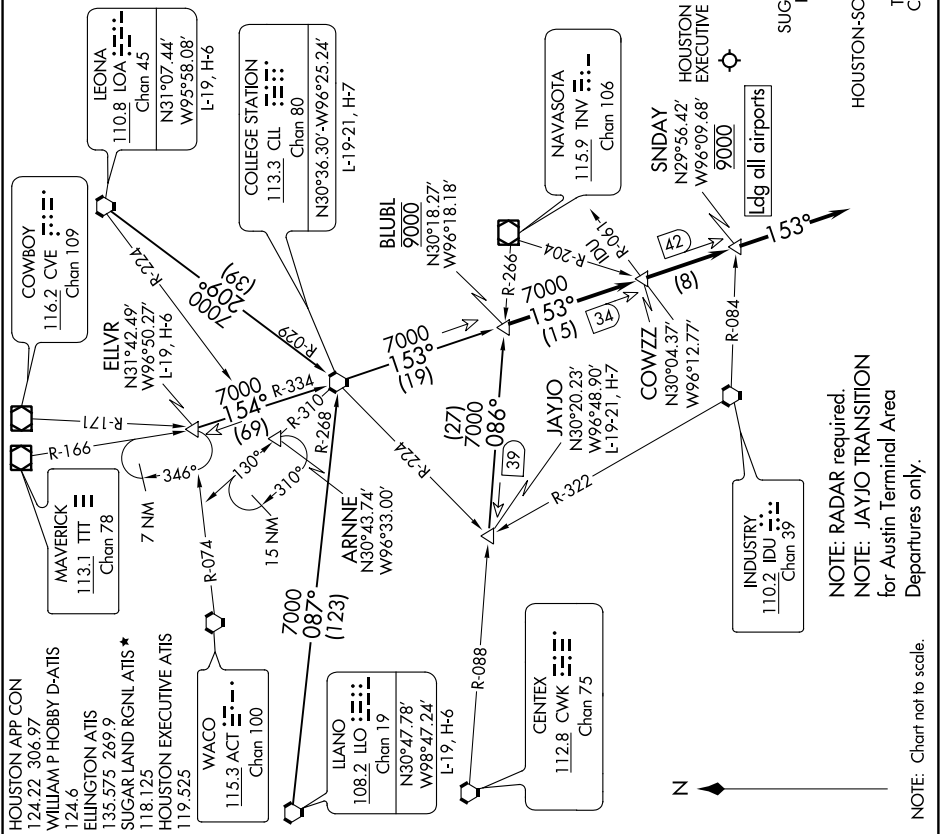
PEARLAND RGNL

TEXAS GULF COAST RGNL

ELINGTON

RWJ AIRPARK

SCHOLES INTL AT GALVESTON



SC-5, 21 MAY 2020 to 18 JUN 2020

BLUBELL FOUR ARRIVAL

HOUSTON, TEXAS