

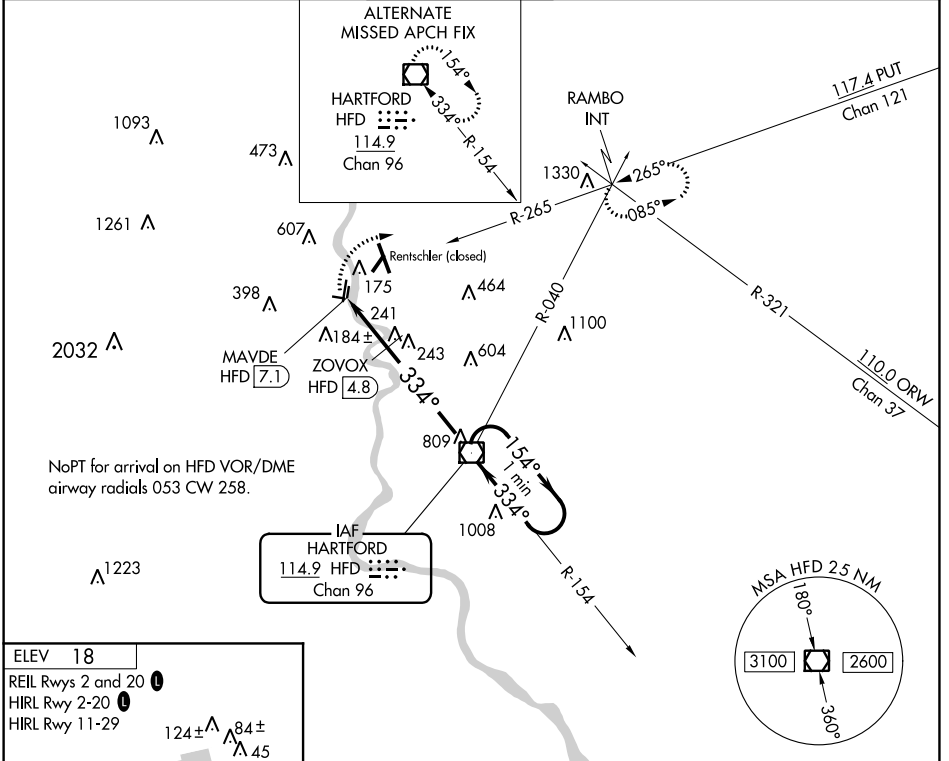
VOR/DME HFD 114.9 Chan 96	APP CRS 334°	Rwy Idg TDZE Apt Elev 18	N/A N/A 18
---	------------------------	---------------------------------------	------------------

VOR-A
HARTFORD-BRAINARD (HFD)

▼ Helicopter visibility reduction below 1 SM NA. When Rwy 2 VGSJ inop, Circling to Rwy 2 NA at night. Circling to Rwy 11 and 29 NA at night. When Rwy 20 VGSJ inop, Circling to Rwy 20 NA at night.

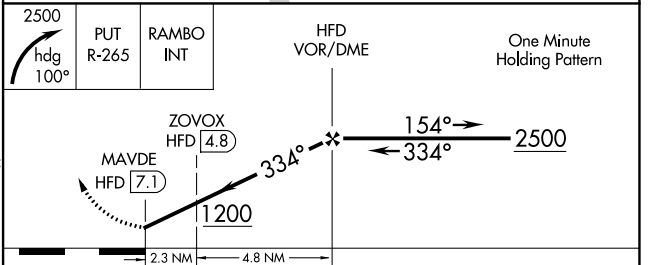
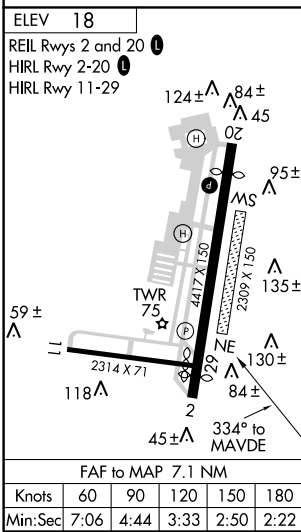
▲ MISSED APPROACH: Climbing right turn to 2500 on heading 100° and PUT VOR/DME R-265 to RAMBO INT and hold.

ATIS 126.45	YANKEE APP CON 127.8 269.325	BRAINARD TOWER ★ 119.6 (CTAF) 0 248.2	GND CON 121.6	CLNC DEL 121.6	UNICOM 122.95
-----------------------	--	---	-------------------------	--------------------------	-------------------------



NE-1, 21 MAY 2020 to 18 JUN 2020

NE-1, 21 MAY 2020 to 18 JUN 2020



CATEGORY	A	B	C	D
CIRCLING	1200-1¼ 1182 (1200-1¼)	1200-1½ 1182 (1200-1½)	1200-3	1182 (1200-3)
ZOVOX FIX MINIMUMS (DME REQUIRED)				
CIRCLING	580-1	562 (600-1)	900-2¾ 882 (900-2¾)	920-3 902 (1000-3)