

APP CRS	Rwy Idg	<b>8000</b>
<b>224°</b>	TDZE	<b>937</b>
	Apt Elev	<b>955</b>

# RNAV (GPS) RWY 23

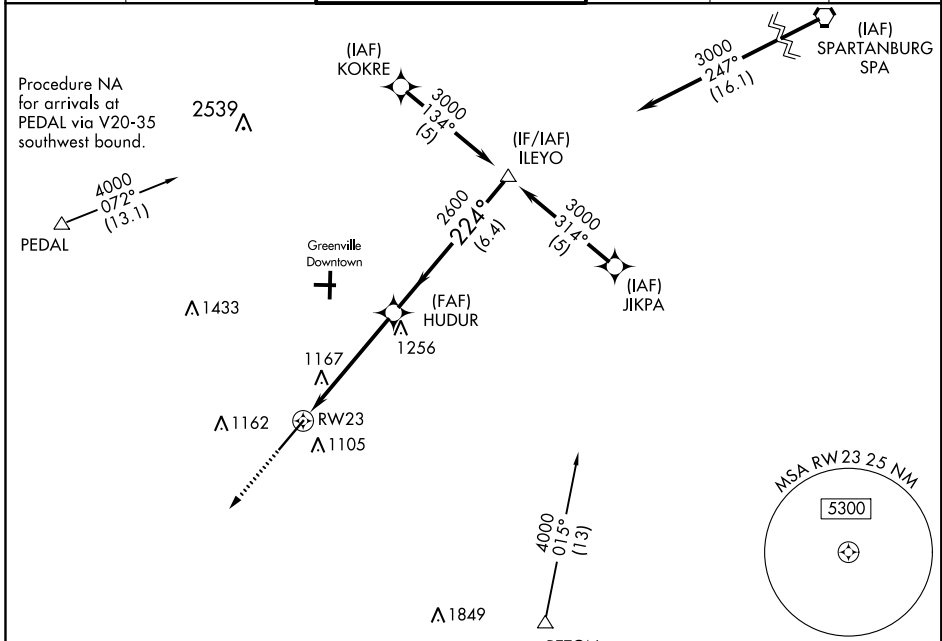
DONALDSON FIELD (GYH)

**▼** If local altimeter setting not received, use Greer altimeter setting and increase all MDAs 40 feet. VDP NA when using Greer altimeter setting. Helicopter visibility reduction below 3/4 statute mile NA. DME/DME RNP-0.3 NA.

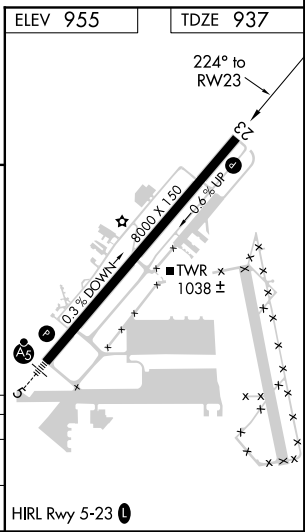
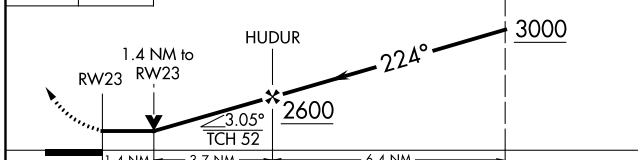
**▲** NA

**MISSED APPROACH:** Climb to 3000 direct NINYI and hold.

AWOS-3 <b>127.325</b>	GREER APP CON ★ <b>118.8 270.275</b>	<b>DONALDSON TOWER ★</b> <b>133.325 (CTAF) 0 269.25</b>	GND CON <b>121.4</b>	CLNC DEL <b>121.4</b>	UNICOM <b>122.7</b>
--------------------------	---	--	-------------------------	--------------------------	------------------------



3000 NINYI VGS1 and descent angles not coincident (VGS1 Angle 4.14/TCH 95). Procedure Turn NA



CATEGORY	A	B	C	D
LNVA MDA	1420-1	483 (500-1)	1420-1½ 483 (500-1½)	1420-1½ 483 (500-1½)
CIRCLING	1420-1	465 (500-1)	1480-1½ 525 (600-1½)	1520-2 565 (600-2)

SE-2, 21 MAY 2020 to 18 JUN 2020

SE-2, 21 MAY 2020 to 18 JUN 2020