

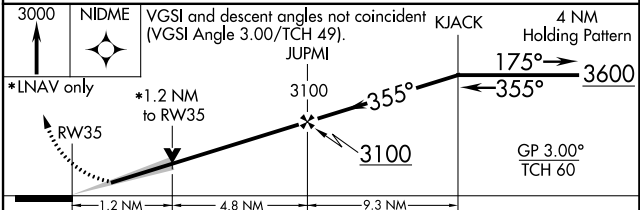
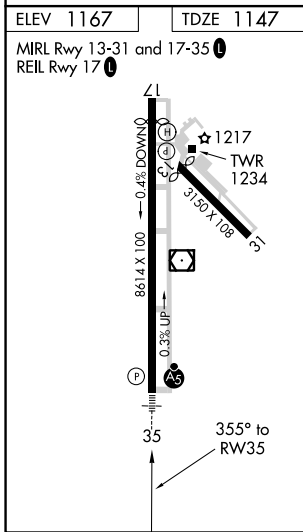
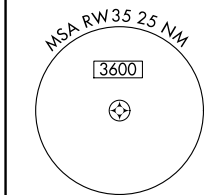
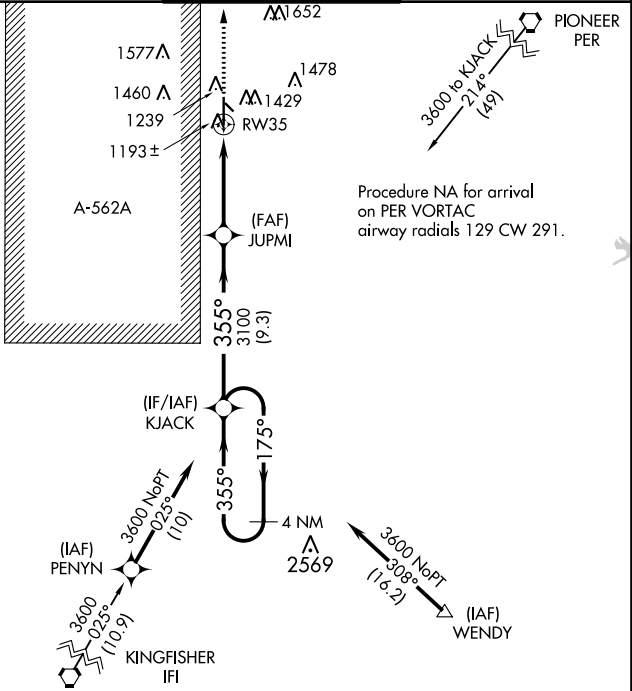
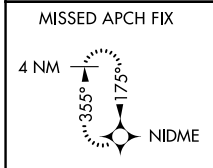
WAAS CH <b>97413</b> <b>W35A</b>	APP CRS <b>355°</b>	Rwy Idg <b>8614</b> TDZE <b>1147</b> Apt Elev <b>1167</b>
--	------------------------	---

# RNAV (GPS) RWY 35

ENID WOODRING RGNL (WDG)

<p>For uncompensated Baro-VNAV systems, LNAV/VNAV NA below -17°C (2°F) or above 54°C (130°F). Circling Rwy 13 NA at night. DME/DME RNP-0.3 NA. For inop ALS, increase LPV Cat E visibility to 3/4 SM, increase LNAV/VNAV all Cats visibility to 3/4 SM, increase LNAV Cat E visibility to 1/4 SM.</p>	MALSR 	MISSED APPROACH: Climb to 3000 direct NIDME and hold.

AWOS-3 <b>120.625</b>	VANCE APP CON ★ <b>121.3 346.325</b>	WOODRING TOWER ★ <b>118.9 (CTAF) 0 257.95</b>	GND CON <b>121.925</b>
--------------------------	---	--	---------------------------



CATEGORY	A	B	C	D	E
LPV DA		1347-1/2	200 (200-1/2)		
LNAV/VNAV DA		1397-1/2	250 (300-1/2)		
LNAV MDA	1580-1/2	433 (500-1/2)	1580-3/4	433 (500-3/4)	
<input checked="" type="checkbox"/> CIRCLING	1760-1	593 (600-1)	1820-1 3/4 653 (700-1 3/4)	1880-2 1/4 713 (800-2 1/4)	2000-3 833 (900-3)

SC-1, 21 MAY 2020 to 18 JUN 2020

SC-1, 21 MAY 2020 to 18 JUN 2020