

WAAS CH <b>50213</b> <b>W17A</b>	APP CRS <b>175°</b>	Rwy Idg <b>8003</b> TDZE <b>1165</b> Apt Elev <b>1167</b>
--	------------------------	---

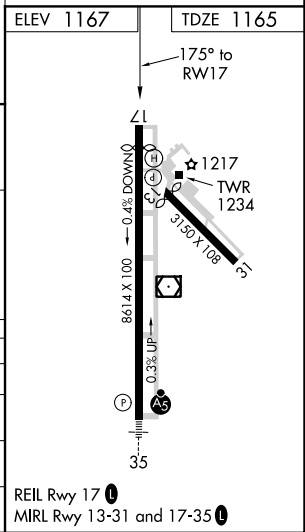
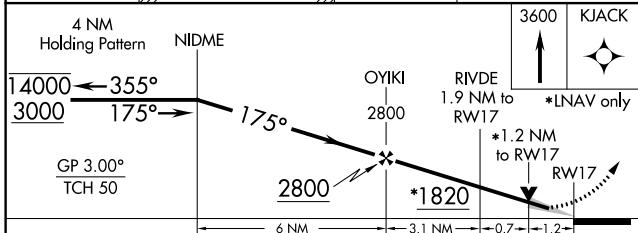
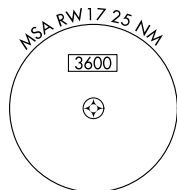
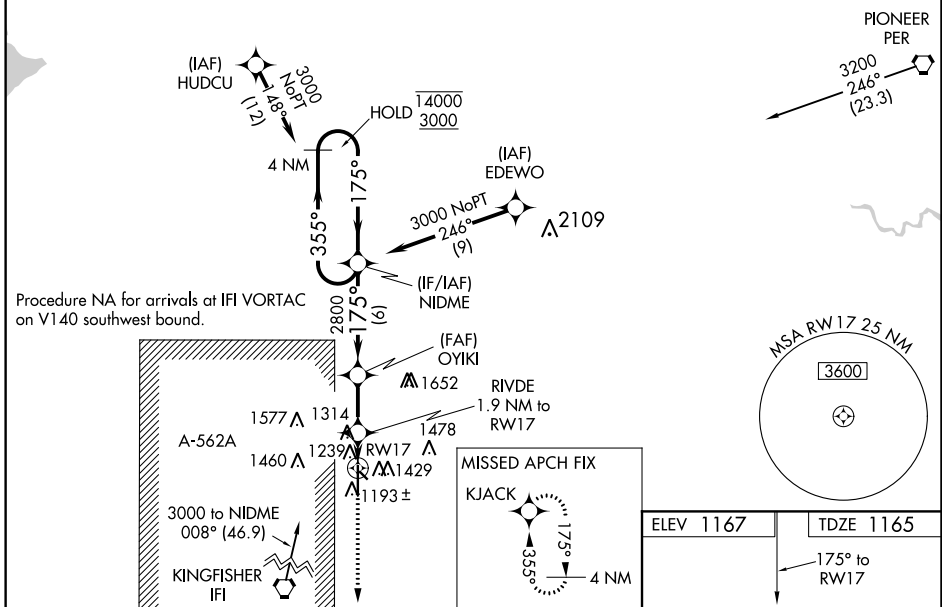
# RNAV (GPS) RWY 17

ENID WOODRING RGNL (WDG)

RNP APCH.		MISSED APPROACH: Climb to 3600 direct KJACK and hold.	
	Circling Rwy 13 NA at night. For uncompensated Baro-VNAV systems, LNAV/VNAV NA below -17°C or above 54°C.		

AWOS-3 <b>120.625</b>	VANCE APP CON * <b>121.3 346.325</b>	WOODRING TOWER * <b>118.9 (CTAF) 0 257.95</b>	GND CON <b>121.925</b>
--------------------------	---	--	---------------------------

Procedure NA for arrival on PER VORTAC  
airway radials 173 CW 335.



CATEGORY	A	B	C	D	E
LPV DA	1415-3/4		250 (300-3/4)		
LNAV/VNAV DA	1415-3/4		250 (300-3/4)		1415-5/8 250 (300-5/8)
LNAV MDA	1580-1 415 (500-1)		1580-1 1/8 415 (500-1 1/8)		
CIRCLING	1760-1 593 (600-1)		1820-1 1/4 653 (700-1 1/4)	1880-2 1/4 713 (800-2 1/4)	2000-3 833 (900-3)

SC-1, 21 MAY 2020 to 18 JUN 2020

SC-1, 21 MAY 2020 to 18 JUN 2020