

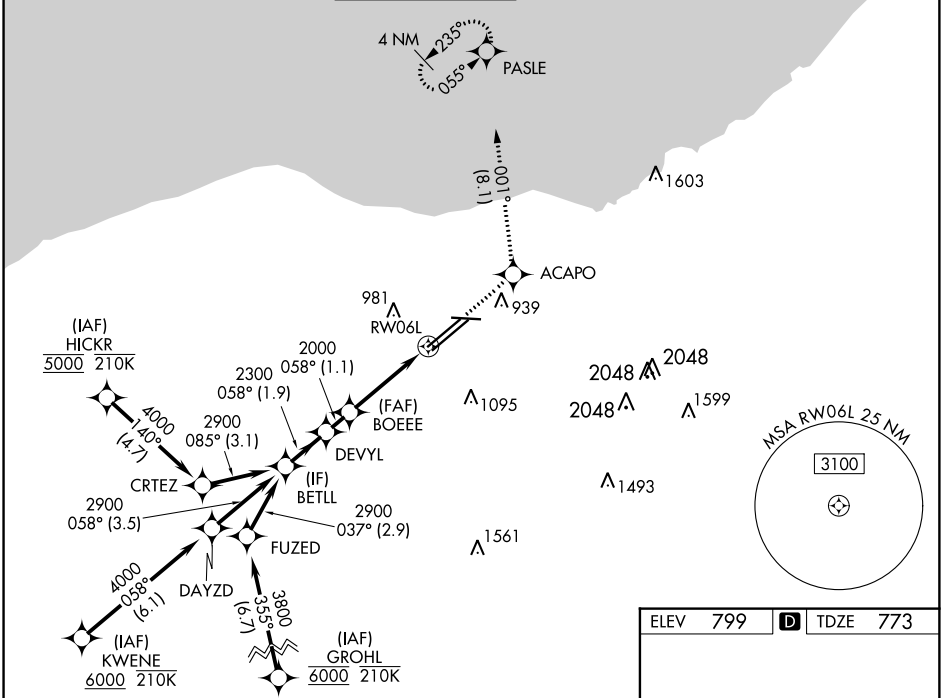
WAAS CH 56204 W06A	APP CRS 058°	Rwy Idg 9000 TDZE 773 Apt Elev 799
----------------------------------------	------------------------	---------------------------------------------------------------

RNAV (GPS) Y RWY 6L

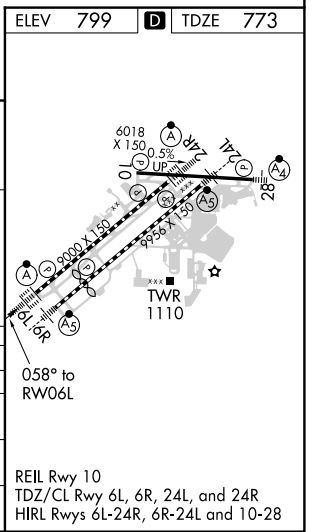
CLEVELAND-HOPKINS INTL (CLE)

RNP APCH.	ALSF-2 	MISSED APPROACH: Climb to 3000 direct ACAPO and on track 001° to PASLE and hold.
<p>▼ For uncompensated Baro-VNAV systems, LNAV/VNAV NA below -18°C (0°F) or above 54°C (130°F). Circling Rwy 10 NA at night. For inop ALS, increase LNAV/VNAV all Cats visibility to RVR 5500 and increase LNAV Cats C/D visibility to 1½ SM.</p>		

D-ATIS ARR 127.85 DEP 132.375	CLEVELAND APP CON 124.0 346.325	CLEVELAND TOWER 124.5 273.45	GND CON 121.7 273.45	CLNC DEL 125.05 273.45	CPDLC
---------------------------------------------------	-------------------------------------------	----------------------------------------	--------------------------------	----------------------------------	-------



VGSi and RNAV glidepath not coincident (VGSi Angle 3.00/TCH 69).		3000	ACAPO	PASLE
BETLL		↑		tr 001°
2900		*LNAV only.		
058°		*1.3 NM to RW06L		
DEVYL		RW06L		
2300		BOEEE		
2000		2000		
GP 3.00°		1.9 NM		
TCH 55		1.1 NM		
		2.4 NM		
		1.3 NM		
CATEGORY	A	B	C	D
LPV DA	973/18		200 (200-½)	
LNAV/VNAV DA	1120/30		347 (400-¾)	
LNAV MDA	1260/24 487 (500-½)		1260/50 487 (500-1)	
C CIRCLING	1420-1 621 (700-1)		1420-1¾ 621 (700-1¾) 1420-2 621 (700-2)	



EC-2, 21 MAY 2020 to 18 JUN 2020

EC-2, 21 MAY 2020 to 18 JUN 2020