

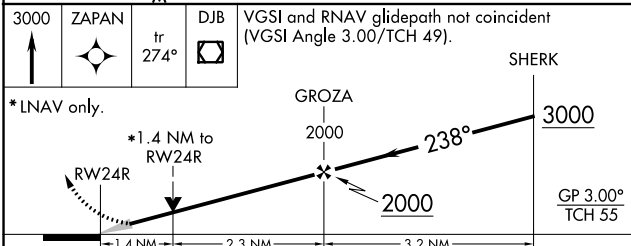
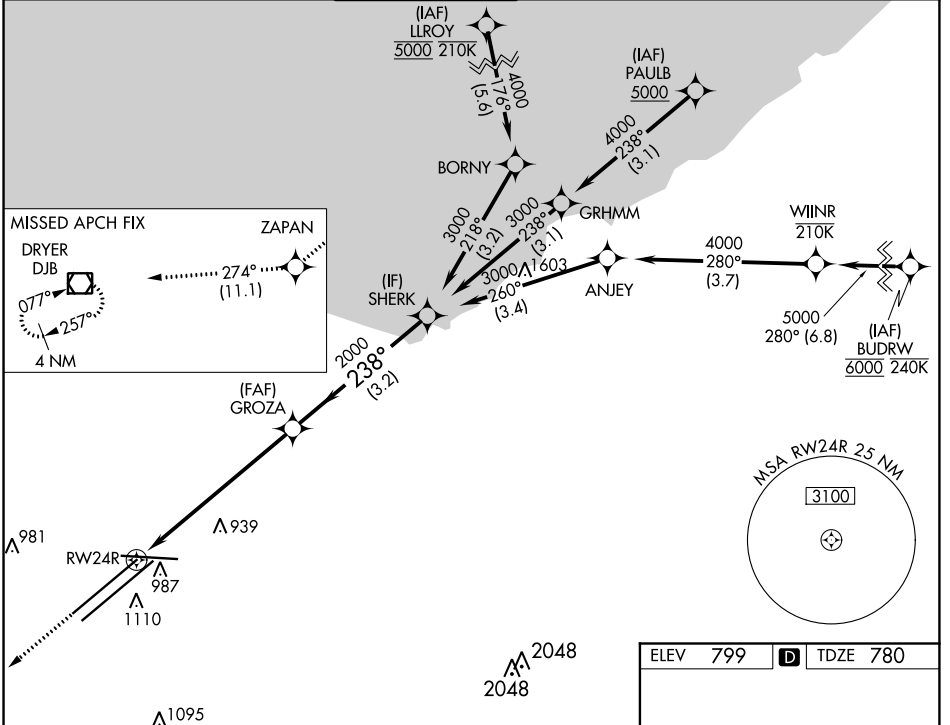
WAAS CH 60904 W24A	APP CRS 238°	Rwy Idg TDZE 780 Apt Elev 799	9000 780 799
--	------------------------	---	---

RNAV (GPS) Y RWY 24R

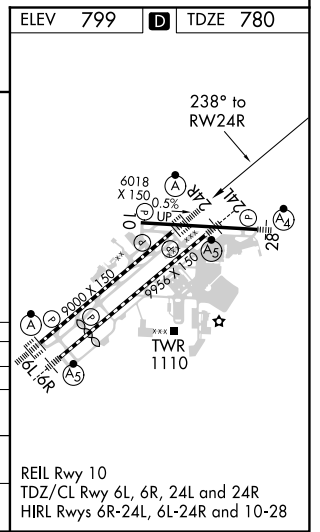
CLEVELAND-HOPKINS INTL (CLE)

RNP APCH.	ALSF-2	MISSED APPROACH: Climb to 3000 direct ZAPAN and on track 274° to DJB VOR/DME and hold.
Circling Rwy 10 NA at night. For uncompensated Baro-VNAV systems, LNAV/VNAV NA below -19°C or above 54°C.		

D-ATIS ARR 127.85 DEP 132.375	CLEVELAND APP CON 124.0 346.325	CLEVELAND TOWER 124.5 273.45	GND CON 121.7 273.45	CLNC DEL 125.05 273.45	CPDLC
---	---	--	--------------------------------	----------------------------------	-------



CATEGORY	A	B	C	D
LPV DA	980/18		200 (200-½)	
LNAV/VNAV DA	1168/35		388 (400-⅝)	
LNAV MDA	1240/24	460 (500-½)	1240/45	460 (500-⅝)
CIRCLING	1420-1 621 (700-1)		1420-1¾ 621 (700-1¾)	1420-2 621 (700-2)



EC-2, 21 MAY 2020 to 18 JUN 2020

EC-2, 21 MAY 2020 to 18 JUN 2020