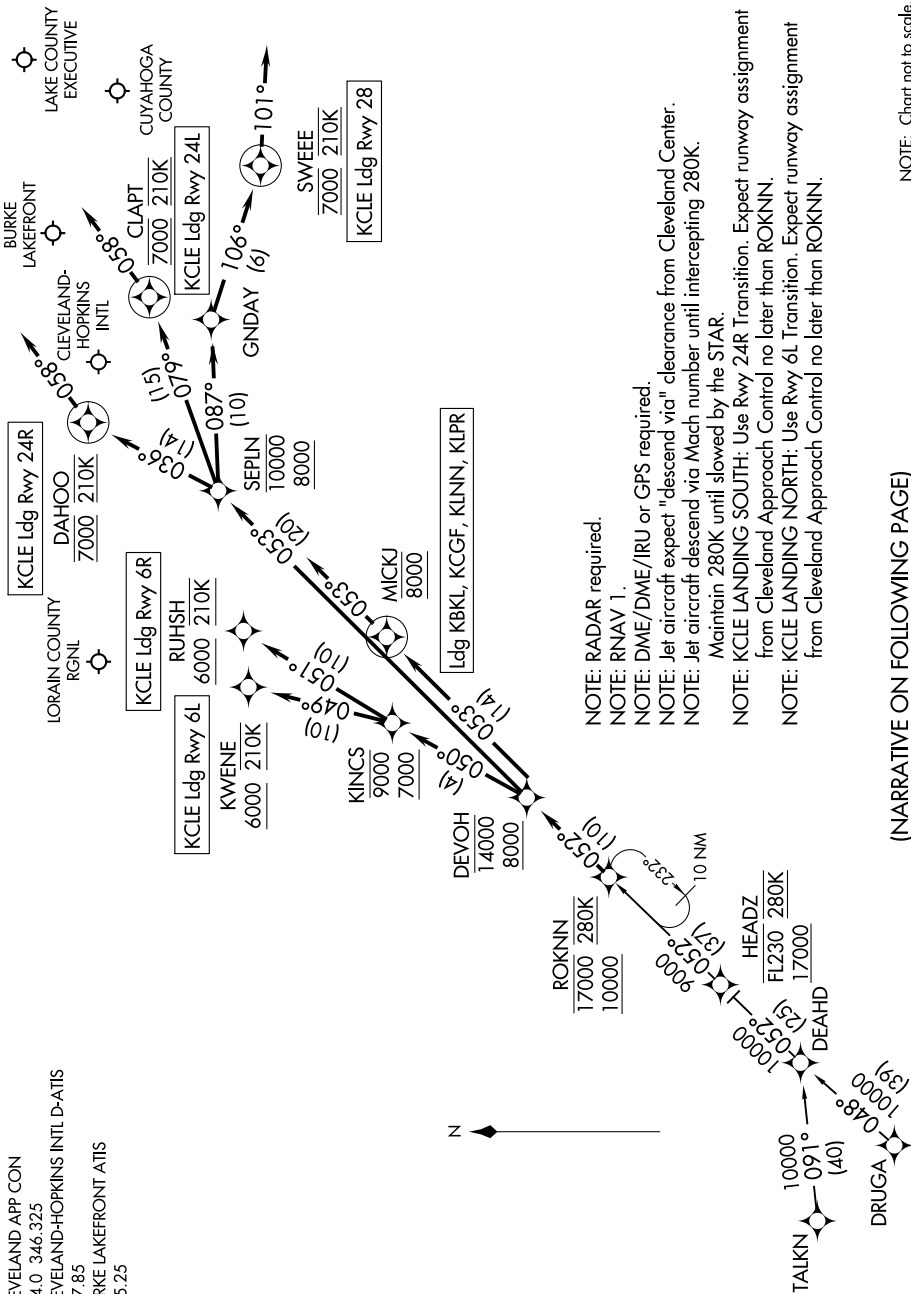


ROKNN THREE ARRIVAL (RNAV)

CLEVELAND, OHIO

EC-2, 21 MAY 2020 to 18 JUN 2020

CLEVELAND APP CON
124.0 346.325
CLEVELAND-HOPKINS INTL D-ATIS
127.85
BURKE LAKEFRONT ATIS
125.25



- NOTE: RADAR required.
- NOTE: RNAV 1.
- NOTE: DME/DME/IRU or GFS required.
- NOTE: Jet aircraft expect "descend via" clearance from Cleveland Center.
- NOTE: Jet aircraft descend via Mach number until intercepting 280K.
- Maintain 280K until slowed by the STAR.
- NOTE: KCLE LANDING SOUTH: Use Rwy 24R Transition. Expect runway assignment from Cleveland Approach Control no later than ROKNN.
- NOTE: KCLE LANDING NORTH: Use Rwy 6L Transition. Expect runway assignment from Cleveland Approach Control no later than ROKNN.

NOTE: Chart not to scale.

(NARRATIVE ON FOLLOWING PAGE)

EC-2, 21 MAY 2020 to 18 JUN 2020

ROKNN THREE ARRIVAL (RNAV)

CLEVELAND, OHIO