

LOC/DME I-XPX <b>110.7</b> Chan <b>44</b>	APP CRS <b>281°</b>	Rwy Idg TDZE <b>799</b> Apt Elev <b>799</b>	<b>6018</b>
---	------------------------	---	-------------

# ILS or LOC RWY 28

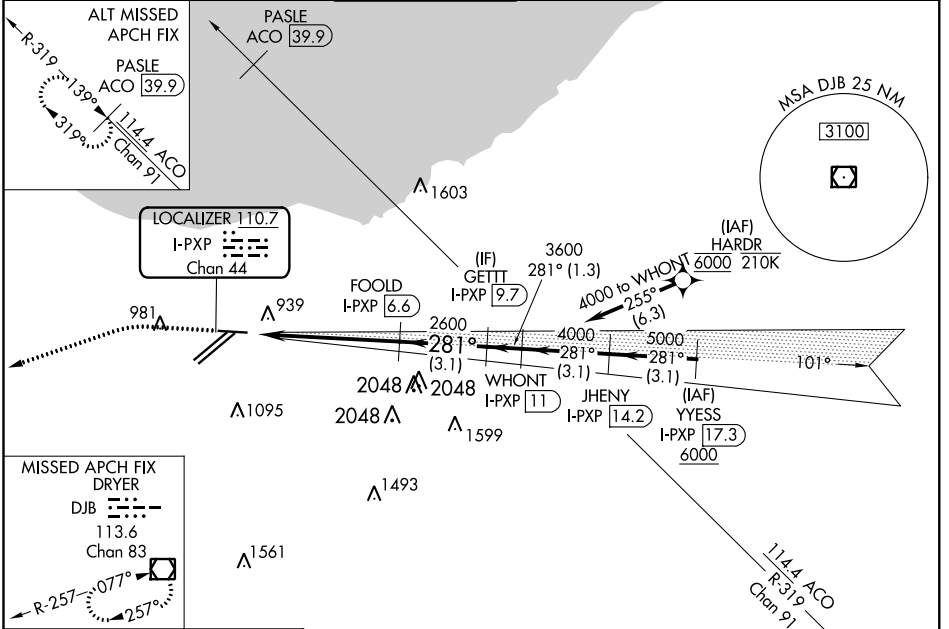
CLEVELAND-HOPKINS INTL (CLE)

RNAV 1. From HARDR: RNAV 1-DME/DME/IRU or GPS required for procedure entry.  
Aircraft not DME/DME/IRU or GPS equipped - RADAR required for procedure entry.  
DME required.

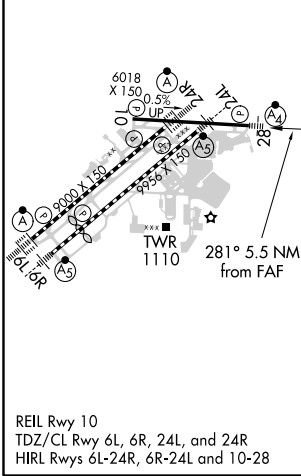
MALSF MISSED APPROACH: Climb to 1400 then climbing left turn to 3000 direct DJB VOR/DME and hold.

Circling Rwy 10 NA at night. Inop table does not apply to S-ILS 28.

D-ATIS ARR <b>127.85</b> DEP <b>132.375</b>	CLEVELAND APP CON <b>124.0 346.325</b>	CLEVELAND TOWER <b>124.5 273.45</b>	GND CON <b>121.7 273.45</b>	CLNC DEL <b>125.05 273.45</b>	CPDLC
---	---	--	--------------------------------	----------------------------------	-------



ELEV <b>799</b>	<b>D</b>	TDZE <b>799</b>
-----------------	----------	-----------------



1400	3000	DJB	
*LOC only.			
I-XPX 1.1	*I-XPX 2.6	FOOLD I-XPX 6.6	GETTT I-XPX 9.7
2600		281°	3600
-1.6 NM		4 NM	3.1 NM
GS 3.00° TCH 46			