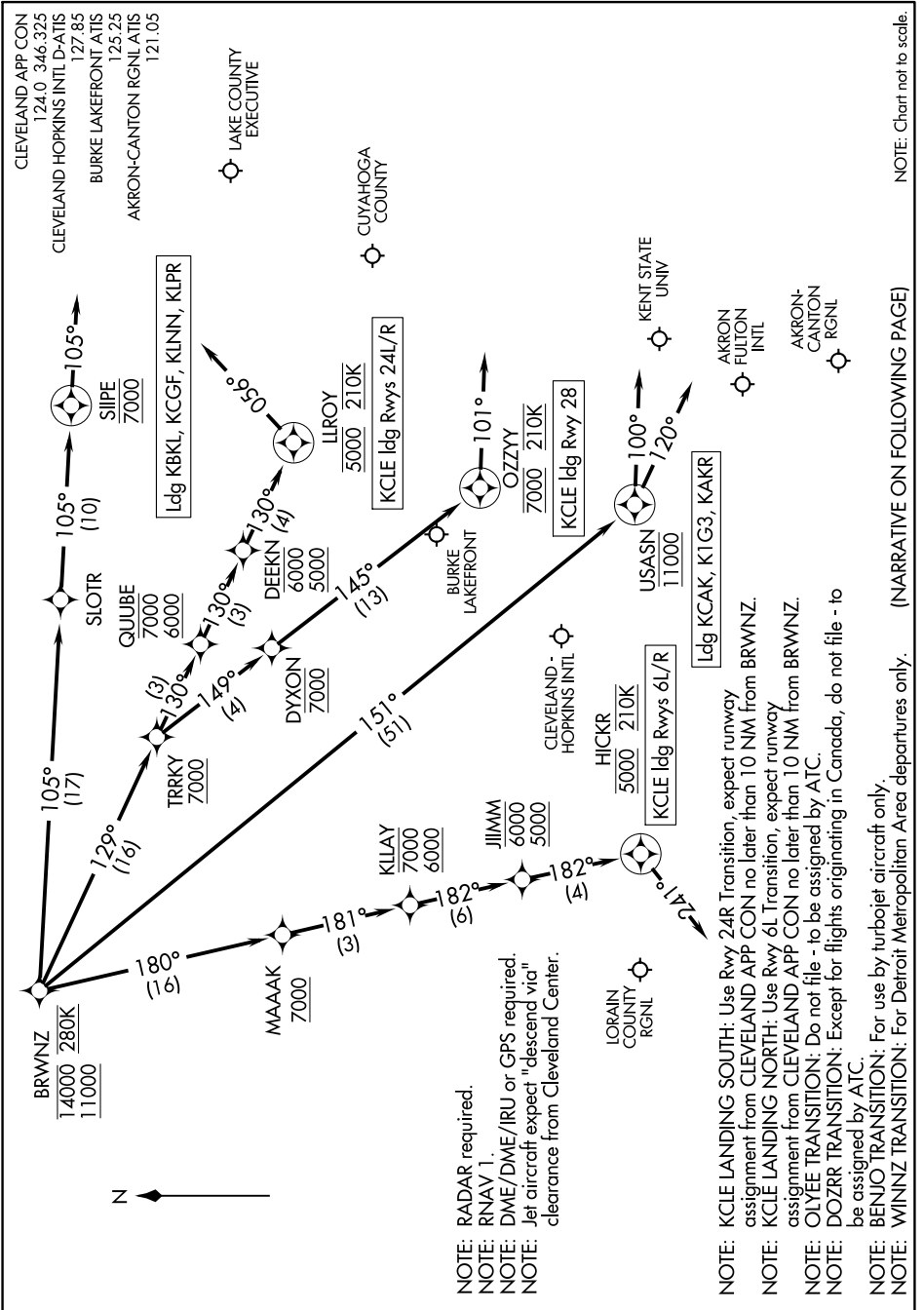


BRWNZ THREE ARRIVAL (RNAV) Arrival Routes

CLEVELAND, OHIO

EC-2, 21 MAY 2020 to 18 JUN 2020



NOTE: RADAR required.
 NOTE: RNAV 1.
 NOTE: DME/DME/IRU or GPS required.
 NOTE: Jet aircraft expect "descend via" clearance from Cleveland Center.

NOTE: KCLE LANDING SOUTH: Use Rwy 24R Transition, expect runway assignment from CLEVELAND APP CON no later than 10 NM from BRWNZ.
 NOTE: KCLE LANDING NORTH: Use Rwy 6L Transition, expect runway assignment from CLEVELAND APP CON no later than 10 NM from BRWNZ.
 NOTE: OLYEE TRANSITION: Do not file - to be assigned by ATC.
 NOTE: DOZRR TRANSITION: Except for flights originating in Canada, do not file - to be assigned by ATC.
 NOTE: BENJO TRANSITION: For use by turboprop aircraft only.
 NOTE: WINNZ TRANSITION: For Detroit Metropolitan Area departures only.

(NARRATIVE ON FOLLOWING PAGE)

NOTE: Chart not to scale.

EC-2, 21 MAY 2020 to 18 JUN 2020

BRWNZ THREE ARRIVAL (RNAV) Arrival Routes

CLEVELAND, OHIO