

| | | | |
|--|------------------------|-----------------------------|---|
| WAAS CH 45626 W26A | APP CRS 246° | Rwy Idg TDZE Apt Elev | 6543 396 400 |
|--|------------------------|-----------------------------|---|

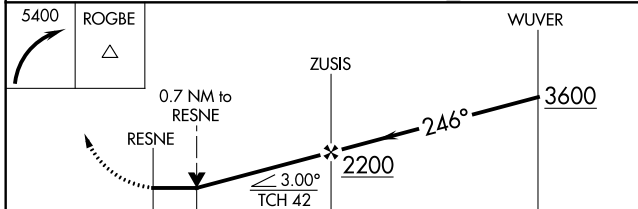
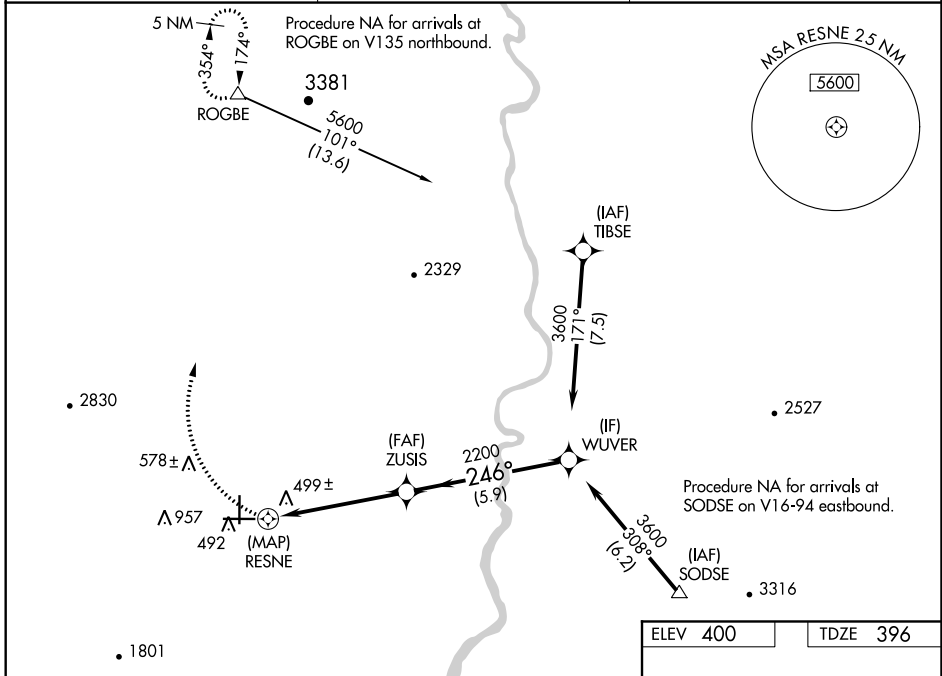
RNAV (GPS) RWY 26

BLYTHE (BLH)

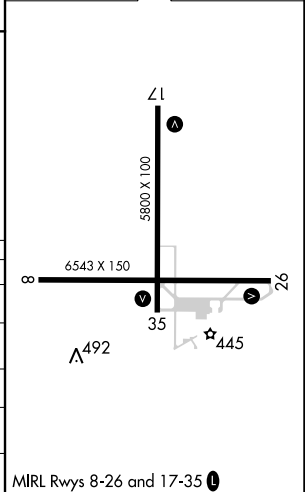
⚠ When local altimeter setting not received, procedure NA.
⚠ DME/DME RNP-0.3 NA. Helicopter visibility reduction below 3/4 SM NA.
 #Missed approach requires a minimum climb of 375 feet per NM to 3500.
 *Missed approach requires a minimum climb of 345 feet per NM to 3500.

MISSED APPROACH: Climbing right turn to 5400 direct ROGBE and hold, continue climb-in-hold to 5400.

| | | |
|------------------------|---|---------------------------------|
| ASOS 120.175 | LOS ANGELES CENTER 128.15 285.6 | UNICOM 122.8 (CTAF) 0 |
|------------------------|---|---------------------------------|



| | |
|----------|----------|
| ELEV 400 | TDZE 396 |
|----------|----------|



| CATEGORY | A | B | C | D |
|------------|---------------------------------|---------------------------------|-----------|-----------------|
| *LP MDA | 800-1 | 404 (400-1) | 800-1 1/8 | 404 (400-1 1/8) |
| LP MDA | 1940-1 1/4 1544 (1600-1 1/4) | 1940-1 1/2 1544 (1600-1 1/2) | 1940-3 | 1544 (1600-3) |
| # LNAV MDA | 800-1 | 404 (400-1) | 800-1 1/8 | 404 (400-1 1/8) |
| LNAV MDA | 2060-1 1/4 1664 (1700-1 1/4) | 2060-1 1/2 1664 (1700-1 1/2) | 2060-3 | 1664 (1700-3) |
| CIRCLING | 2060-1 1/4 1660 (1700-1 1/4) | 2060-1 1/2 1660 (1700-1 1/2) | 2060-3 | 1660 (1700-3) |

SW-3, 21 MAY 2020 to 18 JUN 2020

SW-3, 21 MAY 2020 to 18 JUN 2020

MIRL Rwy 8-26 and 17-35 0