

WAAS CH <b>61220</b> <b>W05A</b>	APP CRS <b>047°</b>	Rwy Idg <b>10004</b> TDZE <b>952</b> Apt Elev <b>952</b>
--	------------------------	--

# RNAV (GPS) RWY 5L

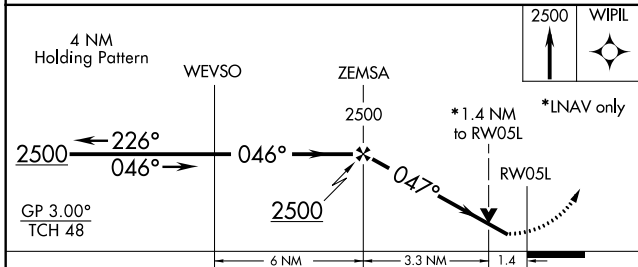
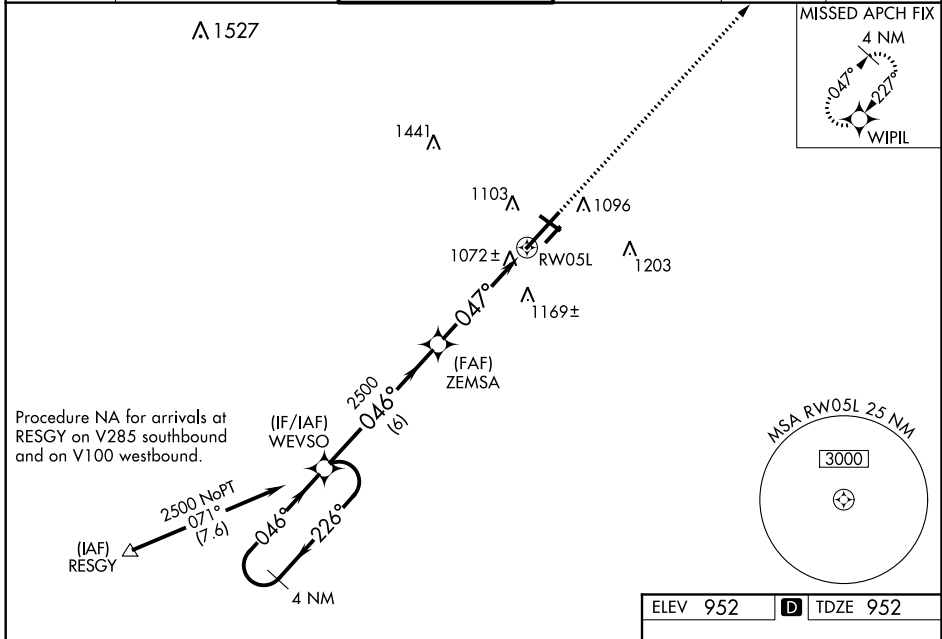
W K KELLOGG (BTL)

RNP APCH

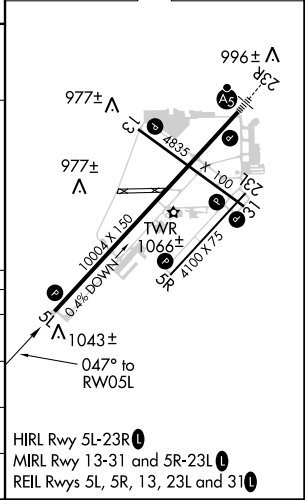
For uncompensated Baro-VNAV systems, LNAV/VNAV NA below -16°C or above 37°C. Rwy 5L helicopter visibility reduction below 3/4 SM NA. When local altimeter setting not received, use Grand Rapids altimeter setting: increase all DA 106 feet and all LPV and LNAV/VNAV visibility 3/8 mile; increase all MDA 120 feet, LNAV Cats C ASR and D visibility 3/8 mile and Circling Cats C and D visibility 1/4 mile. VDP and Baro-VNAV NA when using Grand Rapids altimeter setting. Circling NA to Rwys 5R/23L. Circling Rwy 31 NA at night. Circling NA to Rwys 5R and 23L.

MISSED APPROACH:  
Climb to 2500 direct  
WIPIL and hold.

ATIS <b>128.325</b>	GREAT LAKES APP CON * <b>119.2 239.25</b>	BATTLE CREEK TOWER * <b>126.825</b>	GND CON <b>121.7</b>	UNICOM <b>122.95</b>	CTAF <b>126.825</b>
------------------------	--	--	-------------------------	-------------------------	------------------------



ELEV 952	D TDZE 952
----------	------------



CATEGORY	A	B	C	D
LPV DA		1317-1 1/4	365 (400-1 1/4)	
LNAV/VNAV DA		1253-1	301 (400-1)	
LNAV MDA	1440-1	488 (500-1)	1440-1 3/8	488 (500-1 3/8)
CIRCLING	1440-1	488 (500-1)	1480-1 1/2	1520-2
			528 (600-1 1/2)	568 (600-2)

EC-1, 21 MAY 2020 to 18 JUN 2020

EC-1, 21 MAY 2020 to 18 JUN 2020