

WAAS CH <b>61040</b> <b>W12B</b>	APP CRS <b>121°</b>	Rwy Idg TDZE <b>488</b> Apt Elev <b>510</b>	<b>7700</b> <b>488</b> <b>510</b>
--	------------------------	---	---

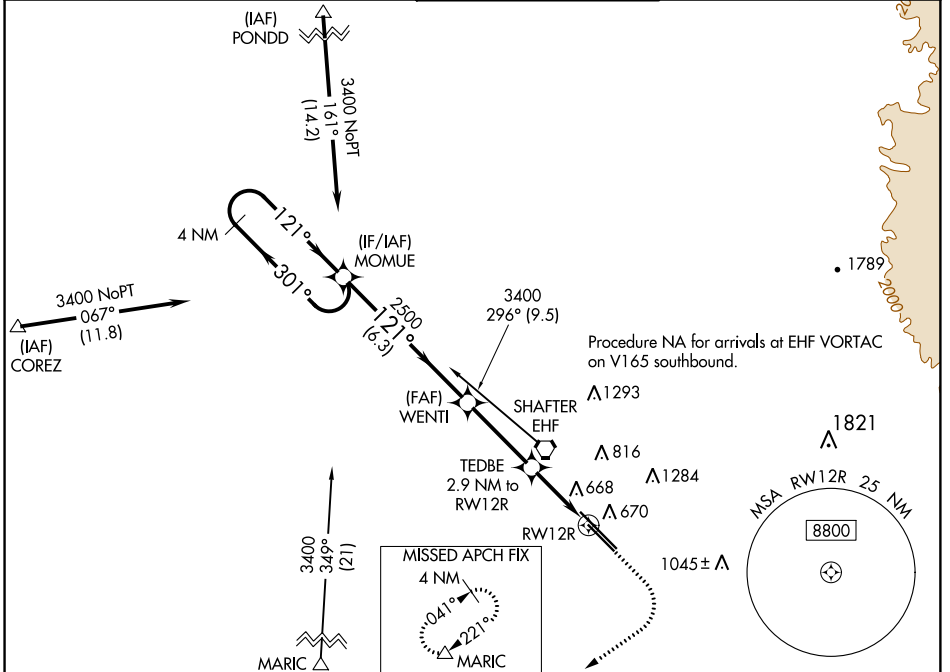
# RNAV (GPS) RWY 12R

MEADOWS FIELD (BFL)

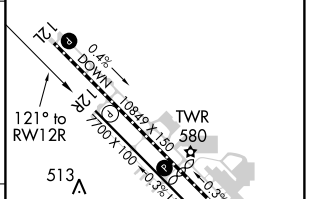
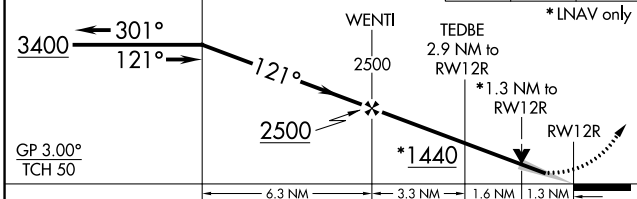
**▽** For uncompensated Baro-VNAV systems, LNAV/VNAV NA below -1°C (31°F) or above 54°C (130°F). Circling NA northeast of Rwy 12L-30R.  
DME/DME RNP-0.3 NA.

MISSED APPROACH: Climb to 1000 then climbing right turn to 3500 direct MARIC and hold.

ATIS <b>118.6</b>	BAKERSFIELD APP CON ★ <b>118.8 284.625</b> (SOUTH) <b>118.9 270.3</b> (NORTH)	BAKERSFIELD TOWER ★ <b>118.1</b> (CTAF) <b>257.8</b>	GND CON <b>121.7</b>	UNICOM <b>122.95</b>
----------------------	---	---	-------------------------	-------------------------



VGSI and RNAV glidepath not coincident (VGSI Angle 3.00/TCH 25).	1000	3500	MARIC	ELEV 510	TDZE 488
4 NM Holding Pattern MOMUE	↑	↪	△		



CATEGORY	A	B	C	D
LPV DA	738-3/4		250 (300-3/4)	
LNAV/VNAV DA	969-1 5/8		481 (500-1 5/8)	
LNAV MDA	920-1	432 (500-1)	920-1 1/4	432 (500-1 1/4)
<b>C</b> CIRCLING	960-1	450 (500-1)	960-1 1/2	1060-2 450 (500-1 1/2) 550 (600-2)

TDZ/CL Rwy 30R  
HIRL Rwy 12L-30R **①**  
MIRL Rwy 12R-30L **②**

SW-3, 21 MAY 2020 to 18 JUN 2020

SW-3, 21 MAY 2020 to 18 JUN 2020