

WAAS CH 90310 W12A	APP CRS 119°	Rwy Idg TDZE Apt Elev	5002 60 61
---------------------------------	------------------------	-----------------------------	---------------------------------------

RNAV (GPS) RWY 12

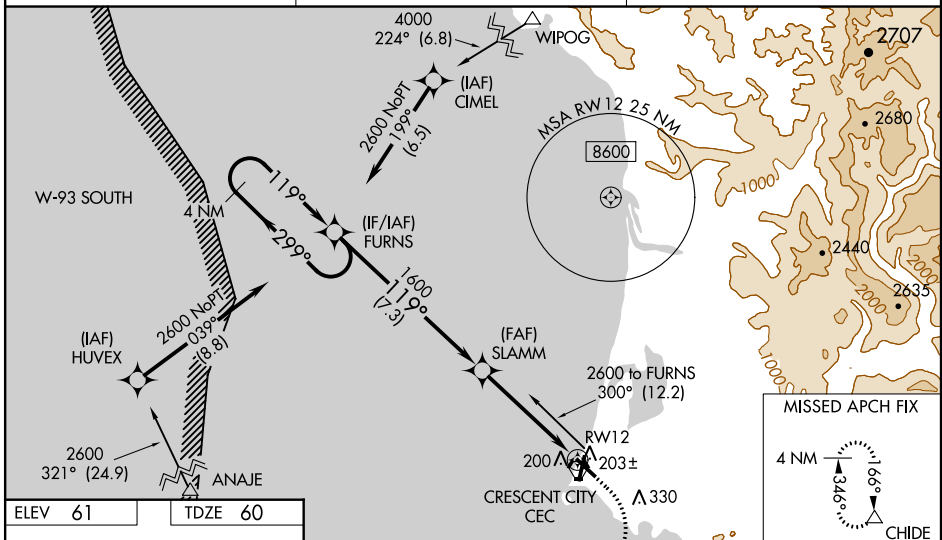
JACK MC NAMARA FIELD (C/C)

▽ Inop table does not apply to LPV all Cats. For uncompensated Baro-VNAV systems, LNAV/VNAV NA below 0°C (32°F) or above 54°C (130°F). DME/DME RNP-0.3 NA. When local altimeter setting not received, use Brookings altimeter setting and increase LPV DA to 407 feet, LNAV/VNAV DA to 484 feet and all MDA 100 feet; increase LPV all Cats visibility to ½ mile, LNAV/VNAV all Cats visibility to 1½ mile, LNAV Cat C/D to 1½ mile, and Circling Cat C to 2 miles, Cat D to 2½ miles. For inop MALS, increase LNAV/VNAV all Cats visibility to 1 mile and LNAV Cat A/B visibility to 1 mile, Cat C/D to 1½ mile. For inop MALS, when using Brookings altimeter setting, increase LPV all Cats visibility to 1½ mile, LNAV/VNAV all Cats visibility to 1½ mile, and LNAV Cat A/B to 1 mile, Cat C/D to 1½ mile. VDP and Baro-VNAV NA when using Brookings altimeter setting. Night landing: Rwy 18, 30 NA. Night landing: Rwy 36, operational VGSI required, remain on or above VGSI glidepath until threshold.

MALS

MISSED APPROACH:
Climb to 600 then climbing right turn to 3000 direct CHIDE and hold, continue climb-in-hold to 3000.

ASOS 119,925	SEATTLE CENTER 124.85 306.3	UNICOM 122.8 (CTAF) 0
------------------------	---------------------------------------	---------------------------------



ELEV 61 TDZE 60

HIRL Rwy 12-30
REIL Rwys 18, 30 and 36
MIRL Rwy 18-36

4 NM Holding Pattern FURNS	2600	119°	1600	119°	600	3000	CHIDE
GP 3.00° TCH 55	2600	119°	1600	119°	600	3000	CHIDE
	7.3 NM		3.6 NM		1.1 NM		
CATEGORY	A	B	C	D			
LPV DA		310-¾	250 (300-¾)				
LNAV/VNAV DA		387-¾	327 (400-¾)				
LNAV MDA	460-¾	400 (400-¾)	460-⅞	400 (400-⅞)			
CIRCLING	540-1	479 (500-1)	640-1½ 579 (600-1½)	640-2 579 (600-2)			

* LNAV only.

SW-2, 21 MAY 2020 to 18 JUN 2020

SW-2, 21 MAY 2020 to 18 JUN 2020